

# KIWI AUCTIONS

Presents an Absentee / Timed Auction of

## Antique Bottles, Collectables, Colonial & Studio Pottery

Auction Starts Friday 18<sup>th</sup> & Closes Sunday December 4<sup>th</sup> 2022



**KIWI AUCTIONS LTD**

106B Harpers Road, RD 2, Kaiapoi 7692, New Zealand

Telephone (NZ only) 0800 782 584

Telephone: (intl) +64 27 270 7410

Web [www.kiwiauctions.co.nz](http://www.kiwiauctions.co.nz)

Email: [info@kiwiauctions.co.nz](mailto:info@kiwiauctions.co.nz)



# KIWI AUCTIONS

Presents an Absentee / Timed Auction of

## Antique Bottles, Collectables, Colonial & Studio Pottery

Auction Starts Friday 18<sup>th</sup> &  
Closes Sunday December 4<sup>th</sup> 2022



## **General**

### **1. Definition**

In these terms of business:

Kiwi Auctions Limited is referred to as 'KA'

The KA representative conducting the auction is referred to as the 'auctioneer'.

### **2. Attribution and Condition of Lots**

We make every effort to ensure the accuracy of any statement as to authorship, attribution, origin, date, age, provenance, and condition of any lot, whether or not

Any statement made orally or in the catalogue is an opinion given after careful consideration and research.

Written condition reports are available upon request for buyers unable to attend viewing in person.

When bidding, you acknowledge that you are fully satisfied as to the attribution and condition of the lot.

### **3. Third Party Liability**

Every person on KA premises before, during or after a sale shall be deemed to be there at their own risk and shall have no claim against KA in respect of any injury they may sustain or any accident which may occur.

### **4. Disputes**

Any dispute not covered in these terms of business will be settled at the sole discretion of KA.

### **5. The Seller**

a. KA sell as agents for the seller (Vendor).

b. KA reserve the right to fix a reserve price for any lot.

c. Payment we aim to pay you no later than 28 working days after the auction.

We do not pay interest on the period between your buyer's payment and your receipt of the payment.

We act as agents and cannot be held responsible if your buyer does not pay. We cannot pay you until we have received cleared funds.

### **6. The Buyer**

The highest bidder acknowledged as such by the auctioneer will be the buyer. If any dispute arises, the auctioneer has absolute discretion to settle the matter.

The auctioneer rules the bidding and bids cannot be retracted. The auctioneer reserves the right to refuse any bid.

The successful bidder, whether bidding for himself or for a third party, is entirely responsible for paying for the lots they have bought in accordance with KA terms of business.

The auctioneer reserves the right to bid on behalf of the vendors for any lot and to withdraw, consolidate or divide any lot or lots.

### **7. Registration**

Prospective buyers need to register with us, giving their full name, address, contact telephone number(s) and email address. First time buyers will be required to provide proof of identity (i.e., driving licence/passport), a valid debit or credit card. Upon receipt of the above a buyer number will be issued, which is only valid for the current sale. This card may be used to indicate your bids to the Auctioneer during the sale. If successful, the bidder must ensure that their number can be seen by the Auctioneer and that it is their number that is called out. Should there be any doubts as to price or buyer, please draw the Auctioneer's attention to it immediately.

### **8. Buyer's Premium**

You will pay a premium of 15% plus GST on the hammer price of your purchase on each lot.

GST is calculated at the rates that apply on the day of the auction.

### **9. Payment**

Buyers must pay in full before their purchases can be released to them.

Payment Methods

We accept payment by:

- Cash
- Debit card
- PayPal Please note a charge of 5% needs to be added to PayPal payments.
- Credit card Visa & Mastercard only, not American Express or Diners Club.
- Bank transfer to:

**Kiwi Auctions Ltd**

Account no. 03 0823 0044485 00

Account name Kiwi Auctions Ltd

### **10. Internet Bidding**

Live online bidding at selected auctions is now available, please see website for details

### **11. Ownership of Purchases**

Ownership of lot(s) purchased will not pass to the buyer until they have paid KA in full, and KA has applied the payment to the lot.

### **12. Transfer of Risk**

Each lot is the buyer's sole responsibility from the fall of the hammer and is sold with all faults and imperfections.

KA is not responsible for the correct description, genuineness or authenticity of any lot and makes no warranty whatsoever.

The buyer is deemed to have inspected each lot and satisfied himself as to its condition.

Written condition reports are available upon request for buyers unable to attend viewing in person. We are unable to offer comprehensive condition reports on low value lots comprising multiple items. Refunds cannot be given with regards to condition on items purchased by buyers who have viewed their purchased lots. Refunds will only be considered if a written condition report has been issued and the description of condition is not as described.

### **13. Commission Absentee Bids**

If instructed, KA will execute bids and advise prospective buyers.

Buyers who cannot come to a sale may leave their bid with our staff after viewing or make their bid in advance by telephone or email. Such bids are placed at the buyer's own risk.

Bids must be made at least one hour before the sale starts, and we advise buyers to make bids within one hour of the close of the view day.

When making bids, buyers must provide:

- Their full name
- Address
- Email address
- Contact telephone numbers
- The number of the lot they wish to buy
- Their maximum bid amount – excluding commission which will be added to the invoice afterwards.

We will ensure that lots are bought as cheaply as possible depending on the bids made and other reserves. If identical bids are placed, the person who bid first will take precedence.

### **14. Telephone Bids**

Requests for telephone bidding must be registered one hour prior to the close of the view day. Lines are booked on a first come first served basis.

Full name, address and telephone numbers will be required together with proof of identity and address. Bank and credit/debit card details are also necessary.

### **15. Absentee Bidding**

Whilst every effort is made to execute absentee bidding, KA cannot be held responsible for any default or neglect in connection with this service.

All such arrangements are made entirely at the prospective buyer's risk.





**1. Codd 766**, 1.6oz, bulb shoulder, C/D rated, Grogan's Greymouth, W B & S Ltd 2500 to base, machine made, excellent, 9.5/10 Plus Codd 760, 6oz, 2 tear, C rated, P Grogan Greymouth, Cannington Shaw maker, minor marks and wear, Very Good 8/10 Plus Codd 1401, 10oz, 2 tear, B/C rated, James Paul New Plymouth, Alexander maker, several fisheyes/small bruises, light internal haze, Very Good 8/10, Plus Codd 1400 6oz, 2 tear, C rated, James Paul New Plymouth, Alexander maker, fisheyes above word James, light wear, Very Good 7.5/10 (4)



**7. Codd 1595**, 10oz, 2 tear, D rated, A G Saunders Wellington & Petone, Barnard & Sons maker, tiny bruises on lip, fisheyes, light wear, dull patch near base, Good 7/10, Plus Codd 561, 6oz, 2 tear, C rated, Fuller & Co, Greytown, Cannington Shaw maker, minor marks, tiny base bruise, small chips under collar, Good 8/10 (2)



**2. Codd 1399**, 10oz, 2 tear, E rated, James Paul New Plymouth, Barnard Maker, minor lip chips, star crack in marble chamber, 2 small bruises to base, minor marks, Good 6/10, Plus Codd 1398, 6oz, 2 tear, C rated, James Paul New Plymouth, Barnard maker, crate wear, fisheyes, Good 7/10 (2)



**8. Crown Top 586**, 10oz, ABM C rated, Frank Messent Perfect Kaikoura, W B & S Ltd 2322 on base, Very Good 9/10, Plus Crown Top 783, 10oz, ABM, D rated, A. C. Scott & Co Auckland, A.C. Scott & Co in script writing as trade mark, S to base, Illinois Pacific Glass Co maker, minor marks, Very Good 8.5/10, Plus Codd 595, 10oz, 4T, B rated, Gifford Plowman Napier, entwined letters trade mark, 1903 to base, Cannington Shaw maker, internal haze, rim edge bruise, dull, all over wear, rust mark Fair 6/10 (3)



**3. Codd 1121**, 6 oz, 2 tear, D rated, D J Malone Stratford, Kilner Bros maker, Greyhound trade mark, minor marks, Very Good 8.5/10, Plus Codd 862 6oz Reliance Patent, D rated, E. Hodren Wanganui, Rylands Maker, hand holding three bottles trade mark, light wear, minor marks, Very Good 8/10 (2)



**9. Codd 1235**, 6oz 4 tear, B/C rated, Mitchell & Co Crystal Springs Mineral Water Invercargill, Purity Cross to rear, Cannington Shaw maker, minor marks, Very Good 9/10, Plus Codd 1255, 6oz, 4 tear, B rated, Moffett & Co Invercargill NZ, Anchor trade mark, Cannington Shaw maker, 1899 to base, pin head bruise to lip, Very Good 9/10 (2)



**4. Codd 766**, 6oz, bulb shoulder, C/D rated, Grogan's Greymouth, W B & S Ltd 2500 to base, machine made, excellent, 9.5/10, Plus Codd 760, 6oz, 2 tear, C rated, P Grogan Greymouth, Cannington Shaw maker, minor marks, and light wear, Very Good 8/10 (2)



**10. Codd 733**, C rated, 6oz, 4 tear, Grey & Menzies New Zealand, Kilner Bros maker, small base chip, minor marks, Very Good 8.5/10, Plus Internal Thread 226, 10oz aqua, C rated, A C Scott Auckland, Kilner Bros maker, tiny lip flake, broken stopper, small burst bubble, minor marks, Very Good 9/10 (2)



**5. Codd 1004**, 6 oz, 4 tear, E rated, W C J Kortegast Hokitika, Trident to base, minor marks, Very Good 9/10, Plus Codd 1005, 6 oz, 4 tear, D rated, W C J Kortegast Hokitika, Crown trade mark, 4828 to base, minor marks, minor chip to W initial, Very Good 9/10 Plus Codd 1809, 6oz, 4 tear, B rated, Thomson & Co Dunedin, Purity Cross trade mark, 1910 on base, Kilner Bros maker, minor marks, Very Good 8/10 (3)



**11. Codd 1237**, B/C rated, 10oz, 4 tear, Mitchell & Co Crystal Springs Mineral Water Invercargill, Purity Cross to rear, Cannington Shaw maker around base edge, no date, minor marks, rust marks, needs internal wash, Very Good 7.5/10, Plus Codd 1237, 10oz, 4 tear, B/C rated, Mitchell & Co Crystal Springs Mineral Water Works Invercargill, Cannington Shaw maker, no date to base, very light internal haze, few minor scrapes, Very Good 8.5/10, Plus Codd 1913, 10oz bulb neck, D rated, Thomson Lewis Wellington Wanganui Petone, Crystal Springs trade mark, M to base maker, base edge bruise, Very Good 8.5/10 (3)



**6. Codd 94**, 10oz, 4 tear, D rated, Ballin Brothers Christchurch with the Prussian eagle trade mark, A. Alexander maker, minor marks, Very Good 9/10, Plus Codd 2083, 10oz, 2 tear, C rated, Wright & Co, Tuam St Linwood, minor bruises to lip, body and base, Johnsen & Jorgenson maker, Good 7/10 (2)



**12. Codd 141**, 6oz, Reliance patent, C rated, W. Beck Palmerston N, Dan Rylands maker, minor marks, light internal haze, Very Good 8.5/10, Plus Lamont, 10oz, L C Gunsser, Mineral Springs Ballan, no maker, light wear and marks, bottle is full of bubbles and character, Very Good 8/10 (2)



**13.** CABC\_170, 10oz Lamont patent, aqua, D rated, T C Hill Sydenham ChCh NZ, Zebra trade mark, Great pictorial, Cannington Shaw maker, light internal haze, light wear and marks, Good 7/10  
Plus 10oz Lamont patent, aqua, T C Hill Sydenham ChCh NZ, Zebra trade mark, Great pictorial, Pinnacle maker, chips on collar, light wear and marks, Good 7/10 (2)



**14.** 10oz, Lamont Patent, aqua, T A Askew Sydenham ChCh, crossed rifles and Crown as trade mark, Cannington Shaw maker to rear, 4514 on base, minor marks, small scrape to lip, crate wear, Good 7/10, Plus CABC\_560, 6oz aqua Lamont patent, D rated, Alexander & Co Kaiapoi, Alexander maker, trade mark of Britannia holding an Anchor & a Flag, minor marks and light wear, Very Good 8.5/10 (2)



**15.** Codd 1274, 6oz, 4 tear, C rated, Moffett & Co Invercargill NZ, Bagley & Co Maker, 1915 to base, light overall wear, minor marks, small rust marks, Very Good 8/10, Plus Codd 1275, 6oz, 2 tear, B/C rated, Moffett & Co Invercargill, Anchor trade mark, Alexander maker, 1916 to base, body scratch and small impact bruise to rear, light internal haze, Very Good 8/10, Plus Codd 1264 B/C rated, 10oz 4T, Moffett & Co Invercargill NZ, Anchor trade mark, Cannington Shaw makers, 1905 on base, rim edge chip, crate wear, scuffs, fisheyes, Good 6.5/10 (3)



**16.** Codd 1388, 10oz, 2 tear, C rated, spun top, H Pain Westport with rider on horse trade mark, 1191 to base, some very light internal haze, Very Good 9/10, Plus Hogben's patent, 10oz Thomson & Co Dunedin, Lion trade mark, minor lip chip, all over wear, Fair, 4/10 (2)



**17.** Codd 258, 6oz, 2 tear, B rated, C W Brodie Wellington, crossed keys trade mark, Cannington Shaw maker, Excellent, 9.5/10



**18.** Codd 283, 10oz, 2 tear, E rated, H Buckham Cordial Manufacturers Queenstown, Johnsen & Jorgensen maker, light internal haze, minor marks, Very Good 9/10



**19.** Codd 382, 10oz, 4 tear, A rated, John Dawson Reefton NZ JD in shield trade mark, pin head chip to lip, light crate wear, Very Good 8/10



**20.** Codd 495, 6oz 4 tear, A (1-2) rated, J F Drake Milton, Wm Barnard maker, sadly has damage, large impact hole to the back, all over wear, impact bruise to base, Fair 4/10



**21.** Codd 653, 6oz, 2T, B rated, Goodwin Davy & Co Hawera, entwined letters trade mark, Dobson & Nall maker, rear scuff, minor base edge bruises, Very Good 8/10



**22.** Codd 821, 10oz, 4T, B/C rated, Henderson & Co Balclutha, letter H inside a diamond as trade mark, Breffit maker, lip fracture, small bruise to collar, rear body scrapes, Good 6.5/10



**23.** Codd 823, 10oz 4 tear, C/D rated, Basil Henning Onawe Mineral Water Works Akaroa, HPF/BLL 1234 to base, light internal haze, minor marks, Very Good 8.5/10



**24.** Codd 827, 10oz, 2 tear, C rated, Hill & Co Sydenham, Johnsen & Jorgensen maker, back side of marble chamber cut out to become a money box, light wear, minor marks, Fair 5/10



**25.** Codd 1142, 6oz, 4 dimple, B rated, Wm Marshall Balclutha, Barnard Maker, couple of fisheyes, minor marks, Very Good 8/10



**31.** Codd 1775, 10oz, 4 tear, A rated, Thomson & Co Crystal Springs Mineral Water Works Dunedin, no date, crate wear, rim edge chip, burst air bubble and large bubble to rear that has turned opalescent, Fair 5/10



**26.** Codd 1349, 6oz, 4 dimple, C/D rated, J T. Nichols Lawrence, no maker, light amber marble, pin head bruise to lip, light internal haze, few marks & scratches, Very Good 8/10



**32.** Codd 1819A, 6oz, 4 tear, clear glass, spun top, A/B rated, Thomson & Co Crystal Springs Mineral Water Works Invercargill, 1907 to base, no maker, light internal haze, base bruise, scuffs, Good 7/10



**27.** Codd 1472, 10oz 4 tear, B rated, Pike & Waters New Plymouth P & W trade mark, JK&S Maker, lip chip & inside lip bruise, body scrape, light internal haze, Very Good 7.5/10



**33.** Codd 1835, 10oz, 2 tear, A rated, Thomson Gifford & Co Napier, 1888 on base, Patent Safe Groove, Dan Rylands maker, internal haze, base edge chip and accompanying scratch, light wear, & marks Good 7/10



**28.** Codd 1581, 6 oz, 2 tear, C rated, Robinson & Sons Brunnerton & Hokitika, Rylands Ltd makers, pinhead nick to lip, small light patch of internal haze, Very Good 9/10



**34.** Codd 1927, 10oz, 4 tear, D rated, James Turner Geraldine, JT letters trade mark, Vance & Ross maker, minor marks, Very Good 8.5/10



**29.** Codd 1645 10oz, 4 tear, B/C rated, G L Scheppe New Plymouth, Botany Glass Works, minor marks, Very Good 9.5/10



**35.** Codd 1941, 10oz, 2 tear, B rated, Union Brewery and Aerated Water Co Waipawa, Rylands Ltd maker, light internal haze, small body bruise, minor marks, a few fisheyes, Very Good 8/10



**30.** Codd 1798, 10oz, 4 tear, C rated, Thomson & Co Crystal Springs Mineral Water Works, Dunedin, 1905 to base, Cannington Shaw makers, pin head lip chip, small patch of wear to rear, minor marks, Very Good 8/10



**36.** Codd 2091 10oz, 2 tear, A rated, R. Wright Rangiora, great pictorial of Zeppelin Airship, Johnsen & Jorgensen maker, minor lip wear, minor patch of neck haze, light internal haze few scratches to the rear, Very Good 8/10





**37.** Codd 10oz, 2 tear, Made to commemorate the visit of their Majesty King George V and Queen Mary 10th July 1912, ER & a Crown to the rear, Rylands maker, minor inside rim chip, light marks and wear, burst air bubble, Very Good 8/10



**43.** Hogben Patent, 10oz, W J Moffett Invercargill NZ, Coat of Arms trade mark, Patent Aerated Waters to rear, Lumb & Co maker, light internal haze, light scratches, Very Good 7.5/10



**38.** 6oz Codd Hamilton Hybrid, J Delaney De Beers, 3 leaf clover as trade mark, Barnard maker, internal haze, all over wear, tiny inner rim edge chip, fisheyes Fair 5.5/10



**44.** Hogben Patent, 10oz, Barrett & Co Sydney, stoppered bottle as trade mark, Barrett & Ellers London Patent to rear, E Breffit & Co Makers London around base, light internal haze, minor marks, Very Good 8/10



**39.** 10oz 2 tear Codd Hamilton Hybrid, Goldberg & Zeffert Johannesburg, Male Lion trade mark, Riley Mnfg Co London, internal haze, few fisheyes, minor marks, Good 7/10



**45.** 10oz deep aqua blob top, Bennett & Son Dunedin, no maker, no buying or selling etc to reverse, rim edge chip, minor marks, Good 7/10



**40.** 10oz Crown top, Aqua, ABM, B rated, 'Wards Orange Crush, Trade Mark Regd, Bottle Design Patent applied for', Hemsley Bros Dunedin to base, light crate wear, burst air bubble to base, minor marks, Very Good 8/10



**46.** Gledhill's Patent, 10oz, aqua, rare Auckland designed soft drink Patent, perished original rubber ball inside, light internal haze, overall wear/scratches, Good 7/10



**41.** CABC\_602, 6oz Lamont, A rated, Curtis & Co Lyttelton, John Lamont maker, large rim edge chip, minor marks, 6/10



**47.** Bell Patent, 10oz, applied top, The Bell Patent Glass Bottle Works Co Melbourne, light marks, small scrape on base, Very Good 8/10



**42.** GDX037, Hogben Patent, 6oz, George Dixon Cuba Street Wellington, and Bridge Street Nelson, no maker, minor marks, Very Good 9/10



**48.** CABC\_386, 10oz, aqua, lightning stopper, C rated, Saunders & Co Christchurch, picture of Mr Saunders as trade mark, with original ceramic stopper, KB maker, rusty and worn wire on swing stopper, Very Good 8/10, Plus Internal 150, 10oz aqua, C rated, Ingram & Sons Caversham, Riley to base, small base edge chip, Very Good 8/10 (2)





**49.** Internal 31, 10oz, green, Bennett & Son Dunedin, C rated, JK & S 4043 on base, minor rim edge chip, Very Good 8/10, Plus Internal 245, 10oz, dark green, D rated, Thomson & Co Dunedin, C&S & Co 6226 1911 on base, base edge chip, Plus Internal 283, 10oz, green, D rated, Were Bros Christchurch, CS & Co 10037 on base, Plus Internal 287, 10oz, olive green, D rated, Were Bros Christchurch, no maker, small base edge chips, Plus internal 292, 10oz, aqua, D rated, West & Co Dunedin, BLL/HPF 1246 on base, bruise on bubble to front, Plus Internal 293, 10oz, olive green, West & Co Dunedin, D rated, KB Ltd 11751 on base, 2 small chips on collar, patchy wear, all have minor marks, light wear (6)



**50.** Codd 1290, 6oz, 4 tear, E rated, Morley & Co Westport, Bagley maker, crack to marble chamber left hand side, chip to tear at rear, Good 7/10, Plus Codd 2033 10oz, 4 tear, E rated, Were Bros Christchurch P W & S M to base, patches of haze, Good 7.5/10 (2)



**51.** Codd 1823, 10oz, 4 tear, C rated, Thomson & Co Crystal Springs Mineral Water Works, Invercargill, 1908 to base, Kilner Bros to rear, light internal haze, crate wear, chip to one tear, Good 7.0/10, Plus Codd 1817, 6oz, 4 tear, clear glass, spun top, A/B rated, Thomson & Co Crystal Springs Mineral Water Works, Invercargill, 1906 to base, no maker, large fracture to marble chamber at rear, small crack in same area, displays OK, Fair 5/10, Plus Codd 1270, 6oz, 4T, Rarity E, Moffett & Co Invercargill, Anchor trade mark, Alexander maker to rear, 1913 to base, sea washed, all over sickness, scrape to rear, Fair 6.5/10



**52.** Internal 151, 10oz, green, C rated, Ingram & Sons Caversham, Riley maker, original stopper, minor marks, Very Good 9/10



**53.** Codd 1773, 10oz, 4 tear, A rated, Thomson & Co Crystal Springs Mineral Water Works, Dunedin, 1896 to base, large rim edge/ lip chip, internal haze, wear, Fair 4/10, Plus Codd 1810, 10oz, 4 tear, Thomson & Co Dunedin, Purity Cross trade mark, 1910 on base, Kilner Bros around base edge, light wear, fish eyes, Good 7/10, Plus, Codd 1025, 6oz, 4 dimple, Rarity B/C Lane & Co Dunedin, Shield trade mark, Cannington Shaw maker, light internal haze, minor marks, scrape to the rear, Very Good 7.5/10 (3)



**54.** 2 x Blob Top Soda, 10oz, Thomson & Co Dunedin, Crystal Springs Mineral Water Works both 1900, few light scratches, minor marks Very Good 8/10 (2)



**55.** Crown Top 333, 10oz, clear glass, C rated, John Gold & Sons Balclutha, Made in NZ to base, light wear and marks, 7/10, Plus Crown Top 520, 6oz, aqua, C rated, H Mace & Co Christchurch, Illinois Pacific maker, 1917 to base, Very Good 9/10 Plus Crown Top 726, 10oz, clear glass, D rated, T F Quilter Matura, AGM motif to base, all over wear and haze, Good 6/10, Plus Crown Top 864, 6oz, spun top, D rated, Thomson Lewis & Co Wellington Wanganui & Petone, no maker, light wear/marks 8/10 (4)



**56.** Thomson Dunedin crown tops, Crown Top 891, 6oz, applied top, B rated, CS & Co maker, Very Good 8/10, Plus Crown Top 893, 6oz, applied top, B rated, 1912, Alexander maker, Very Good 8/10, Plus Crown Top 894, 10oz, applied top, B rated, 1912, Alexander maker, all over wear, light internal haze, Good 6/10, Plus 2 x Crown Top 897, ABM, 10oz, D rated 1915, Alexander maker, both Very Good 8/10, Plus Crown Top 901, 10oz, ABM, C rated, no date, Dale Brown & Co all over wear, Good 7/10 Plus Crown Top 908, 10oz, ABM, UGB maker, with label, D rated, all have minor marks light wear Very Good 8/10 (7)



**57.** CABC\_211, dumpy internal thread, blue top, E rated, Lees & Evans Christchurch, Bourne 08 potters mark, rim edge chips, crate wear, base edge chip Fair 5/10, Plus GBI47, impressed dumpy cork stopper, H Mace Christchurch Bourne 07 potters mark, minor shoulder chips, rust marks minor wear, Good 7.5/10 (2)



**58.** Internal 162, 10oz, dark olive, C rated, Marlborough Aerated water Co Ltd, Wm Barnard, 1586 on base, minor marks, Very Good 9/10, Plus Internal 281, 10oz, aqua, D rated, Were Bros Christchurch, P W & S M on base, minor marks, Very Good 9/10



**59.** Lamont Patents, CABC\_235, 10oz, C rated, H Mace & Co Christchurch, John Lamont maker, heavy all over wear, Fair 5.5/10, Plus CABC\_245, 6oz, C rated, H Mace & Co minor marks VG 8/10, Plus CABC\_339 Robinson Christchurch KBT maker, light wear, scratches, burst bubble, Good 7/10 (3)



**60.** Hamilton Patent, 6oz, W Lant & Co Coventry, initials inside shield trade mark, light wear/marks, Good 7/10 Plus 6oz, 2 tear, Codd, Qualtrough & Co Ltd Douglas Isle of Man, Cannington Shaw maker, light wear/marks, needs wash Very Good 7.5/10 (2)



**61.** Blob Top Soda, 10oz, Lane & Co Dunedin, L & Co D inside a shield, trade mark, impact bruise to rear, Very Good 8/10, Plus Codd 1042, 10oz, 4D, B/C rated, Lane's Ltd Dunedin, Shield trade mark, Johnsen & Jorgensen maker, all over wear, fish eyes, internal haze, Fair 6.5/10 (2)



**67.** Blob Top Soda, aqua, 10oz, Thomson & Co Dunedin, Crystal Springs Mineral Water Works 1906 to base, burst internal bubble on the blob, small bruise below Dunedin, few light scratches/minor marks Very Good 7/10, Plus Codd 1813, 6oz, 4 tear, C rated Thomson & Co Dunedin, Purity Cross trade mark, 1912 on base, Kilner Bros makers, few body scuff and marks, Very Good 8/10 (2)



**62.** Crown Top 896, C rated, Thomson's Purity, Purity Cross to base, K B Ltd 1915 to lower rear, body scratches, Good 7/10, Plus Crown Top 665, C/D rated, Phoenix Aerated Waters, Wellington & Petone crossed keys trade mark, Very Good 9/10 (2)



**68.** 26oz Crown top, applied top, George Watts Timaru NZ, Drinking Glass as trade mark, Alexander maker, internal haze, body & crate wear, Good 7/10



**63.** Codd 973, 10oz, 4 tear, B/C rated, The Property of A E Kemp Gore, Elephant trade mark, Cannington Shaw makers, 1908 on base, all over wear, minor scratches, internal haze, Good 7/10, Plus Crown Top 109, 6oz, ABM, aqua, H C Buckham Queenstown, AGM NZ on base, minor marks, Very Good (2)



**68A.** PHOENIX WELLINGTON PETONE 26oz CROWN TOP CT-PHO065, Rarity A4, 26oz ABM, The Phoenix Aerated Water Co Ltd Wellington & Petone, large Phoenix trademark, KB Ltd, T maker, 40mm crack to upper body above Phoenix, crate wear, Very Good 7.5/10



**64.** Crown Tops, PHO073, 10oz, C rated, light aqua, ABM, The Phoenix Aerated Water Co Wellington & Petone, Illinois Pacific Glass, burst air bubble to lower rear, (over makers name) minor marks, Very Good 8/10, Plus 2 x H Mace & Co Christchurch, CABC\_267, 10oz, ABM, C rated, IPG Co to base, Very Good 9/10 Plus, CABC\_250, applied top, B rated, minor marks, Very Good 8.5/10 (3)



**69.** Internal 180, 10oz, olive yellow, C rated, James Paul New Plymouth, no maker, rim edge bruise, minor marks, Very Good 8/10



**65.** CABC\_509, 2 x 10oz, aqua, Crown Top, E rated, ABM, Wright & Co Christchurch, with Sailing Ship trade mark, UGB maker, minor lip bruise, neck scrape, crate wear & haze to one, 6.5/10, second one Very Good 8.5/10 (2)



**70.** 2 Gallon, 2 tone stoneware jar, wire handle, F W Dodson Blenheim, no potters mark, tiny glaze scrape on lip, potstone to rear, minor marks, not seen another before, Rare, Very Good 9/10



**66.** Internal 256, 6oz, aqua, E rated, Thomson Lewis & Co Crystal Springs Wellington, C S & Co 5508 to base, minor marks, Very Good 9/10, Plus TNL149, 10oz, light green, lightning swing stopper, Thomson Lewis & Co Crystal Springs Wellington Wanganui Otaki Petone & Levin, property right to rear, original stopper, Very Good 9/10, Plus Codd 1890, 6oz Bulb neck, E rated, Thomson Lewis & Co Crystal Springs Wellington Wanganui Otaki & Petone, Barnard maker, minor marks, Very Good 8.5/10 (3)



**71.** 2 Gallon, 2 tone stoneware jar, no handle, plain stopper, Wm Strachan & Co Victoria Brewery Dunedin, Pearson potter, minor marks, Very Good 8.5/10





**72.** 2 Gallon, salt glazed, wire handle, impressed on shoulder, McGavin & Co Ltd, 2 Gals Liquor 427, base & shoulder chips, wear to lip from handle, Very Good 7.5/10



**78.** 1 Gallon, two tone stoneware Jar, no handle, Sharpe Bros Hands Across the Sea, Exhibition medals for Christchurch 1906/7, single sided version, Pearson potters mark, ding to rim edge and minor chips to rim edge and base edge, Sharpe Bros stopper, Good 7/10



**73.** Gallon, 2 tone stoneware jar, wire handle, Geo Hogg & Co City Brewery Nelson, property rights to rear shoulder, minor chip to spigot hole, Very Good 9/10



**79.** 1 gallon, 2 tone stoneware jar, 2 sided transfer, wire handle, Ponsonby Club Hotel Auckland, no potter, small base crack, crazing, wear to lip from handle, Good 7.5/10



**74.** 2 Gallon, salt glazed, wire handle, J R Briggs, Caversham, 2 gal liquor, unmarked Lambert Dunedin pottery, chipping to green salt glaze blob, minor marks, Very Good 9/10



**80.** 1 gallon, 2 tone stoneware jar, no handle, impressed to shoulder Tui Vinegar (Murdoch Dunedin), Stour Ware potter, generic pure malt vinegar label on front, some edge damage to label, near Mint 9/10



**75.** 2 gallon, stoneware jar in wicker basket, impressed J Holland Nelson on the rim, unrecorded in Rob Packer's Nelson bottle book, rim edge chip, age related wear to the wicker, Very Good 7.5/10



**81.** 1 Gallon, two tone stone jar, T West & Co Maclaggan Street Dunedin Best quality Ginger Beer Hop Beer Mooreland Cider, Bourne potter. Extremely rare version, others have Maoriland not Mooreland, second example known, handle broken/missing, rim edge chip/bruise, under glaze base chip, Fair 6/10



**76.** 1 gallon, salt glazed stone jar, impressed Austral Cordial Co (Dunedin) to shoulder, classic unmarked Lambert Dunedin store jar, large chip to rim edge, Fair 6/10



**82.** One gallon, 2 tone stoneware jar, wire handle, Bainbridge Brothers Auckland New Zealand, Fowler Sydney potter, property rights to back, 2 base chips, light wear to shoulder, minor marks, Good 7.5/10



**77.** 1 Gallon, salt glazed, impressed Tui Vinegar Tui Brand Brewed from Malt & Sugar A Murdoch & Co Proprietors Dunedin, with Tui bird trade mark, unmarked Lambert Dunedin pottery, great salt glaze run over the name and down the body, repairs to top, Good 6/10



**83.** 1 Gallon, salt glazed store jar, unmarked Lambert Dunedin potter, impressed Herbert & Co Ltd Lawrence, body crack to right hand side up to neck passing above Ltd, Fair 6/10



**84.** CABC\_584 1 Gallon, two tone stone jar, no handle, C rated, Alexander & Co Kaiapoi, central trade mark image of Britannia, Pearson potters mark, rear body cracks, Fair 5/10



**90.** CABC\_585 1 gallon, 2 tone stoneware jar, wire handle, A rated Alexander & Co Kaiapoi, central trade mark image of Britannia, Fowler Sydney Potters mark, 140mm hairline to lhs, rough in manufacturing base edge, Good 7.5/10



**85.** Bird Feeder, 330mm tall, salt glazed, unmarked Lambert Dunedin, unusual design with the opening in the shape of a smaller feeder, chip/glaze faults to rear, chip to opening of the feeder, Very Good 7/10



**91.** 1 gallon, stoneware jar, all over honey glaze, impressed to shoulder NZF Rangiora, Luke Adams to base, minor marks, Very Good 9/10



**86.** 1 gallon, 2 tone stoneware jar, with handle, A E Kemp Gore, rider on elephant trade mark, Pearson potter, handle has been replaced/repaired, 50mm shrinkage glaze crack to lhs upper body, 40mm small base edge crack, displays well, Fair 5/10e



**92.** 1 Gallon, two tone stone jar, wire handle, Fred O'Neill Invercargill & Gore, property rights to rear, no potters mark, rim edge chip & bruise, dirty marks, light wear, Good 8/10



**87.** 1 Gallon, two tone stone jar, no handle, T F Quilter Matura, Mauri Bros potter, rim edge chip, small shoulder glaze chip, Good 7.5/10



**93.** 1 Gallon, two tone stone jar, no handle, Sharpe Bros, rare variant image, no potters mark, scarce version, Very Good 9/10



**88.** 1 Gallon, two tone stone jar, wire handle, T F Quilter Matura, Pearson potter, 50mm base edge crack, Good 7.5/10



**94.** 1 Gallon, two tone stone jar, no handle, wire handle, Fred O'Neill Invercargill & Gore, Milton Pottery Otago potters mark, rim edge chips, body chip, rust mark to front, Good 7/10



**89.** 1 Gallon, two tone stoneware jar, no handle, Sharpe Bros Hands Across the Sea, Exhibition medals for Christchurch 1906/7, single sided version, Pearson potter, ding to rim edge and minor chip to spigot hole, original stopper, Good 7/10



**95.** 1/2 Gallon, all over salt glazed jar, impressed to shoulder G. Stumbles Cromwell, Papers Past had him trading as a storekeeper in Cromwell between 1900 - 1950, unmarked Lambert Dunedin Pottery, minor marks, Very Good 9/10





97. 1 Gallon, two tone stone jar, wire handle, Neilson Vickers Dunedin, no maker, property rights to rear, reversed D 16 stamp to body, minor shoulder chip, minor marks, Very Good 8.0/10



103. 1 gallon, 2 tone stoneware jar, E. Griffiths New Zealand 1930 with Welsh Dragon trade mark, minor marks, Very Good 9/10



98. 1 Gallon, two tone stone jar, wire handle, Grant & Maynard Cordial Manufacturers Alexandra, Milton Otago potters mark, rim edge chip, body glaze flakes, Good 7.5/10



104. 1 gallon, 2 tone stoneware jar, Simmonds & Osborne Wellington New Zealand, Lion & Jar trade mark, Fowler 1913 Sydney potter, glaze chips to lip, minor marks, Very Good 8/10



99. 1 Gallon, two tone stone jar, wire handle, The property of A E Kemp Gore, Mauri Brothers potters mark, number 15 on shoulder, in manufacture rough spot to rear, minor marks, Very Good 9/10



105. 1 gallon, 2 tone stoneware jar, wire handle, Thomson Lewis by Appointment to his Excellency Wellington, Petone, Wanganui, & Levin, Pearson potter, small ding/bruise on bung rim edge, dirty glaze to rear, Good 8/10



100. 1 gallon, 2 tone stoneware jar, no handle, Long & Barden Beverages, New Zealand, small crack to base, Very Good 8.5/10



106. 1 gallon, 2 tone stoneware jar, no handle, Gisborne Brewery and Aerated Water Factory, Pearson Potter, with spigot, base edge chip, kiln kiss, Very Good 9/10



101. 1 gallon, 2 tone stoneware jar, wire handle, Wai Wai Mineral Water Co Ltd Stanley Street Auckland, minor rim edge nibbles & small bruise, base edge chip, Pearson potter, Very Good 8.5/10



107. 1 gallon, 2 tone stoneware jar, Sharpe Bros Hands Across the Sea, Exhibition medals for Christchurch 1906/7, double sided version, no spigot, ding to rim edge, small lower edge hairline Good 7/10



102. 1 gallon, 2 tone stoneware jar, wire handle, Grey and Menzies New Zealand, with Fern frond decoration, with spigot, Pearson potter, fleabite to rim edge Very Good 8.5/10



108. 1 gallon, 2 tone stoneware jar, J Granville Wanganui & Waverley, Horseshoe/Clover & Thistle trade mark, Pearson Potter, 150mm tight hairline crack right hand side, base edge to chip rhs, Good 7/10



**109.** 1 gallon, 2 tone stoneware jar, wire handle, Smith Bros Makers Pure Home Brewed Drinks Gisborne, lip bruise, Very Good 8/10



**117.** CABC\_ 330, 10oz, C rated, Raines Aerated Soda Water Christchurch Canterbury New Zealand, all over wear/dull, pin head lip chip Fair 6/10



**110.** 1 gallon, 2 tone stoneware jar, Sharpe Bros Hygienic Brewers Takapuna, no potter but looks Christchurch Brick? original stopper, potstone right hand side of shield, Very Good 8.5/10



**118.** Hamilton Patent, 10oz aqua, P. G Dixon Rosslyn St Melbourne, Rampant Lion trade mark to rear, minor lip chip/ bruise, light internal haze, 2 burst bubbles, rust marks, light wear, Good 6/10



**111.** 1 gallon, 2 tone stoneware jar, wire handle, Alfred Bray Superior Beverages Ashburton with spigot and tap, no potters mark, small chips to spigot, base edge & under base, minor marks, Very Good 8/10



**119.** Hamilton 104, 10oz, C/D rated, Thomson & Co Crystal Springs Mineral Water Works Dunedin dated 1898, Purity Cross trade mark to rear, pin head chip to lip, minor marks, Very Good 8.5/10



**112.** 1 gallon, 2 tone stoneware jar, wire handle, Sharpe Bros Hands Across the Sea, Exhibition medals for Christchurch 1906/7, single sided version, with spigot, Pearson potter, small top version, tiny crack and chip on spigot, Very Good 8.5/10e



**120.** Hamilton Patent, 10oz aqua, 'Webbs Double Soda Other Waters to her Majesty Islington London', minor lip bruise, minor marks, Very Good 8/10



**113.** 1 gallon, stone jar with handle, nice light tan glossy glaze, impressed W. Robinson Chertsey to shoulder, marked Stour Ware to base, fleabite to inner rim, Very Good 9/10



**121.** Hamilton 106, 10oz, C/D rated Thomson & Co Aerated Waters Dunedin Established 1865 Thomson & Oamaru, minor marks, small burst air bubble, Very Good 8.5/10



**114.** gallon, 2 tone stoneware, wire handle, Long & Barden New Zealand, Pearson potter, rim edge chipping/dings, light wear, Good 7/10



**122.** 10oz Hamilton Patent, light lime green tinge, Double Carbonated Soda Water London, minor lip edge chips/ bruise, light wear, Good 7.5/10



**123.** Hamilton 3, 10oz, D rated, D J Barry Gisborne, entwined letters trade mark, bruise to embossing D of word registered, minor marks, Very Good 7.5/10



**124.** CABC\_184, 10oz, D rated, Lees & Evans Reliance Christchurch, Anchor as trade mark, internal haze, dull, light wear, Good 7/10



**125.** Hamilton 115, 6oz, D rated, Y-Y Registered trade mark, rim edge fleabite chip, minor marks, light internal haze, Very Good 8/10



**126.** Hamilton 66, 10oz, C rated W J Moffett Invercargill, minor marks, bruise to air bubble, Very Good 8.5/10



**127.** Hamilton 41, 10oz, C/D rated A E Kemp Gore, all over wear, dull patch to lower half, internal haze, scuffs, Good 6.5/10



**128.** Hamilton 106, 10oz, D rated, Thomson & Co Aerated Waters Dunedin Established 1865 Thomson & Oamaru, chips to TH of Thomson, minor marks, Very Good 8/10



**129.** CABC\_297, 10oz, C rated, H J Milsom & Co, has been hand polished? light overall wear, Good 7/10



**130.** 21 Codd's of Codd 1816, 6oz, 4 tear, F rated, Thomson & Co Dunedin 1914 to base, all with labels, Very Good 8/10, Plus 1 x Codd 1811, 6oz 4 tear C rated Thomson & Co Dunedin, 1911 to base, Very Good 8/10, the label says, 'Special Artesian Soda Water, as supplied to his majesty the King and Duke of Gloucester, Thomson Lewis & Co Ltd'. Some with small lip or base edge chips, crate wear, labels mostly in Very Good or Good condition some have tears damage etc (22)



**131.** Syphon 121, 30oz Pall Mall, B7 rated, Christchurch Aerated Water Company, F W Dickens Proprietor with a Zebra trade mark, original top, minor bruise to rear shoulder, body and base edge, Rare coloured Syphon, Very Good 8.5/10



**132.** Syphon, 30oz smokey amber, Pall Mall, A G Saunders Muswellbrook N S W original top, minor body dings and marks, Very Good 7.5/10



**133.** Syphon 745, 30oz St James, A4 rated, Waikato Aerated Waters Ltd, Te Awamutu, clear glass filled with red liquid, original red plastic top, Very Good 9/10



**133A.** PAIN WESTPORT SYPHON Syphon 513, Rarity A330oz round clear, H Pain Cordial Manufacturer Westport, Blackmore top, no straw, large base edge bruise to rear, a few fisheyes, light wear, Good 6.5/10



**135.** AR01 all over salt glazed, A+ rated, impressed Arthur (Auckland) to shoulder, T Field Potter Sydney, manufacturers? chip over word Arthur, base chip, light body wear, a significant early Auckland bottle, Very Good 7/10





**135.** GBI6, BAC\_066, blob top, cork stoppered, B/C rated, J L Bacon Registered, JLB trade mark, Extra Quality Wellington, Doulton 42 potters mark, rim edge chip, lip hairline, tiny shoulder & base edge chips, Very Good 7.5/10



**142.** Early salt glazed tan ginger beer, impressed E Fowler Potter Sydney, several body cracks, rim edge chips, Fair, 4/10



**137.** BEN014, blob top, internal thread, Bennett & Ready Wellington, trade mark standing Lion GD, Bourne Denby 07 potters mark, potstone under Wellington, base edge chips, Very Good 8/10



**143.** GBI56, all over salt glazed, blob top, cork stoppered, W J Moffett Invercargill, light wear and marks, rim edge wear/glaze chip, scratch to the rear, Very Good 7.5/10



**138.** CWB014 blob top, Blue Top, cork stoppered, B/C rated, C W Brodie Wellington, Doulton 20 potter, light shoulder wear, base edge chip at rear Very Good 8/10



**144.** GBI53, blob top, cork stoppered, cream coloured, N J Moffett Invercargill, light wear and marks, minor marks, Very Good 9/10



**139.** CWB016, tan blob top, cork stoppered, D rated, C W Brodie Wellington, Hutson potter, 50mm tight hairline on the shoulder, light wear, minor marks, Good 7/10



**145.** GBI52, blob top, cork stoppered, cream body, impressed N J Moffett Invercargill, light wear and marks, small glaze miss, small base edge chip, Very Good 8.5/10



**140.** CWB015, blob top, Blue Top cork stoppered, D rated, C W Brodie Wellington, Doulton Lambeth potter, shoulder wear & chips, minor marks, Very Good 7.5/10



**146.** GBI54, all over salt glazed, dumpy cork stoppered, W J Moffett Invercargill NZ, minor shoulder & base edge chips, minor marks, Very Good 8/10



**141.** GDX028, all over salt glazed, cork stoppered, champagne shaped, B rated, trade mark Lion G D to body, Hutson potter, small rim edge chip, Very Good 8/10



**147.** NZA003, blob top, cork stoppered, cream coloured, D rated, NZ Aerated Water & Cordial Co Limd, Price Bristol potters mark, minor base edge chip, Very Good 8.5/10





**148.** GBI59, all over tan top, dumpy cork stoppered, A rated, T O'Leary Blenheim Lovatt 98 potter, crazing, small base edge chip, minor marks, Very Good 8/10



**154.** TNL117 all over tan, internal thread, B/C rated, impressed Thomson Lewis & Co Wellington, no potters mark, minor marks, Very Good 8/10



**149.** GBI62, all over tan, dumpy cork stoppered, A rated, T O'Leary Blenheim Lovatt & Lovatt Notts Langley Mill potters mark, minor wear on base edge, Very Good 9/10



**155.** GBI80, TNL119, internal thread, tan body, cream top, B rated, Thomson Lewis & Co Wellington Wanganui & Otaki, whitened to highlight impression, original stopper, light wear, base chip, Very Good 8.5/10



**150.** GBI60, all over tan dumpy cork stoppered, A rated, T O'Leary Blenheim Lovatt 99 potters mark, professional repair to shoulder 7/10



**156.** GBI83, cork stoppered, all over salt glazed, Wadman Bridge St Nelson, no potters mark, crude repair to top, shoulder chips, base edge chips, Fair 4/10



**151.** PHO087 blob top, internal thread, A/B rated, The Phoenix Aerated Water Co, Wellington, Phoenix trade mark, Bourne 7 Eastwood, potters mark, light wear on lip and shoulder, base edge wear and small chip, has several finger prints imprints, Very Good 7.5/10



**157.** GBI82, Cork stoppered all over salt glazed, Wadman Bridge St Nelson, no potters mark, rim shoulder & base chips, body manufacturers chip, crack above Wadman, Fair 5/10



**152.** CABC\_361, salt glazed, internal thread, D rated, J Robinson & Sons Linwood Christchurch NZ, Bicycle as trade mark, Lovatt 07 Lovatt potter, minor rim edge & base chips, pin head marks to body, Good 7/10



**158.** GBI85, Cork stoppered, all over salt glazed, impressed Wadman Bridge Street Nelson, no potters mark, has hole underneath, tiny rim edge chip, Fair 5/10



**153.** CABC\_361, salt glaze blob top, D rated, J Robinson & Sons Linwood Christchurch NZ, Bicycle as trade mark, Lovatt 07 Lovatt potters mark, wear to body, and shoulder, small base edge chip, light scratches to rear, potstone to lip, Very Good 7.5/10



**159.** WAR003, all over salt glazed blob top internal thread, B rated, Wellington Aerated Water Co Registered, whitened to highlight impression, minor marks, Very Good 9/10



**160.** GBI88, CABC\_521, all over salt glazed blob top internal thread, D rated, Wright & Co Christchurch, Sailing/Steam boat trade mark, Wright & Co on Shoulder, Bourne 14 Denby, whitened to highlight impression, minor shoulder edge nibble, rust marks, light wear, Good 8/10



**166.** English Ginger Beer, two tone, cork stoppered, blue print, Firths Darlington Old Fashioned Brand Brewed Ginger Beer, attractive pictorial trade mark of a Train Locomotive, Gray 7 Portobello Potters Mark, small rim edge glaze chip, Very Good 8.5/10



**161.** GBI89, CABC\_523, all over salt glazed, dumpy crown top, B rated, Wright & Co Christchurch, Sailing/Steam boat trade mark, Bourne 16 Denby, repairs to rim edge/top, minor shoulder edge wear, minor base edge chip, Good 6/10



**167.** 2 South African Ginger Beers, all tan dumpy cork stoppered, black print, W H & J Morgan Port Elizabeth, Angel with wings Purity in love heart as trade mark, Price 5 Bristol potter, several small shoulder chips, body crack to right hand side, minor marks, Good 7/10, Plus two tone, crown top, Makepeace's Port Elizabeth Star Brand Renowned Ginger Beer, Price Bristol Potter, minor marks, Very Good 8.5/10 (2)



**162.** CABC\_733, all over salt glazed, blob top, internal thread, A rated, R Wright Rangiora and R Wright Rangiora on shoulder, Bourne 12 Denby glaze wear to body, minor wear, 8/10



**168.** Indian Ginger beer, two tone crown top, Cotton & Co Calcutta, life buoy & Anchor trade mark, Bourne 35 Denby Potter, Very Good 9/10



**163.** Ginger Beer, small size 187mm tall, tan top brown print, crown top, John Milne Stonehaven (east coast of Scotland) Buchan potter, minor marks, Very Good 8.5/10



**169.** CABC\_051, all white, blob top, D rated, Ballin Brothers Christchurch, Prussian eagle trade mark, Bourne 0 potter, original stopper, light wear & rust marks, kiln kiss marks, Very Good 8/10



**164.** Ginger Beer, light blue top, crown top Berer Meppel Sparkling Drink, Inhoud 0.3 liter, Buchan potter, light glaze wear to lip, minor marks, Very Good 8.5/10



**170.** GB24, tan top, blob top, D J Barry Gisbobne (note spelling error), light rust marks, with original DJB stopper (with chip), Very Good 7.5/10



**165.** Ginger Beer, green top, green print, J Orr Comrie Springbank Glasgow, plain stopper, Port Dundas potter, 2 x 30mm cracks to lip, crazing, Fair, 6/10



**171.** GB58, tan top, crown top, C A Clarke Ginger Beer Rotorua entwined letters trade mark, Bourne Z potter, small lip repair, base edge repair, some scuff marks to body, Good 6/10



**172.** GB93, all white, blob top, Blue Print, Ye Old Fashioned Fermented Ginger Beer J R Dodson Nelson, image of HMS Victory as trade mark, Doulton 14 potter, original stopper, base edge repair and chip, rim edge ding/bruises, chips to shoulder edge, Good 6/10



**179.** GB129, blob top tan top, original stopper, Grey & Menzies New Zealand, no potter, but has star symbol to rear, kiln kiss, small impact mark on lip, Very Good 8/10



**173.** GB101, tan top, crown top, D F Fitzgerald, A Rated, Bourne 27 Denby potter, 140mm large body crack runs from just below the rim edge down the body, second hairline around the neck, under glaze base edge chip, Fair 6/10



**180.** GB133, tan top, crown top, Grey & Menzies New Zealand, Govancroft 1 potter, minor rim edge chip, potstone on shoulder, light wear, Very Good 8.5/10



**174.** GB110, tan top, crown top, Gilberd's & Co Ltd Brewed Ginger Beer, Bourne potter, tiny rim edge scuff, crazing in neck area, Good 7.5/10



**181.** GB149, tan top, crown top, Handley's Original Brewed Ginger Beer Y-Y trade mark, no potter, crack from lip to half way down tan top, rim edge nibble, minor marks, Good 6.5/10



**175.** GB110, tan top crown top, Gilberd's & Co Ltd Brewed Ginger Beer, Bourne 26 potter, inner rim edge chip, potstone to rear shoulder, rust marks to base area, Good 7/10



**182.** GB149, tan top, Handley's Original Brewed Ginger Beer Y-Y trade mark, Bourne potters mark, scrape to rear of neck, Very Good 8/10



**176.** GB113, large Champagne style, D rated, Goodwin Davy & Co Ginger Beer Hawera, no potter, minor marks, small glaze miss to base edge, Very Good 8.5/10



**183.** GB149, tan top, Handley's Original Brewed Ginger Beer Y-Y trade mark, Bourne 35 potters mark, minor wear, Very Good 8.5/10



**178.** GB140, green top, crown top, Grogan's Brewed Ginger Beer Greymouth, Bourne 37 potter, minor marks, Excellent 9.5/10



**184.** GB151, green top, crown top, B/C rated, Bourne potter, Hemsley Bros Ginger Beer Dunedin, heavy glaze crazing, minor marks, Very Good 8/10



**185.** GB176, red/brown top, C L Innes & Co Ltd Auckland & Hamilton, Govancroft 1 potter, minor marks, Very Good 8.5/10



**191.** GB254, all white, dumpy cork stopper, James Paul New Plymouth, Bourne Denby potter, tiny bruise and wear to rim edge, shoulder and body, small base edge chips, Good 6.5/10



**186.** GB176, red/brown top, C L Innes & Co Ltd Auckland & Hamilton, Govancroft 4 potter, capital I on base, shoulder scuff, under base edge chip, minor marks, Very Good 8/10



**192.** GB254, all white dumpy cork stopper, James Paul New Plymouth, Bourne 1 Denby, pinhead chip to lip, Excellent 9.5/10



**187.** GB179, tan top, dumpy internal, A E Kemp Gore, rider on elephant trade mark, Bourne potter, 10mm tight hairline left hand side, lip hairline, Good 7/10



**193.** GB261, tan top swing stopper, The Phoenix Aerated Water Co Ltd, Wellington & Petone, Bourne 22 potters mark, 130mm large rear neck/body crack, Fair, 6/10



**188.** GB176, red/brown top, C L Innes & Co Ltd Auckland & Hamilton, Govancroft 1 potter, lip repair, potstone to side, Good 7/10



**194.** GB 262, tan top swing stopper, (missing swing stopper), The Phoenix Aerated Water Co Ltd, Wellington & Petone, Govancroft potter, potstone by R of water and to rear, speckled glaze to body, Good 7.5/10



**189.** CABC\_286, blue top, H Mace & Co Christchurch, D rated, Dogs head as trade mark, Christchurch Brick Co marked, minor lip chips, Good 7/10



**195.** CABC\_362, tan top, blob top, E rated, J Robinson & Sons Linwood Christchurch, Bicycle as trade mark, Bourne 11 potter, minor lip bruise, minor shoulder chip & bruise, patchy dirty glaze to rear, minor marks, Good 7.5/10



**190.** GB221, green top, crown top, D rated, H Mace & Co Christchurch, Dogs head trade mark, Bourne E potters mark, rough area in lip (in manufacture), light crazing, Very Good 8.5/10



**196.** GB289, all over tan, blob top, Saunders & Co Christchurch, image of Mr Saunders as trade mark, Bourne 0 potter, original stopper, 70mm crack to left hand side, minor rim edge glaze flake, Good 7/10





**197.** GB335, tan top, swing stopper, Thomson Lewis Ye Olde Fashioned Ginger Beer Wellington Wanganui & Petone, Bourne 28 potter, plain stopper, minor nick on stopper, 140mm body crack to rear, Very Good 7.5/10



**203.** Poisons, 180mm tall rectangular Not To Be Taken, 12oz to base, Plus 170mm tall hexagonal not to be taken, no base marks, Plus 2 x 86mm tall Jacob Hulle not to be taken Strychnine, 21/2 to base, Plus 147mm tall James Sinclair & Son London, small rim edge chip, all in excellent condition 9/10 apart from the Sinclair, dull all over 6/10 (5)



**198.** GB336, tan top, swing stopper, Ye Olde Fashioned Ginger Beer Thomson, Lewis & Co Wellington Wanganui & Petone, Bourne 30 Denby potter, missing stopper but has wire, minor marks, 8/10, Plus GB335, tan top swing stopper, (no bale or stopper) Ye Olde Fashioned Ginger Beer Thomson, Lewis & Co Wellington Wanganui & Petone, Bourne potters mark, 2 x 20mm cracks from lip to near base, base edge chip, 6/10, plus another GB336, large 180mm body cracks, Fair 4/10 (3)



**204.** 5 Cobalt blue bottles, left to right, 190mm applied top Cylinder with label Wintergreen, The Gower Pharmacy Wellington, 500 to base, burst air bubble to rim edge, dull patch around lip, Very Good 8.5/10, Plus 187mm applied top cylinder, 500 to base, full of air bubbles, Very Good 9/10, Plus 138mm Sal Antiseptic Huxley Brand, vertical ribs to the rear, Very Good 9/10, Plus 178mm hexagonal, Poison Not to be Taken embossed on one panel, 10oz to base, burst air bubble to front panel, tiny body bruise to rear, Very Good 8/10, Plus 156mm tall hexagonal, Poison Not to be Taken embossed on one panel, 1570 to base, Very Good 8.5/10 (5)



**199.** GB362, tan top, dumpy internal thread, Williams & Co Nine Mile Road, Kawatiri Cordial Factory, Westport NZ, Port Dundas potter, original stopper, minor nibbles to rim edge, dirty glazing especially at back, Good 7.5/10



**205.** Miniature Queens Head Pot Lid, 32mm diameter, Cherry Toothpaste Patronised by the Queen Free Sample example, flange & rim edge chips, & underside cracks, base has rim edge chip and rust marks, Fair 6/10



**200.** GB373, blue top, crown top, Champagne style, Wright & Co Christchurch Kodo Carbonated Stone Ginger, Steam/Sail boat as trade mark, Bourne potter, glaze hairline to rear, Very Good 8/10



**206.** Pot Lid, 55mm diameter, red print pot lid, Trouchet's Corn Cure Safe Reliable with a lighthouse as a trade mark, base is not the correct fit and is dull stained appearance, lid is Very Good 8/10



**201.** Eton Star poison, 91mm tall, orange/amber with vertical warning lines (as opposed to the familiar horizontal ones), minor lip chip, & rough spot to the lip, 30mm crack from lip to just below shoulder, Good 6/10



**207.** Pot Lid, 65mm diameter, black print, James Atkinson's Bears Grease, 24 Old Bond Street London, Price 2/6, base edge chip, some staining, Good 7/10



**202.** Perfume, 115mm tall, clear/amethyst, J M Farina Cologne, pontil to base, light internal haze, internal dirt residue, minor marks, Very Good 8.5/10



**208.** Pot Lid, 63mm diameter, black on white, lid, James Atkinson's Bears Grease, 24 Old Bond Street, London, Price 2/6, crazing, heavy staining, Good 6.5/10



**209.** Perfume, 170mm tall, light aqua, labelled cologne bottle, Eau De Cologne Australia Farina Limited, embossed De Colone 1648 to rear, pencil marks to label, Very Good 8/10



**215.** Oil Bottle, pint size, clear, light aqua, Castrol Motor Oil, Property of C C Wakefield & Co to the rear, AGM maker, original metal top, green background, Very Good 9/10



**210.** Chemist, 205mm tall, aqua, spun top, emulsion shaped chemist, M Marshall Pharmacist Dunedin NZ with pictorial Phoenix trade mark, W T & Co USA 1 on base, has had a professional polish, small rim edge chip, minor marks, Good 7/10



**216.** Oil Bottle, pint size, clear glass, Castrol Motor Oil, Property of C C Wakefield & Co to the rear, AGM maker, original metal top, red background, some paint loss to pourer, Very Good 8/10



**211.** Dose Cup, 48mm tall, G W Hutchins Chemist & Druggist Balclutha, W T & Co to base, Very Good 9/10



**217.** Bitters, 220mm tall, amber glass, Dr Hostetter's Stomach Bitters, M to base, spun top, Very Good 9/10



**212.** Dose Cup, 48mm tall, Macalister & Co Chemists Invercargill, W T & Co to base, Very Good 9/10



**218.** Gin, 275mm tall, olive green, tapered gin, Louis Meeus Anvers, minor lip chip, Very Good 8/10



**213.** Dose Cup, 48mm tall, Wilkinson & Son, Medical Hall Dunedin, W T & Co to base, Very Good 9/10



**219.** Gin, 270mm tall, yellow olive, tapered free blown Pig Snout Gin, bruise to upper neck, small body chip, tiny shoulder crack, minor marks, Very Good 7/10



**214.** Oil Bottle, quart size, clear glass, Castrol Motor Oil, Property of C C Wakefield & Co to the rear, AGM maker, minor marks, Very Good 8/10



**220.** Black Glass, 250mm tall, dark olive green, classic early Skittle shaped, light wear/minor marks, small lip bruise. Very Good 8/10



221. Gin, 235mm tall, yellow olive, tapered gin, V Marken & Co to one panel, 3 to base, minor lip chip, minor marks, Very Good 8.5/10



227. Schnapps, 225mm tall, mid green, Jurgen Peters, with sunrise styled motif, light external wear/scratches/marks, Good 7/10



222. Gin, 230mm tall, yellow olive, tapered gin, African, 3 to base, base edge chip, minor marks, Very Good 8/10



228. Cure, 245mm tall, safe on left pint, amber, double ring, Warner's Safe Cure 4 Cities, dull patches, lip bruise, full of seed bubbles, Good 7.5/10, Plus dark red, amber, double ring, Warner's Safe Cure 4 cities, few dull patches, Very Good 8/10 (2)



223. Gin, 265mm tall, olive green, tapered gin, A C A Nolet Schiedam, needs clean, minor marks, 8/10



229. Sarsaparilla, 240mm tall, green, Dr Townsends Sarsaparilla Albany N Y, body scrapes, minor marks dull patches, Good 7/10



224. Bitters, 230mm tall, dark amber glass, Dr Soules Hop Bitters 1872, light haze, crack to one edge on body, amazing example totally filled with seed bubbles, large BI to base, Good 6.5/10



230. Beer, 280mm tall, the taller of the 3 known classic Black Horse Beers, rearing Horse trade mark with diamond registration marks to shoulder, light wear/ internal residue, Very Good 9/10



225. Cure, 1 Pint amber, embossed Warner's Safe Cure Melbourne, large Safe as trade mark, light wear, Very Good 8.5/10



231. Gin, 250mm tall, tapered olive gin, 'N Y' seal on shoulder, a rare offering, made to commemorate the opening of the P Melchers Distillery in New York, minor marks, Very Good 9/10



226. Bitters, 230mm tall, dark amber glass, Dr Soules Hop Bitters 1872, pin head lip chip, light haze, 60mm crack to one edge on body, very hard to see, A to base, Good 6/10



232. Gins, L-R, 135mm tall, Genuine hollands Geneva, A, Houtman & Co Schiedam, Plus 110mm tall, John De Kuyper & Son Rotterdam, Plus 110mm tall Lucas Bols Amsterdam, damage to label. All 3 are sealed but empty, minor marks, Very Good 8/10 (3)



**233.** Wine, 235mm tall, black glass, applied top, c1880 Seal to body, seal reads Inner Temple, minor marks, Very Good 9/10



**239.** Sarsaparilla, 240mm tall, dark olive, Dr Moorehouse's Sarsaparilla with Phoenix trade mark, 1084 to base, minor marks, thought to be an Auckland bottle, Very Good 9/10



**234.** Schnapps, 205mm tall, olive glass, De Wit & Co Aromatic Schnapps Schiedam, unique manufacturing fault to base adds to its appeal, minor marks, Very Good 9/10



**240.** Schnapps, 215mm tall, light olive green, J J W Peters, trade mark of a Retriever Dog with prey in its mouth, light wear Very Green 9/10



**235.** Bitters, 245mm amber glass, Dr Soules Hop Bitters 1872, minor lip chip, Very Good 8.5/10



**241.** Whisky, 240mm tall, dark olive yellow, shoulder seal marked 'Thorne, R T & S', Reg No 233870 embossed to base, patches of haze, light marks, Very Good 8/10



**236.** Gin, 265mm tall, case gin, embossed on one panel, 'NZ', minor marks, Very Good 8.5/10



**242.** Gin, 270mm tall, mid olive green, moulded case gin, shoulder applied seal 'Holland Schiedam', with picture of 2 Birds? has indistinct remains of a label, minor lip chip, Very Good 8/10



**237.** Cure, 305mm tall, dark olive green, spun top, 2 piece mould, seal halfway down the long neck, Vieille Cure De Cenon, French liqueur, kickup to base with 314 embossed, minor marks, Very Good 9/10



**243.** Liqueur, 223mm tall, rolled lip, square shaped with smooth rim, applied seal for 'F Drioli Zara', Drioli to base, leans to the right, Very Good 9/10



**238.** Alcohol, 290mm tall, deep cobalt blue, open pontil, double ring applied top, light wear to base, light internal residue, minor marks, Very Good 8/10



**244.** Liqueur, 220mm tall, square shaped smooth rim, applied seal for 'F Drioli Zara', light scratches, Very Good 8/10





**245.** Liqueur, 278mm tall, round shaped, applied seal for 'F Drioli Zara', inner rim edge chip, minor marks, Good 8/10



**251.** Beer 266D, 26oz, mid olive green, C rated, R Powley Dunedin, Moa bird as trade mark, AGM motif on base, minor marks, small rust marks, Very Good 8.5/10



**246.** Gin, 240mm tall, olive green, v Hoytema Co, light wear and marks Very Good 8/10, Plus 250mm tall, plain applied top black glass Whisky minor marks and wear, 8/10, Plus Beer, 285mm tall, applied top black Beer, Machens & Co Liverpool Beer Merchant to base, light wear and marks, Very Good 8/10



**252.** Beer, Ring Seal 27, 26oz, applied top, olive green glass, Powley & Keast The Moa Bottling, with Moa bird trade mark, light wear, known as small Moa big print version, small lip chip (to rear), tiny base bruise, minor marks, Very Good 8/10



**247.** Schnapps, 235mm tall, dark olive green, Schnapps Aromatico Schiedam, tiny stress crack in the neck, minor marks, Very Good 8/10



**253.** Beer, Ring Seal 28, 26oz, applied top, olive green glass, Powley & Keast The Moa Bottling, with Moa bird trade mark, light wear, few scratches, tiny internal lip bruise, known as big Moa small print version, Very Good 8/10



**248.** Beer 268b, olive green, 26oz, E rated, ABM, R Powley Dunedin, Ale & Stout, Moa bird as trade mark, AGM motif on base, patches of wear, some scratches, minor marks, Very Good 7.5/10, Plus Beer 268b, olive green, 26oz, E rated, R Powley Dunedin, Ale & Stout, Moa bird as trade mark, AGM motif on base, minor marks, Very Good 8.5/10, Plus Beer 268b, olive green, 26oz, E rated, ABM, R Powley Dunedin, Ale & Stout, Moa bird as trade mark, AGM motif on base, minor marks, Very Good 8.5 /10



**254.** Unlisted version of Beer 335, 26oz, ABM, A rated, teal green, etched Thomson's Purity, has a base kickup, internal residue, need a clean, minor marks, Very Good 8/10



**249.** Beer 268b, 26oz, olive green, ABM, E rated, R Powley Dunedin, Ale & Stout, Moa bird as trade mark, AGM motif on base, minor marks, scuff underneath of Registered, Very Good 9/10 Plus, Beer 267, 26oz, dark teal green, spun top, F rated, R Powley Dunedin, Ale & Stout, Moa bird as trade mark, B on base, light marks and wear, Good 7/10, Plus Beer 267, 26oz, dark teal green, spun top, F rated, R Powley Dunedin, Ale & Stout, Moa bird as trade mark, B on base, base edge chip, light marks and wear, Good 6.5/10 (3)



**255.** Beer, 26oz Crown Top, spun top, honey amber, C.B. & W.B. Ltd Newcastle, minor inner rim chip, Very Good 9/10



**250.** Beer 180a 26oz, pale green, spun top, C rated, McGavin & Coy Ltd Brewers & Bottlers Dunedin NZ, hands holding chain trade mark, bottle made in Japan, Y G M Co on base, rim edge chip, light wear, Very Good 8/10, Plus Beer 182, 26oz, pale olive green, ABM B rated, McGavin & Coy Brewers & Bottlers Dunedin, hands holding chain trade mark, no maker, light wear, & marks, Good 8/10 (2)



**256.** Beer 217C, dark amber, ABM, C rated, Moffett & Co Invercargill, Anchor as trade mark, NZ to base, (not AGM NZ as in the book), minor inner rim nick, minor pitting to rear, has internal residue, Very Good 7.5/10



**257.** Beer 279a, 26oz, Crown Top, ABM, light olive green, D rated, Powley & Keast Moa Brand, Ale & Stout Dunedin NZ, Moa trade mark, tiny under lip chip, Very Good 9/10



**263.** HP04, 175mm tall, square, aqua applied top, Hayward Bros Christchurch, Flag trade mark, minor inner rim lip chip, minor marks, Very Good 8/10



**258.** Beer 82, 26oz, amber, D rated, Bottled by Cowie Brewery & Bottling Co Ltd, Dunedin NZ, AGM Co NZ to base, minor scratches and marks, Very Good 8.5/10 Plus 26oz, green, ring seal Maitland Brew Co Ltd Sydney, with Bull trade mark, crate wear, light rust patches, remains of oily product inside bottle, Very Good 8/10



**264.** lbj01, 2lb, applied top, aqua jam, The Lion Brand, Lawrence Bros Jams (Invercargill) M maker to base, 2 burst air bubbles, one on base, minor marks, Very Good 9/10, Plus 195mm tall, applied top, aqua pickle, The Maclean Pickle & Preserving Compy Ltd, a scarce early Christchurch pickle, minor marks, Very Good 8.5/10 (2)



**259.** GLv01, large 360mm tall, aqua, spun top, Globe Malt Vinegar, (Chrystall & Co Globe Packaging Co Christchurch), operated from 1878 – 1912, minor body bruise and burst air bubble, tiny rim edge chip, remains of internal dirt, Very Good 7/10



**265.** BEP01, 195mm tall, Bengal Madras Chutney Co Dunedin, Made In Dunedin to base, fisheyes near base, minor marks, Very Good 9/10



**260.** 220mm tall, aqua fruit jar, embossed 'Doolittle', with 4 slots in lip for a closure, chip to one slot, and minor chip to a second, Very Good 7.5/10



**266.** MENp01, aqua, applied top pickle, Menzies & Co Dunedin, Crown Re-Co Brand, BGW to base, burst air bubble to base, minor marks, small rust mark to base, Very Good 9/10



**261.** PHf01 205mm high, clear glass fruit jar, The Phoenix Co Limited Dunedin, Phoenix trade mark, minor rough edge, inner lip, Very Good 9/10



**267.** 2lb mid blue applied top, Fine Table Salt from J T Morton Leadenhall Street London, 906 on base, light wear/internal haze, 2 small internal lip chips, Very Good 8/10



**262.** HNf01 183mm tall, clear glass fruit jar, J H Hinton & Cos Bottled Fruits Dunedin, minor marks, Very Good 9/10



**268.** 2lb mid blue applied top, Fine Table Salt from J T Morton Leadenhall Street London, 147 on base, tiny lip bruise & chip, minor marks, Very Good 8/10



**269.** 173mm tall, light amber spun top pickle bottle, smooth base, minor marks, Very Good 9/10, Plus 190mm tall, dark amber, spun top pickle bottle, smooth base, body scratches & marks, Good 7.5/10



**275.** Goldfields Oil, 205mm tall, applied top, smooth base, embossed 40, fluted American pepper sauce, internal haze, tiny nicks in neck and body, Good 7.5/10



**270.** 145mm tall, Half Pint wide mouth milk, with swing stopper top, MacEwans Ltd (New Plymouth), JT & AH14 to rear, minor marks, 8/10



**276.** Goldfields Oil, 232mm tall, applied top, smooth base, fluted American pepper sauce, internal haze, body chip, Good 7.5/10



**271.** Utility, 148mm tall, 115mm diameter at base, green glass, free blown, food storage/utility jar with pontil with flared lip, some wear to base, minor marks Very Good 9/10



**277.** Goldfields Oil, 221mm tall, applied top smooth base embossed K, American pepper sauce gothic arch? light internal haze, minor marks, Very Good 8.5/10



**272.** Goldfields Pickle, 335mm tall, applied top, aqua, smooth base, large Gothic panels, minor marks, very impressive, Very Good 8.5/10



**278.** Goldfields Oil, 260mm tall, applied top, sand pontil, sharks tooth goldfields salad oil, lip bruise, internal haze, small bruise to middle ring, lower body ding with 20mm crack from it, Good 7/10



**273.** Chutney, 225mm tall, aqua, applied top, The Original Ship Brand Chutney, M P & Sons, great graphical image of a Sailing ship, lip chip & bruises, minor marks and scratches, Good 7.5/10



**279.** Goldfields Oil, 210mm tall, fluted salad oil all over dull, base edge chip, stress fractures in neck, Good 7/10



**274.** Goldfields Oil, 205mm tall, applied top, smooth base, pear goldfields salad oil, few light marks, Very Good 8.5/10



**280.** Goldfields Oil, 205m tall, deep aqua, applied top, Christmas tree shaped American pepper sauce, embossed to lower body, E R D & CO PATD FEB 17, 1874, embossed to base E R DURKEE & CO, wear to rim edge, internal haze, Very Good 7.5/10





**281.** Goldfields Pickle, very early, 220mm tall, Gothic Arch's, rim edge chip and ding/bruise, Very Good 7.5/10



**287.** Wally Silva, 190mm tall, hand painted vase, by Wally Silva, early Auckland potter, 19 stamped to base, hand painted and signed Ivy Williams, some minor paint wear, a few scratches, possibly needs a clean, Very Good 8/10



**282.** Crown Lynn, 250, tall, tan glazed, hot water bottle, attributed to Crown Lynn c1940's, (ref page 20 Crown Lynn A New Zealand Icon - Valerie Ringer Monk) with stopper, pinhead glaze chip to rim edge, small chip to thread on stopper, Very Good 9/10



**288.** Wally Silva, 180mm tall, hand painted vase, by Wally Silva, early Auckland potter, 20 stamped to base, hand painted and signed Ivy Williams, some minor paint wear, a few scratches, possibly needs a clean, Very Good 8/10



**283.** Hutson Pottery, 305mm diameter unmarked Bread Plate unmarked Hutson, embossed 'Give us this day our daily bread', with Scotch Thistle decoration, deep blue with white centre, minor marks, Very Good 9/10



**289.** Crown Lynn, 150mm x 75mm high, figural Lion, with rhubarb & brown tones, unmarked, has had front leg broken and reglued, Fair 5/10, Plus 170mm x 110mm high, Crown Lynn figural Lion, tan/cream colourway, end of tail has been broken & reglued Fair 6/10 (2)



**284.** Luke Adams, 210mm diameter, discoid vase, in the shape of a discus, small base 58mm dia, marked Luke Adams Sydenham Pottery Christchurch NZ, tiny base edge chip, Very rare shape, great colours, Very Good 9/10



**290.** Luke Adams, 105mm tall, small size, tan glazed Teapot, unmarked Luke Adams, Mint 10/10



**285.** Luke Adams, 205mm dia, colonial spittoon, with shell decoration, attributed to Luke Adams, tiny rim edge chip, Very Good 9/10



**291.** Luke Adams, 240mm tall, Luke Adams hunting jug, in dark tan glaze, unmarked, with modelled greyhound as handle, hunting scene in relief to sides, pencil marks to base indicating price drop from 25/0 to 22/6, light crazing, minor marks Very Good 9/10



**286.** Hutson, 300mm long from knob to knob, early greenish glazed stoneware footwarmer, possibly P Hutson (see page 116 Gail Henry New Zealand Pottery Commercial & Collectable), moulded decoration around end handles and bung hole, chip to bung hole, minor base edge chip, Very Good 8/10



**291A .** 670mm tall, unmarked Luke Adams Umbrella Stand, Majolica Honey Glaze with blue and brown tones, diamond shaped pattern, a large & small section of the rim edge have been broken off and restuck and repainted (poorly), also repainted to 2 small diamonds on mid body, hairlines off base edge, Fair 4/10





**292.** Homebush, 90mm tall, modelled Dog, glazed all over, unmarked Homebush Pottery, minor imperfections (in making), minor base edge chips, Very Good 7.5/10



**298.** NZ Potteries, 130mm tall, blue glaze jug, with original sticker to side of jug 'Manufactured by NZ Potteries 130 Adelaide Road Wellington', with made in NZ', and another sticker to base 'Mary gave me jug the first time we went to F A C Ma....? March 8th, 1938', Very Good 9/10



**293.** Benhar, 260mm x 190mm tall, pottery glazed elephant planter, Benhar Potteries (unmarked), underglaze chip to planter, manufacturing fault to inside of planter, 2 small hairlines, only visible inside of planter, light crazing, Very Good. 8/10



**299.** Luke Adams, 155mm tall, Jug with handle, honey tan colour, raised decoration, unmarked Luke Adams, crazing, Very Good 9/10



**294.** Luke Adams, 83mm tall (blue) 80mm (green), two small size glazed cream jugs in blue and green, unmarked Luke Adams, crazing Very Good both 9/10 (2)



**300.** Rancich, 80mm tall majolica glazed jug, Rancich Auckland to base, crazing, Very Good 8.5/10



**295.** Rancich, 100mm tall, wide bodied handled jug in green glaze, 'Made By J Rancich Auckland' stamp to base, small glaze chips to spout and base edge, tight hairline by spout, Good 7/10



**301.** Hutson, 130mm tall, unmarked P Hutson Wellington, lovely green glaze, small glaze chip to back side, crazing, Very Good 9/10



**296.** NZ Potteries, 145mm tall Grecian style 2 handled vase, unmarked NZ potteries, tan, cream glaze, several glaze bubbles, light scratches, Very Good 8.5/10



**302.** Fulford, 190mm tall to top of lid, tan glazed lidded barrel, unmarked Fulford Potteries, rim edge glaze chips, Very Good 7.5/10



**297.** Rancich, 50mm tall x 110mm dia, majolica glazed bowl 'Made Rancich NZ' to base, crazing, Very Good 9/10



**303.** Luke Adams, 150mm tall green glazed vase unmarked Luke Adams, with 3 Griffins, 30mm rim edge hairline, crazing, Rare colourway, Very Good 8/10



**304.** Temuka, 190mm tall green glazed long eared Hare, Temuka Ware stamp to the base, Very Good 9/10



**309.** Benhar, 130mm x 85mm stoneware pottery duck, unknown potter, possibly Benhar Very Good 9/10



**305.** Benhar, 70mm tall unmarked Benhar Potteries rabbit vase in tan glaze, Very Good 9/10



**310.** Temuka, 125mm tall figure of a gold miner, base marked Vitrified Porcelain Temuka NZ, possibly made for Otago's Centennial 1948, very rare and important piece from Temuka, minor marks, Very Good 9/10



**306.** Temuka, 235mm tall to top of lid, speckled tan glaze, 77 Temuka 240v 7a AC only impressed to base, missing screw holding lid to kettle, has element but no cord, not tested, Very Good 9/10



**310A.** Crown Lynn, 195mm high, vase, in a mauve & blue trickle glaze, impressed 90 to base, unmarked Crown Lynn, Very Good 9/10



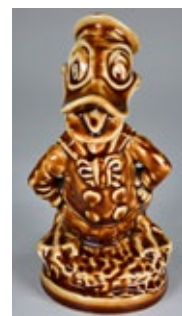
**307.** Crown Lynn, 200mm high, Crown Lynn trickle blue & tan glaze vase, impressed 85 and fraction marks to base, glazed over base chip and 2 small base edge chips, Very Good 8/10



**311.** Woodnorth? 150mm tall, rattan weave style decoration, 36 impressed to the base, minor marks, crazing, and 130mm tall, 48 impressed to the base, crazing, both Very Good 8/10 (2)



**308.** Crown Lynn, 260mm high Vase, stamped Crown Lynn New Zealand, impressed 667 to base, wear to top half of bands, overall crazing, Very Good 7.5/10



**312.** Temuka, 175mm tall, dark tan pottery figural of Sailor Duck, unmarked Temuka Ware, neck is broken and reglued (poorly), minor marks, Fair 5/10



**308A.** 290mm hand potted Daniel Steenstra vase in bright yellow, marked Crown Lynn New Zealand with Tiki Mark & Hand Potted, also impressed 16, a piece of the top has been broken and reglued, plus 35mm hairline from rim edge. Good 6/10



**313.** Crown Lynn, 280mm, Spaniel, marked to front right hand foot Crown Lynn New Zealand, partial mark, some crazing, Very Good 9/10



**314.** Crown Lynn, 215mm blue, red trickle glazed Vase, Made In NZ stamp and fraction marks to base, minor rim edge chip to base, 30mm hairline off rim edge, crazing, Good 7/10



**320.** Hutson, 205mm tall Hunting jug with dog figure handle and hunting scene in relief, unmarked, 2 average repairs to rim edge, and one repair on dog on the body, rim edge hairline, three minor chips/scuffs to high points on body, Good 7/10



**315.** Crown Lynn, 90mm tall baby Swan, in a rhubarb coloured glaze, with fraction marks to base, has had neck broken and reglued, small glaze fault to base edge, Displays well, Good 5.5/10e



**321.** Crown Lynn, 125mm tall modelled Kiwi bird, in pale green, fraction marks to base, tiny glaze chip to back of basket, Very Good 8.5/10



**316.** Amalgamated Potteries, 95mm tall dark brown jug, marked Amalgamated Potteries, minor rim wear, Very Good 9/10



**321A.** 535mm tall 2 piece P Hutson Garden Planter (unmarked) (we have seen an identical size and pattern in majolica with P Hutson marks), In a rich chocolate with a high gloss glaze, base is 300mm tall, several old glaze flakes to rim edge and base edge, top is 235mm tall top, has minor wear to rim edge, A stunning example of Hutson's work, Very Rare Very Good 8/10



**322.** Luke Adams, 345mm x 150 x 105mm tan glazed trough vase, stamped to base 'Luke Adams Sydenham Pottery Christchurch NZ', light crazing, 2 x 30mm tight hairline off rim edge, Very Good 7.5/10



**317.** Temuka, 175mm tall, cream pottery figural of Sailor Duck, marked Temuka Ware, Very Rare NZ pottery, minor chip to top bill, Very Good 8.5/10



**323.** Luke Adams, 135mm tall, green glazed Luke Adams basket, stamped 'Luke Adams Sydenham Pottery Christchurch', firing fault to inside of basket, light crazing. Very Good 8.5/10



**318.** 175mm tall, tan pottery figural of Donald Duck, made and marked Temuka Ware, minor fault to top of hat, Very Good 8.5/10



**324.** Woodnorth, 150mm tall, moulded Vase, majolica colouring, Impressed W to base, two average repairs to base edge chips and small repair to rim edge, light crazing. Good 7/10



**319.** O C Stephens, 210mm x 140mm variegated blue glazed bowl, marked O C Stephens Dunedin NZ and also has impressed M. Jarvis (Mary Jarvis) several firing faults, Very Good 8/10



**325.** Luke Adams, 155mm x 90mm x 60mm, tan coloured Pine Cone wall pocket, minor base edge chip, Very Good 8.5/10





**326.** Crown Lynn, 70mm tall Rabbit holding basket, impressed 164 to base, has original sticker, light crazing, Very Good



**331.** Crown Lynn, 120mm modelled Scotty Dog in Rhubarb & tan trickle glaze, fraction marks to base, chip to one ear, Good 7/10



**327.** Temuka, 170mm tall, cobalt blue lidded Tobacco Jar, impressed Temuka Ware marks to base, designed by A R Topliss circa 1935, small chip to base edge on lid, pin head chips to rim edge, minor marks and scratches, Very Good 9/10



**332.** Benhar, 85mm tall Elephant, hand painted yellow over bisque body, unmarked Benhar Pottery, minor marks, Very Good 8/10



**327A.** 190mm tall, mottled green glaze, unmarked Timaru Potteries Storage crock with lid, base edge chip, Very Good 8.5/10



**333.** Christchurch Brick, 195mm tall, handled jug, 'Christchurch Brick Co Limited' stamp to base, small lip chip, rim edge fracture, minor base edge chip, Good 7/10



**328.** Temuka, 175mm tall, very fancy designed Temuka Ware Tea Pot, trickle style glazing with frilled rim, designed by Lovatt 1951-1964, intended as Christmas gifts for dignitaries and premium retail outlets, Mint 10/10



**334.** Woodnorth, 100mm tall, hanging basket with banded greens/browns with shell decoration to rim, impressed W 5 (Woodnorth) to base, Very Good 9/10



**329.** Luke Adams, 210mm x 85mm x 170mm to top of lid, unmarked Luke Adams teapot, fine crazing, glazed over chip to spout, minor spout edge chips, old dirty cracks to teapot lid. Very Good 7/10



**335.** Titian Studio, 128mm glazed character jug, 'Wahine' impressed to the upper back, impressed Titian Studio S106 to base, crazing, small glaze miss to base edge, Very Good 8.5/10



**330.** Luke Adams, 180mm to top of lid, Teapot glazed with cane & ribbon decoration, Unmarked, minor marks, Very Good 8.5/10



**336.** 95mm tall Vase rhubarb with green speckles, 134 to base, excellent condition, 9.5/10 and 98mm tall Vase, sage green with rhubarb patches vase, 39 and fraction marks to base, excellent condition 9.5/10 (2)



**337.** Benhar 100mm tall, tan Bonzo dog, unmarked Benhar pottery, medium chip to underside of base, crazing, Very Good 7.5/10



**343.** Crown Lynn, 300mm x 90mm x 55mm Trough vase in blue tan with vertical band relief pattern, 74 and fraction marks to base, Very Good 9/10



**338.** Benhar, 80mm tan Pig posy vase, small glaze chip to front leg, hairline behind the left ear and a small rub to left ear, unmarked Benhar pottery, Very Good 8/10



**344.** Crown Lynn, 105mm x 250mm Standing Fawn, impressed '189' to base, in a lustrous black tan glaze, minor firing fault to underside of tail, Very Good 8.5/10



**339.** Mollee, 310mm x 135mm x 55mm green glazed bowl with 5 toadstools to centre, impressed 'Mollee' to base, Very Good 9.5/10



**345.** Crown Lynn, 230mm tall trickle glaze Vase in honey amber colour, early 'Made In NZ' mark to base along with fraction marks, crazing, minor marks, Very Good 8.5/10



**340.** Crown Lynn, Christchurch Downtown duo, cup saucer, black cup marked New Zealand, saucer has street map of Christchurch, marked Downtown Permanent Colours, Christchurch Pat. No.452 to rear, light crazing, Very Good 9/10e



**346.** Crown Lynn, 155mm tall, small size Ti Toki bottle in banded green, screw top, unmarked, Very Good small glaze chip to one tongue, Very Good 8/10



**341.** Titian, 150mm tall leaping brown trout, on wave form base, naturalistically painted in colours, impressed 'Titian Studio F107', lower body of fish broken and reglued, small firing fault to one fin, Fair 5/10



**347.** O C Stephens, 60mm tall, 2 handled Mug stamped 'O C Stephens Hand Painted' to base., has 2 crudely drawn deer with very long antlers, crazing, Very Good 9/10



**342.** Kelston, 128mm tall vase with white glaze flared top on 4 feet, minor staining and scratch marks on inside, tiny pinhead mark on inside rim, Kelston potteries base stamp, Very Good 8.5/10



**348.** Rancich 70mm tall, yellow/blue/green streaky glaze Ovoid Vase impressed 'J Rancich Auckland NZ', fine crazing, Very Good 8/10



**349.** Mollee, 340mm x 110mm x 454mm green glazed bowl with 4 toadstools to right hand side, impressed 'Mollee' to base, minor base edge flea bite to right side, minor wear to red paint on toadstools, Very Good 9/10



**355.** Boyd, 137mm diameter, Aboriginal scene plate, marked Martin Boyd Australia, Very Good 9/10



**350.** Crown Lynn, 275mm tall cylindrical Jug with handle, 'Made In NZ' stamp and fraction marks to base, light crazing, Very Good 9/10



**355A.** Colonial, 250mm tall x 370mm wide (handle to spout), early Colonial pottery, maker unknown, minor underside base edge of lid has a chip, VG 9.5/10



**351.** Crown Lynn, 275mm tall, trickle glazed jug vase in cream green glaze, early 'Made In NZ' mark to base along with fraction marks, dirty crazing, minor marks, Very Good 7.5/10



**356.** Butter Crock, 205mm tall, 2 tone stoneware pot, transferred Macsymom & Compy Argyle Street Greenock, central pictorial trade mark within buckled belt. 6LB to rear, no lid, minor potstone & minor base chip, Very Good 9/10



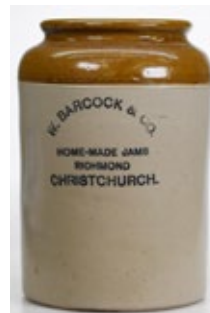
**352.** Titian, 180mm x 190mm, Titian wall pocket, impressed 'Titian Studio WV-104' to base, light crazing, Very Good 9/10



**357.** Poison, 250mm tall, 2 tone stoneware pot, McDougall's Arsenate of Lead Paste (Poison) Manchester, Stiff Lambeth potters mark, small hairline to rear, Very Good 8.5/10



**353.** Mollee, 250mm x 95mm x 80mm tall, grey bowl with 4 toadstools to front, Impressed 'Mollee' to base, Very Good but needs a wash, 8.5/10



**358.** Household, 215mm tall, 2 tone stoneware, W Barcock & Co Home Made Jams Richmond Christchurch, no potter, minor base edge chip, light crazing, Very Good 9.5/10



**354.** Boyd, 265mm diameter, Aboriginal scene plate, marked Martin Boyd Australia and the initials JR on the base, light crazing, Very Good 9/10



**359.** Household, 115mm tall, 2 tone stoneware pot, YCC, Mixed Pickles, Young's Mfg Company, Best English Make impressed to lower rear, Very Good 9/10





**360.** Household, 115mm tall, 2 tone stoneware pot, YCC Onions, Young's Mfg Company, Best English Make impressed to lower rear, 3 base edge chips, glaze chip to rim, Good 6.5/10



**361.** Household, 115mm tall, 2 tone stoneware pot, YCC Chow Chow, Young's Mfg Company, Best English Make impressed to lower rear, large chip to underside base, glaze stress marks to right hand side, Good 7/10



**362.** Household, 115mm tall, 2 tone stoneware pot, YCC Piccalilli, Young's Mfg Company, Best English Make impressed to lower rear, Very Good 9/10



**363.** 210mm tall, The Adaptable Hot Water Bottle & Bed Warmer, made at the old Fulham Pottery, Boots Chemist to the rear, with stopper, shrinkage marks to handle holes, inner rim edge nick, Very Good 7.5



**364.** Stoneware, 215mm tall, Boots Chemist Radiant Hot Water Bottle, British Made, with stopper, Very Good 9/10



**365.** 265mm tall, The Bungalow Footwarmer, Denby Stoneware, Charles Brothers Ironmongers Doncaster, instructions and letter M to base, with stopper, rip to canvas handle, 130mm hairline to rhs, Good 7/10



**366.** Stoneware, 120mm tall, 2 tone stoneware crock, Maypole Dairy Co Ltd, handle to rear, 2Lb impressed below handle, minor inner rim nibble, Very Good 8.5/10



**366A.** Cream Pots, 110mm tall, all white, Galloway Creamery Co Ltd Stranraer, indistinct potters mark, crazing, patch of rust, small potstone to rim edge Very Good 8/10, Plus 100mm tan top, Excelsior Dairy Co Lincoln, stone handle, Port Dundas potters mark, staining, Good 6.5/10, Plus 100mm tall, Dumfriesshire Dairy Co Edinburgh and the Creamery Lockerbie, no potters mark, crack to upper body and rim, stained 6/10 (3)



**366B.** Cream Pots, 102mm tall, Provincial Dairies Limited Leeds, stone handle, no potters mark, Very Good 9/10, Plus 108mm tall, Buttercup cream, blue top and transfer, Very Good 9.5/10 (2)



**366C.** Cream Pots, 103mm tall, Mobblerley Creamery Henry Fildes Port Dundas potters mark, rust mark to base, Very Good 9/10, Plus 100mm blue top and print, Pure Fresh Cream Buttercup Dairy Co, glaze stress crack, right hand side, kiln kiss, minor marks, Very Good 8.5/10 (2)



**366D.** Cream Pots, 75mm tall Woodlands Ltd. Rich Cream, no potters mark, Very Good 9/10, Plus 90mm tall, tan top, J E Bannister Huddersfield Dairies, no potters mark, stone handle, light crazing, minor marks, Very Good 8.5/10 (2)



**366E.** Cream Pots, 97mm tall, The Professional & Civil Service Supply Association Limited, no potters mark, potstone to rear, Very Good 8.5/10, Plus 95mm tall, tan top, CWS Ltd Brislington Somerset, no potters mark, crazing, Very Good 8/10 (2)



**366F.** Cream Pots, 2 x Cooper & Co's Glasgow, Liverpool & London, 105mm tall kiln kiss, Very Good 8.5/10, Plus 105mm tall, Very Good 9/10 (2)



**370.** Stoneware, 220mm tall, The Modern Gerst Brewing Co Old Jug Lager, Fully matured A Veritable Luxury, Nashville, Tenn U S A, tiny fleabite rim edge chip, dirty crazing, Very Good 8/10



**366G.** Cream Pots, 95mm tall, G Webster & Son Provision Merchants, Halifax & Hipperholme, stone handle, no potters mark, Very Good 9.5/10, Plus 103mm tall blue top & print, Golden Pastures Somerset Dorset & Devon Dairy Co. Price Bristol potters mark, Very Good 9.5/10 (2)



**371.** Household, 115mm tall, 2 tone stoneware pot, YCC Mixed Pickles, Young's Mfg Company, 2 tiny glaze flakes to shoulder, Very Good 9/10



**366H.** Cream Pots, 123mm tall, Cooper & Co Furniture Polish, Glasgow, Liverpool & London, no potters mark, minor rust marks, Very Good 9/10, Plus 130mm tall, Horner's Devonshire Clotted Cream, no potters mark, staining, crazing, underside base hairline, Good 7/10 (2)



**372.** Household, 90mm x 95mm stoneware pot marked Cockatoo Preserves Ltd Jams and Sauces Collingwood Victoria Australia Homemade 1lb net, 2 small potstones, Very Good 8.5/10



**367.** Stoneware, 265mm tall, The Christian Moerlein Brewing Co Cincinnati O. Moerleins Old Jug Lager, with Cherubs, Port Dundas potters mark, lip glaze nibble, small potstone to rear, Very Good 8.5/10



**373.** Stoneware, 190mm tall, early English salt glazed stoneware handled Jug, moulded figures in relief, no potters mark, hairlines to mid-section of body have been retouched, Fair 6/10



**368.** Stoneware, 220mm tall, The Christian Moerlein Brewing Co Cincinnati O. Moerleins Old Jug Lager, with Cherubs, Port Dundas potters mark, base edge chip, glazed over base edge chip, spotty glaze, Very Good 8.0/10



**374.** Household, 130mm tall to top of lid, Stilester, Finest Quality Blue Stilton, John Barker & Co Ltd Kensington W, Bourne Denby Potters mark, J stamped to base & lid base, Very Good 9/10



**369.** Stoneware, 210mm tall, The Grasser & Brand Brewing Co Toledo O extra quality xxx Pilsener Jug Lager, no potters marks, light crazing, Very Good 9/10ze



**375.** Potlid, Mort328a, 104mm diameter, multi coloured Pratt lid, The Village Wedding, Teniers Pinx J A, tiny base edge scrape, light crazing, with base, crazing, light staining, Very Good 8/10





**376.** Potlid, Mort56c, 104mm diameter, multi coloured Pratt lid, A pretty kettle of fish, heavy crazing, staining, crack only visible underneath, two filled in chips to base edge rim, with base, crazing, staining, flange edge bruise, Fair 6/10



**382.** Pottery, 215mm Art Nouveau style ewer vase, indistinct Belgian potters mark and numbers, 2 rim edge chips, crazing (dirty on the inside) Good 7/10



**377.** Potlid, Mort197a, 104mm diameter, multi coloured Pratt lid Uncle Toby, small flange edge glaze chip, base has crazing and some staining, Good 7.5/10



**383.** Stour Ware, 103mm tall, miniature stoneware jar, New Club Hotel Kaikoura Ben Dooley Proprietor, Stour Ware Timaru potter, Very Rare item, Very Good 9/10



**378.** Potlid, Mort68b, 106mm diameter, multi coloured Pratt lid, The Shrimpers, crazing, some staining, repairs to base edge rim, minor chip to flange edge, Good 7/10



**384.** , 4 travellers' samples, all marked Stour Ware Timaru, left to right, 80mm tall, two tone with lid, potstone under rim edge, Very Good 9/10, Plus 92mm tall two tone Very Good 9.5/10, Plus 100mm tall, glossy glazed stoneware bird feeder, minor marks, Very Good 9/10, Plus 40mm tan potty, Very Good 9/10 (4)



**379.** Potlid, Mort325, 104mm diameter, multi coloured Pratt lid, IL Penseroso minor marks, Very Good 9/10



**385.** Pratt Pots, Mort168, 105mm diameter, multi coloured pratt pot, The late Prince Consort, Very Good 9/10, Plus Mort171 105mm tall, Prince of Wales and Princess Alexandra, light staining underneath, light crazing, Very Good 8.5/10 (2)



**380.** Potlid, Mort124a 104mm diameter, multi coloured Pratt lid, The Rivals, light crazing, Very Good 9/10



**386.** Chinese, 100mm dia x 60mm tall, tan/cream ceramic Chinese money box, Chinese symbols and coin slot to the top, Very Good 9/10



**381.** Stoneware, 225mm tall, early Mortlake salt glazed jug, moulded figures in relief, base edge chips, Good 6/10



**387.** Chinese, 120mm tall x 130mm dia, green glaze Chinese small size teapot c1860's -1870's, wear to glaze on one side, small potstone, Very Good 8/10





**387A.** Chinese, 136mm tall, clear glass spun top, Chinese characters on front panel and base, minor marks Very Good 9/10, Plus 18 bottles, 63mm tall, clear glass, Tien Sau Tong Hong Kong, Chinese characters on 2 panels, small rim edge chip on one, bruise on another, a few minor marks, otherwise Very Good 8.5/10 (19)



**391.** Ephemera, Beer & Aerated Water labels, 22 in total from 8 NZ soft drink companies, Lester's Levin, Chittock Timaru, Holder Marton, Hutt Aerated Waters, Goodwin & Davey Hawera, Ern Renolds & Son Westport, West & Co Dunedin, Thomson Lewis Wellington, Robt Ford Hokitika, Harley & Sons Nelson, Cooke & Co Auckland, Powley Dunedin, all VG 9/10 (22)



**388.** Household, 150mm tall 2 tone jug with handle, Cadbury with a Cocoa tree, c1920's, jug bears the Cadbury logo, which was in use in that time, no potter, fine crazing, Good 7/10



**392.** Shipping, 5 items of china, 90mm tall, NZS Co ashtray and holder, ashtray top separates from base, no potter, green felt on base, crazing, light staining, Very Good 8/10, Plus 65mm tall cup, NZ Battle Cruiser The New Zealand, Ashley 155 to base, rim edge chip, 7.5/10 Plus, 70mm tall 2 different USS Co cups, both have Foley Bone China to base, blue print Very Good 9/10, green print rim edge wear, minor marks, Very Good 8/10, Plus 55mm tall cup MV Maui Pomare, no maker, Very Good 9/10 (5)



**389.** Household 205mm tall x 160mm square, glass jar with metal lid, etched into two sides, 'Pep O Pats' and has 'Aulsebrook's' on the metal lid. Glass jar in excellent condition, some wear and bubbling on lid, Very Good 8.5/10



**393.** Household, 70mm tall, ceramic Pie Funnel, printed 'DIC Dunedin' to one side and 'Patent Rosebud Pie Funnel Grimwades Ltd Stoke on Trent' to rear, light staining/crazing & large 35mm crack to rear, Good 6.5/10



**389A.** 220mm tall to top of stopper, clear glass lidded jar, with glass label, marked Glycerine Jujubes, part label to reverse, Saluzzi Italy and small separate label, Finest Calabrian Licorice, several outer rim edge chips, crack to glass Glycerine Very Good, 7/10



**394.** Advertising, 115mm tall, brass change tray J A J Nolet Celebrated Aromatic Schiedam Schnapps, & fine old Geneva, dints, dirty, Good 7.5/10



**390.** Household, 315mm wide free blown glass rolling pin in purple/amethyst colour, one end is open, has some internal dust/dirt, Very Good 8/10



**395.** Advertising, 140mm tall, 2 tone stoneware water jug, 'Say Ballin Bros Sarsaparilla no one can pass us', Price 15 Bristol potters mark to rear, minor marks, Very Good 9/10



**390A.** Apothecary, 220mm long, cast iron, Kenrick & Sons No. 6 Cork Crimper/Press, moulded decoration, marked underneath - Kenrick Sons No. 6 .... and No. 6 on the underside of the upper arm, age related wear, rust marks, Very Good 8/10



**396.** Advertising, 140mm tall, John Gold & Sons Jug, transfer print 'With the compliments of John Gold & Sons Aerated Water Manufacturers & Bakers Balclutha & Milton Awarded 30 medals', Price Bristol potter, minor rim edge chip, potstone to O in Gold, Very Good 7.5/10



**397.** Advertising, 170mm tall, two tone with blue top handled stoneware jug, printed 'Drink & Enjoy Moffetts Cordials', Price Bristol potters mark, rim edge chips, Good 7/10



**402.** Advertising, ceramic cup 78mm tall & saucer 150mm dia, printed in blue 'NZ RLY. Refreshment Rooms' cup & saucer in belt buckle transfer, Maddock England maker to base, minor marks to saucer, 2 60mm/75mm cracks to cup & small spots of stain to body Good 7/10



**398.** Advertising, 140mm tall green top stoneware jug, printed 'T West & Co Dunedin water jug, transferred T. West & Co Regd. trade mark, Hop Beer, Ginger beer, Maoriland Cider, Dunedin', Price Bristol potter, rim edge chips that have been re-touched, small crack near spout, small glaze miss on handle, minor marks, Good 7/10



**403.** Household, 215mm high x 220mm diameter at top, waxed cardboard, 'Whipped Butter', red print on white, rim edge dirty, Good 8/10



**399.** Advertising, 145mm tall, clear glass jug with red print, 'Call for Dunedin Brewery Co Draft Ale the best', small crack to top of handle, Good 7/10



**404.** Tobacco, large 3 lbs tobacco tin, in red and blue, Cut Plug, ready for the pipe its toasted tobacco, No. 10 full strength rich & mello, pictorial bulls head, some fading to red, body scratches, Good 7/10



**400.** Advertising, 3 different Air New Zealand miniature Whisky bottles, made by Cerographics Auckland, they were filled with 50ml of Port Nicholson NZ Whisky, introduced 1985 gone by 1986, highly sought after collectables, 2 x J E Hill Manukau Cycle Works, plus J R Hope Butcher, the JR Hope has a plain back and base and a glaze fault to the lid, the Hill both have rear markings and Air New Zealand on base, Very Good 9/10 (3)



**405.** Bottle Openers, 32 in total including Speights, Timaru Ales, NZ Breweries, Lion Beer, McGavins / Strachan's, Thomsons, Lanes, Contract Bottlers Limited, J Lindsay & Co, Crown Cork, Wains Hotel Dunedin, Blyth's Garage Winton etc, wear, rust patches on some, Good 7/10 (32)



**401.** Advertising, 77mm tall ceramic cup, printed in blue 'NZ Rly Refreshment Rooms cup, 7', (Taihape), in a belt buckle with handle, Maddock England Vitrified Hotel Ware to base, light rust marks, Very Good 8/10e



**406.** Brewery, 260mm diameter, wooden end from beer barrel, painted Southland Breweries Ltd Ingill, full of borer, which has taken a piece out, Fair 5/10



**401A.** TWYFORD'S VITROMANT SANITARYWARE ADVERTISING ASHTRAY 148mm wide, white china ashtray, Sample of Twyford's "Vitromant" Sanitaryware to both edges, details of bathroom showing pedestal handbasin and bath, Twyford's Ltd Hanley England to base, light crazing, Very Good 9/10



**407.** Toys, 115mm x 75mm x 40mm, in original boxes, NBK Product, Electric Outboard Motor, Powerful Hi-Speed 3 to 9 volts D.C. minor paint loss, missing one screw, Very Good 7.5/10 Plus 145mm x 75mm x 45mm boxed Speed Motor Out Board Motor Sakai Seisakusho Ltd, minor marks 9/10 (2)



**408.** Household, 4 items for Creamoata, 2 different Pint advertising milk bottles, 'Creamoata Cream of the Oat the National Breakfast', bottle on left has minor lip chips, minor marks/wear Good 7.5/10, Plus the right side (smaller transfer) is Very Good 8.5/10, Plus flattened sample packet 143mm x 115mm minor marks, Very Good 8.5/10, Plus flattened 3lb 4oz box, 340mm x 220mm, Very Good 9/10 (4)



**413.** Advertising, 110mm tall, silver plated cup, marked 'Currie's Hotel', Paramount Plate, best EPNS quality plate, Warranted Hard Soldered to base, possible Connection to the Douglas Hotel in the Octagon in Dunedin, also Papers Past references to the Catlins South Otago, tarnished, light wear, Good 7/10



**409.** Household, 115mm tall x 190mm dia, white ceramic bowl, 3Lb nett, Anthony Hordern & Sons Limited Sydney, no potters mark, inside and base has staining, Very Good 7/10



**414.** Household, 330mm tall, cast iron moulded based with blue glass fuel lamp, no chimney, RD No 449860 to underside of base, Very Good 8.5/10



**410.** Household, 115mm tall x 190mm dia, ceramic white pudding bowl, 'The Lords Mayor's Pudding Basin' with directions, no potters mark, inside and base has staining, crazing, Very Good 7/10



**415.** Household, 285mm tall, glass kerosene finger lamp, in milk/cranberry colour, with clear glass applied handle, pontil to base, Very Good 9/10



**411.** Money Box, 155mm tall, cast aluminium, 'Greedy Nigger Boy', HCU Ltd ChCh makers marks, paint loss/wear scratches, one screw missing from base plate, Good 7.5/10



**416.** China, 200mm tall, Guardsman jug, Burleigh Ware Burslem England mark to base, this is a later issue jug bought out around c2000, it features four English guardsmen in Beefeaters marching, Mint 10/10



**412.** Money Box, 155mm tall, cast aluminium, Greedy Nigger Boy, HCU Ltd ChCh makers marks, paint loss/wear scratches, only one screw to base plate, Good 7/10



**417.** Advertising, 165mm tall to top of lid, china Coffee Pot for 'Great Western Hotel', Southern China made in England to base, minor inner chip to spout, Very Good 8.5/10



**412A.** 165mm tall, original cast iron money bank, Jolly Nigger Bank embossed to rear, paint loss, light rust, Very Good 7.5/10



**418.** Exhibition, 70mm tall Enamelware white with blue trim mug, Souvenir of NZ Exhibition Christchurch 1906-7, base edge chips, rust marks, Good 7/10





**419.** Exhibition, 65mm tall china cup, 'New Zealand International Exhibition Christchurch New Zealand 1906-07 Haeremai', on reverse a map of New Zealand with similar wording, no makers marks, 50mm hairline to right side, wear to gold band, Good 7/10



**426.** CABC\_101, 8 x Pyro ceramic 26oz crown tops for Crystal Flavoured Beverage, 750ml, Crystal Bottling Co Ltd Christchurch & Oamaru, 4 bottles with contents, 4 empty, Crown caps are rusty and hard to read, Very Good 8/10 (8)



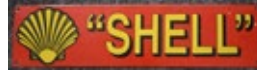
**420.** Social History, 100mm dia x 93mm tall, large handled mug, Lord Brougham and Vaux, Lord High Chancellor to one side and 'Reform' to other, C & R mark to base, rim edge chips and 75mm crack with staining, crazing & base edge chips, Fair 5/10



**427.** Advertising, 1220 x 480mm enamel Sign for Aulsebrook's in black and off white, chipping, dings to outer edges and main body, needs a Good clean, 7.5/10



**421.** Wooden soda syphon crate for 'D J Malone & Co Ltd, Stratford' on all 4 sides, British Syphon Co Ltd London England to both ends, rust in tie down wire, which has been cut off down the sides of crate, base has been re-nailed? Good 7/10



**428.** Advertising, 610mm X 150mm Enamel sign, SHELL with the Shell Logo, reproduction enamel sign, one chip to enamel, Very Good 9.5/10



**422.** Wooden soda syphon crate for 'T B & Co Ltd New Plymouth' on all 4 sides, Soda Syphon crate, some damage to wood in dovetails, rust in tie down wire which has been cut off down sides of crate, base has been re-nailed? Good 6.5/10



**429.** Advertising, 610mm X 150mm enamel sign, Ocean Fire. (Insurance company) some damage to right hand edge, Very Good 8/10



**423.** Automobilia, 520mm x 365mm x 260mm wooden oil boxes, 'Big Tree Motor Spirit' A S Patterson & Co Ltd to both ends, some borer holes, some staining on one end, 7/10



**430.** Advertising, 380mm x 255mm enamel sign, 'Local Agency Eagle Star Insurance Co Ltd Inc In England Fire', Neeco Signs maker, very minor marks, Excellent 9.5/10



**425.** Extra-large wooden double sized Soda Syphon box (holds 12 Syphons) For 'Ern Reynolds Westport', with 6 Ern Reynolds Syphons, 3 x Syphon 595 Regent, 2 x Syphon 596 (St James) and one Syphon 594 (York) 5 correct tops, one Cliff Thomas top, rust in tie down wire which has been cut off down sides of crate, borer holes, some damage to base, Good 7/10



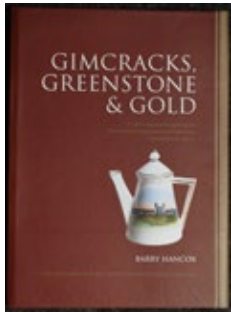
**431.** Advertising, 510mm x 260mm stand up sign for Creamoata Cream O' the Oat, it's the national breakfast, made by Chandler NZ Ltd Litho Copyright, marks across the centre, wear to corners, scratch over man's hat, Good 7/10



**431A.** 480mm X 730mm heavy cardboard stand up sign for Creamoata The cream of the Oat, The National Breakfast. Chandler Ltd Litho maker. Minor marks, wear, small piece missing, top right hand side, Very good 7.5/10



**432.** Advertising, 530mm X 390mm 1916 calendar, E. Rowse General Grocer Sunnydale Store Breezes Road (Christchurch) with a picture titled 'The Night March', new frame original calendar, light marks on the frame, Very Good 9/10



**433.** Reference Book, Hard back publication by Barry Hancox, covering the 1906-7 International Exhibition held in Hagley Park Christchurch, 256 pages, many full colour illustrations, Very Good near new 9.5/10



**434.** Reference Books, Collection of reference books, Samuel Kirkpatrick & Co Ltd, Nelson - Rob Packer and Kevin Grant, Plus Pictorial Guide to collecting New Zealand Ginger Beers, - Bruce Baldwin ( first edition), Plus Collecting Postcards in colour- Valerie Monahan, Plus Antique Bottles and containers of Christchurch and District - Bill Donaldson, Graham Hume and Steve Costello, Plus A Catalogue of Christchurch and District Aerated Water Bottles - Bill Donaldson and Warren Roberts, Plus The Story of Beer and Brewing a New Zealand History - Gordon McLauchlan , Plus NZ Hair Restorers & Renewers - Lindsay Jukes. All in well used condition (7)







**KIWI AUCTIONS LTD**

106B Harpers Road, RD 2, Kaiapoi 7692, New Zealand

Telephone (NZ only) 0800 782 584

Telephone: (intl) +64 21 944 759

Web [www.kiwiauctions.co.nz](http://www.kiwiauctions.co.nz)

Email: [info@kiwiauctions.co.nz](mailto:info@kiwiauctions.co.nz)