

## Presents an Absentee / Timed Auction of

# New Zealand Toys

Auction starts **Saturday 22<sup>th</sup> November** from **6.00pm**,  
and starts to close **Saturday 6<sup>th</sup> December** from **6.00pm**

**KIWI AUCTIONS LTD**

106B Harpers Road, RD 2, Kaiapoi 7692, New Zealand

Telephone (NZ only) 0800 782 584

Telephone: (intl) +64 27 270 7410

Web [www.kiwiauctions.co.nz](http://www.kiwiauctions.co.nz)

Email: [info@kiwiauctions.co.nz](mailto:info@kiwiauctions.co.nz)

## **General**

### **1. Definition**

In these terms of business:

Kiwi Auctions Limited is referred to as 'KA'.

The KA representative conducting the auction is referred to as the 'auctioneer'.

### **2. Attribution and Condition of Lots**

We make every effort to ensure the accuracy of any statement as to authorship, attribution, origin, date, age, provenance, and condition of any lot, whether or not Any statement made orally or in the catalogue is an opinion given after careful consideration and research.

Written condition reports are available upon request for buyers unable to attend viewing in person.

When bidding, you acknowledge that you are fully satisfied as to the attribution and condition of the lot.

### **3. Third Party Liability**

Every person on KA premises before, during or after a sale shall be deemed to be there at their own risk and shall have no claim against KA in respect of any injury they may sustain or any accident which may occur.

### **4. Disputes**

Any dispute not covered in these terms of business will be settled at the sole discretion of KA.

### **5. The Seller**

a. KA sell as agents for the seller (Vendor).

b. KA reserve the right to fix a reserve price for any lot.

c. Payment we aim to pay you no later than 28 working days after the auction.

We do not pay interest on the period between your buyer's payment and your receipt of the payment.

We act as agents and cannot be held responsible if your buyer does not pay. We cannot pay you until we have received cleared funds.

### **6. The Buyer**

The highest bidder acknowledged as such by the auctioneer will be the buyer. If any dispute arises, the auctioneer has absolute discretion to settle the matter.

The auctioneer rules the bidding and bids cannot be retracted. The auctioneer reserves the right to refuse any bid.

The successful bidder, whether bidding for himself or for a third party, is entirely responsible for paying for the lots they have bought in accordance with KA terms of business.

The auctioneer reserves the right to bid on behalf of the vendors for any lot and to withdraw, consolidate or divide any lot or lots.

### **7. Registration**

Prospective buyers need to register with us, giving their full name, address, contact telephone number(s) and email address. First time buyers will be required to provide proof of identity (i.e., driving licence/passport), a valid debit or credit card. Upon receipt of the above a buyer number will be issued, which is only valid for the current sale. This card may be used to indicate your bids to the Auctioneer during the sale. If successful, the bidder must ensure that their number can be seen by the Auctioneer and that it is their number that is called out. Should there be any doubts as to price or buyer, please draw the Auctioneer's attention to it immediately.

### **8. Buyer's Premium**

You will pay a premium of 15% plus GST on the hammer price of your purchase on each lot.

GST is calculated at the rates that apply on the day of the auction.

### **9. Payment**

Buyers must pay in full before their purchases can be released to them.

Payment Methods

We accept payment by:

- Cash
- Debit card
- PayPal Please note a charge of 5% needs to be added to PayPal payments.
- Credit card Visa & Mastercard only, not American Express or Diners Club.
- Bank transfer to:

Kiwi Auctions Ltd

Account no. 03 0823 0044485 00

Account name Kiwi Auctions Ltd

### **10. Internet Bidding**

Live online bidding at selected auctions is now available, please see website for details

### **11. Ownership of Purchases**

Ownership of lot(s) purchased will not pass to the buyer until they have paid KA in full, and KA has applied the payment to the lot.

### **12. Transfer of Risk**

Each lot is the buyer's sole responsibility from the fall of the hammer and is sold with all faults and imperfections.

KA is not responsible for the correct description, genuineness or authenticity of any lot and makes no warranty whatsoever.

The buyer is deemed to have inspected each lot and satisfied himself as to its condition.

Written condition reports are available upon request for buyers unable to attend viewing in person. We are unable to offer comprehensive condition reports on low value lots comprising multiple items. Refunds cannot be given with regards to condition on items purchased by buyers who have viewed their purchased lots. Refunds will only be considered if a written condition report has been issued and the description of condition is not as described.

### **13. Commission Absentee Bids**

If instructed, KA will execute bids and advise prospective buyers.

Buyers who cannot come to a sale may leave their bid with our staff after viewing or make their bid in advance by telephone or email. Such bids are placed at the buyer's own risk.

Bids must be made at least one hour before the sale starts, and we advise buyers to make bids within one hour of the close of the view day.

When making bids, buyers must provide:

- Their full name
- Address
- Email address
- Contact telephone numbers
- The number of the lot they wish to buy
- Their maximum bid amount – excluding commission which will be added to the invoice afterwards.

We will ensure that lots are bought as cheaply as possible depending on the bids made and other reserves. If identical bids are placed, the person who bid first will take precedence.

### **14. Telephone Bids**

Requests for telephone bidding must be registered one hour prior to the close of the view day. Lines are booked on a first come first served basis.

Full name, address and telephone numbers will be required together with proof of identity and address. Bank and credit/debit card details are also necessary.

### **15. Absentee Bidding**

Whilst every effort is made to execute absentee bidding, KA cannot be held responsible for any default or neglect in connection with this service.

All such arrangements are made entirely at the prospective buyer's risk.



**1. TRI-ANG MINIC SERIES 3 ARTIC PANTECHNICON, PG38/3144**

365mm long, cream/green pressed steel, Tri-ang Minic Series 3, PG38/3144 Artic Pantehnicon, Tri-ang Removal Service stickers to both sides, Push N Go in working order, coupling is working, minor surface rust, minor paint loss/wear, Very Good 8.5/10



**5. TRI-ANG EARTH MOVING HI LOADER**

340mm long, yellow pressed steel, rubber tyres, Tri-ang Earth Moving Series Hi Loader, model 40790, bucket mechanism partially working, engine & exhaust missing, surface rust, paint loss, wear, Good 6/10



**2. TRI-ANG MINIC SERIES 3 ARTICULATED TRANSPORT LORRY, PG33**

295mm long, red/green pressed steel, Tri-ang Minic Series 3, Articulated Transport Lorry, coupling mechanism incomplete, minor surface rust, minor paint loss/wear, Very Good 7/10



**6. TRI-ANG DIESEL CRASH TRUCK**

430mm long, red/yellow pressed steel, Tri-ang Diesel Series Crash Truck, Tri-ang Breakdown Service to both sides, includes tools in the tool box which is rare, Made in New Zealand sticker, pictured in book, Toys of Road Vehicles Made in New Zealand, Carville Stewart, page 246, minor surface rust, paint loss/wear, minor dints, Good 7.5/10



**3. TRI-ANG MINIC SERIES 3 HEAVY DUTY CRASH TRUCK PG35**

215mm long, cream/orange pressed steel, Tri-ang Minic Series 3, Heavy Duty Crash truck, PG 35, Push N Go mechanism partially working, no bulb and not tested, minor surface rust, minor paint loss/wear, Very Good 8.5/10



**7. TRI-ANG TRANSPORT VAN No. 200**

460mm long, red/white pressed steel, Triang Transport Van No. 200, (6517), original stickers to sides, made In New Zealand sticker to roof, minor surface, minor marks, Very Good 8.5/10



**8. TRI-ANG JUNIOR SERIES MILK LORRY**

340mm long, white with red tray pressed steel Tri-ang Junior Series, Milk Lorry, missing one lid off the milk cans, Tri-ang stickers to doors light surface rust, paint loss/wear, Very Good 8/10



**4. TRI-ANG JUNIOR SERIES TRANSPORT LORRY**

370mm, long blue/white pressed steel Tri-ang Junior Series Transport Lorry, with Tri-ang Transport Made in New Zealand stickers on the sides, missing tail gate & roof sign, some distortion to cab top, surface rust, paint loss/wear, dints, Good 6/10



**9. TRI-ANG BEDFORD SERIES TIP TRUCK**

480mm long, red/blue pressed steel, Tri-ang NZ Bedford Series Tip Truck, surface rust especially in tray, wear/ paint loss, Good 6.5/10





**10. TRI-ANG JUNIOR SERIES SHELL TANKER**  
360mm long, red pressed steel Tri-ang Junior Series Shell Petrol Tanker, missing top cover latch and hoses minor rust, paint loss/wear, Good 7/10



**14. BUDDY L WRECK TRUCK**  
380mm long, yellow pressed steel Buddy L Wreck Truck, Buddy L stickers to both doors, light surface rust, minor paint loss/wear, Very Good 8/10



**11. BUDDY L MERRY-GO-ROUND TRUCK**  
320mm long, pink pressed steel Buddy L Merry-Go-Round truck with a wooden & plastic three horse merry go round on the back of the truck, the mechanism is not working, stickers to both doors, light surface rust, minor paint loss/wear to body, paint loss to top of merry-go-round, Very Good 7.5/10



**12. BUDDY L HORSE FLOAT**  
320mm long, teal/white cab roof, pressed steel Buddy L Horse Float, model 40813, has front suspension, missing perspex screen over body of float, light surface rust, minor paint loss/wear Very Good 8/10



**13. BUDDY L STEEL SPRING SUSPENSION MILK TRUCK**  
355mm long, yellow pressed steel, Buddy L Milk Truck, model 40830, Buddy L stickers to both doors, has front suspension, small splits in the plastic milk bottle holder, minor paint loss/wear, a few light scratches, Very Good 8/10



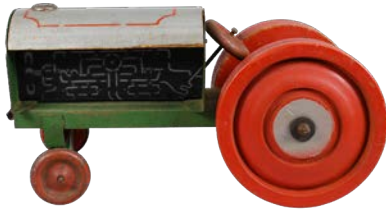
**15. BUDDY L BOXED HYDRAULIC STURDY DUMPER TRUCK**  
360mm long (box) green Pressed steel, Buddy L Hydraulic Study Dumper Truck, model 5532, in original box, Buddy L sticker to one side, Made In New Zealand For The Buddy L Corporation By Tri-ang Pedigree (NZ) Ltd, hydraulic action in working order minor surface rust, paint loss, as new but minor surface rust, paint loss, Very Good 9/10, box has some marks, Very Good 8/10



**16. BUDDY L BOXED PICK UP TRUCK**  
360mm long (box) yellow/black Pressed steel, Buddy L Pick Up Truck, model 5504, in original box, Buddy L sticker and It Steers to one side, Made In New Zealand For The Buddy L Corporation By Tri-ang Pedigree (NZ) Ltd as new but surface rust mostly on front end, minor marks, Very Good 8/10 box has minor marks, Very Good 9/10



**17. BUDDY L AERIAL LADDER FIRE ENGINE**  
640mm long, red/white pressed steel, Buddy L, model 40851, Aerial Ladder Fire Engine, B.L.F.D to sides, Buddy L 3 to cab doors, missing red flashing light to cab roof & one side ladder, existing side ladder slightly bent, ladder elevating mechanism not working, minor surface rust/ paint loss, Good 6.5/10



### 18. ABINGDONS NEW ZEALAND TRACTOR

300mm long, green/red/silver pressed steel/wood Abingdons Tractor, a Wellington based company that later became Hercules, c1940's exceptionally rare to find examples from this company, original sticker to rear of seat, "Entirely NZ made by Abingdons Ltd Wellington, large rear wheels are wooden, front wheels are steel minor surface rust, paint loss/wear, Very Good 8.5/10



### 22. ABINGDONS NEW ZEALAND ARMY WAGON

290mm long, orange/green Pressed steel & wood, Abingdon Army Wagon, a Wellington based company that later became Hercules, c1940's exceptionally rare to find examples from this company, Army printed to both sides of wagon, rust, paint loss/wear, a rare find, 7/10



### 19. ABINGDONS NEW ZEALAND TIP TRUCK

295mm long, red Pressed steel, Abingdon Tip Truck, a Wellington based company that later became Hercules, c1940's exceptionally rare to find examples from this company, rear wheels and axle have been replaced rust, paint loss/wear, a rare find, 6.5/10



### 23. ABINGDONS NEW ZEALAND PETROL TANK WAGON

295mm long, blue/grey Pressed steel & wood, Abingdon Petrol Tank Wagon, a Wellington based company that later became Hercules, c1940's exceptionally rare to find examples from this company, remains of Atlantic? sticker to side of tank, some borer to base of tank, rust, paint loss/wear, a rare find, 6.5/10



### 20. ABINGDONS NEW ZEALAND TIP TRUCK

270mm long, red/cream Pressed steel with wooden chassis, Abingdon Tip Truck, a Wellington based company that later became Hercules, c1940's exceptionally rare to find examples from this company, rust, paint loss/wear, a rare find, 5.5/10



### 24. ABINGDONS NEW ZEALAND CAB UNIT

208 long, blue Pressed steel & Wood, Abingdon Cab, the front half of an articulated truck, a Wellington based company that later became Hercules, c1940's exceptionally rare to find examples from this company, rust, paint loss/wear, a rare find, 6.5/10



### 21. ABINGDONS NEW ZEALAND STEAM ROLLER

300mm long, multiple colours wooden with pressed steel cab, Abingdon Steam Roller, a Wellington based company that later became Hercules, c1940's exceptionally rare to find examples from this company, no steering wheel, no borer which is unusual rust to metal cab, paint loss/wear, piece of painted plastic pipe for the chimney 8/10



### 25. ABINGDONS NEW ZEALAND ARTICULATED FLAT DECK TRUCK

380mm long, orange/red Pressed steel & wood, Abingdon Petrol Articulated Flat Deck, a Wellington based company that later became Hercules, c1940's exceptionally rare to find examples from this company, flat deck not a match to cab, probably another companies product, hitching attachment broken rust, paint loss/wear, a rare find, 6.5/10





#### 26. ABINGDONS NEW ZEALAND CAB/CHASSIS TRUCK

260mm long, blue pressed steel with wooden chassis, Abingdon Cab, a Wellington based company that later became Hercules, c1940's exceptionally rare to find examples from this company, some borer holes to wooden base, rust, paint loss/wear, 5.5/10



#### 27. CKO ARTICULATED TRUCK (GERMANY)

400mm long, yellow/red tinsplate, German CKO Articulated Truck, marketed in New Zealand by Lincoln, catalogue number 2385, see catalogue illustration showing this model, with working clockwork mechanism (not fully tested), jockey wheel on trailer minor surface rust, paint loss/wear, Very Good 8.5/10



#### 28. LINCOLN SUPER HERCULES TRACTOR & TRAILER

240mm long orange pressed steel, Lincoln Super Hercules steering Tractor, missing engine block, and drivers seat, steering mechanism working surface rust, paint loss/wear, Good 6/10 plus 230mm long Lincoln Trailer, green pressed steel, Lincoln Trailer, single axle surface rust, paint loss/wear, Good 5.5/10 (2)



#### 29. LINCOLN SUPER HERCULES TRUCK FRONT END LOADER

370mm long, multiple colours pressed steel, Lincoln Super Hercules (Bedford?) Truck with front end loader, assembled/painted in new Zealand with Lincoln wheels, originally Wyn-Toys Australia, one replacement blue wheel, rust, paint loss/wear, Fair 5.5



#### 30. LINCOLN SUPER HERCULES FRONT END LOADER TRUCK

370mm long, red/yellow/green pressed steel, Lincoln Super Hercules (Bedford?) Truck with front end loader, (originally Wyn-Toys Australia) surface rust, paint loss/wear, Good 7.5/10



#### 31. LINCOLN SUPER HERCULES RUBBLE DUMPER

420mm long, blue/red/white pressed steel, Lincoln Super Hercules Rubble dumper, model 4320, Lincoln Rubble Dumper to sides, tipping mechanism working repaint to parts, surface rust, paint loss/wear Good 7.5/10



#### 32. LINCOLN SUPER HERCULES JEEP & TRAILER

450mm overall length, blue pressed steel with plastic seats & internal body, Lincoln Super Hercules, Jeep & Trailer, Jeep has Wyn-Toy Australia wheels, (who were the source of the mouldings), trailer has Lincoln wheels, Lincoln For Toys sticker to right side body, Super Hercules Made by Lincoln decals to sides of trailer missing steering wheel & right hand headlight, rust, paint loss/wear Good 6/10 (2)



#### 33. LINCOLN SUPER HERCULES BULLDOZER

275mm long, orange pressed steel, Lincoln Super Hercules Bulldozer, originally Wyn-Toys Australia, with tracks surface rust, paint loss/wear Good 7.5/10



**34. LINCOLN SUPER HERCULES FRONT END LOADER TRUCK**

375mm long, red/yellow/green pressed steel, Lincoln Super Hercules (ex Wyn Australia) Front End Loader Truck, with Lincoln wheels, missing tailgate surface rust, paint loss/wear, Good 6/10



**37A. FUN HO ARTICULATED TRUCK AND TRAILER**

750mm long, orange/green cast alloy, Fun Ho Model 701 Giant Articulated Truck, wear/paint loss, minor paint loss, surface rust to steel axles, Good 7/10



**35. LINCOLN SUPER HERCULES HYDRAULIC 10 TON TIP TRUCK**

460mm long, red/yellow pressed steel, Lincoln Super Hercules Hydraulic 10 Ton Tip Truck, with operation hydraulic mechanism, Lincoln sticker to cab doors, originally Wyn-Toys Australia, rust, paint loss/wear Good 7.5/10



**37B. FUN HO GIANT TIP TRUCK**

480mm long, blue cast alloy/pressed steel Fun ho Giant Tip Truck note someone has very cleverly put a pressed steel tray on the truck, tray is marked Steel Roder, so it looks the part but.... repainted, minor marks, Fair 5/10



**36. LINCOLN SUPER HERCULES BULLDOZER**

275mm long, yellow pressed steel, Lincoln Super Hercules Bulldozer, originally Wyn-Toys Australia, with tracks, Lincoln Toys stickers surface rust, paint loss/wear Good 7.5/10



**38. FUN HO HEAVY DUMP TRUCK 522**

180mm long, red/lime green Fun Ho model 522 Heavy Dump Truck, 4 window version new front wheels, paint loss/wear, Good 7/10



**37. FUN HO TIP TRUCK 162c**

270mm long, teal/orange Fun Ho model 162c Tip Truck split to front wheel, paint loss/wear, surface rust on steel frame, Good 7/10



**39. FUN HO TIP TRUCK 806**

215mm long, yellow/white Fun Ho model 806 Tip Truck late version no aerials to plastic airhorn unit on roof, minor paint loss/wear, front grill sticker partially peeling off, Very Good 8/10





**40. FUN HO FIRE ENGINE SWIVEL LADDER 518**  
180mm long, red Fun Ho model 518, Fire Engine with swivel ladder, Fire Department decals to sides, Fun Ho decal to rear, early version small split in one back wheel, wear/paint loss, Very Good 8/10



**44. FUN HO MEDIUM FRONT END LOADER 532**  
250mm long, red/yellow Fun Ho model 532 Medium Front End Loader, early version, Fun Ho decals on engine wear/paint loss, Good 7.5/10



**41. FUN HO ROAD GRADER 803**  
270mm long, orange Fun Ho model 803 Grader, no wheel inserts minor wear/paint loss Good 8/10



**45. FUN HO OLIVER TRACTOR 81**  
130mm blue/red Fun Ho model 81, Oliver Tractor, with low tow hitch wear/paint loss, Good 7.5/10



**42. FUN HO LARGE TIP TRUCK 502**  
320mm long, red/green Fun Ho model 502 Large Tip Truck, late version paint loss/wear, surface rust on steel frame, Good 7.5/10



**46. FUN HO FARMALL FRONT END LOADER 531**  
295mm long, teal Fun Ho model 531 Farmall Front End Loader, possible replacement steering wheel wear/paint loss, Good 8/10



**43. FUN HO EARTH SCRAPER 804**  
280mm long, red Fun Ho model 804 Earth Scraper, wear/paint loss, Good 7.5/10



**47. TRI-ANG W SERIES FIRE TRUCK 7686/W555**  
265mm long, red with blue accessories pressed steel, Triang W Series Fire Truck, working bell, Made in New Zealand sticker, black grill, steel wheels minor paint loss/wear, minor surface rust, Very Good 7.5/10





**48. TRI-ANG W SERIES SWB TIP TRUCK**  
240mm long, blue with silver grill pressed steel, Tri-ang W Series Short Wheel Base, Tip Truck, was originally green, overpainted in blue, grill overpainted to silver, no tail gate, tipping mechanism operational minor surface rust, minor paint loss/wear, Good 5/10



**49. TRI-ANG W SERIES FIRE TRUCK 7686/W555**  
265mm long, red with cream accessories pressed steel, Triang W Series Fire Truck, working bell, Made in New Zealand sticker, rubber wheels, chrome to grill with tarnish minor paint loss/wear, Very Good 8.5/10



**50. TRI-ANG BOXED MINIC SERIES 2 CLOCKWORK POWERED NUFFIELD TOY TRACTOR**  
225mm long box, 210mm long toy, red/green plastic body, metal mudguards & mechanism, Tri-ang Minic, Series 2, Clockwork Powered Nuffield Tractor, with driver, has key for wind up mechanism & steering (working) with reversing gear & hand brake, with box marked Lines Bro NZ Ltd, Tamaki Auckland, box made by Bakers Cardboard Box Co Auckland, has tape especially to one end, Good 7/10 Toy has minor marks, Very Good 9/10



**51. TRI-ANG 0 SERIES TIP TRUCK**  
320mm long, green/red pressed steel, Tri-ang 0 Series Tip Truck, grill & headlight have been overpainted, minor surface rust, minor paint loss/wear, Very Good 8/10



**52. TRI-ANG W SERIES SWB BREAKDOWN TRUCK**  
240mm long, red with black crane, pressed steel, Tri-ang W Series Short Wheel Base, Breakdown Truck, no string or hook, made in New Zealand sticker, remains of price sticker 15/11 minor surface rust, minor paint loss/wear, Good 7/10



**53. TRI-ANG W SERIES ARTIC LOW LOAD LORRY WITH TRAILER 7684/W553**  
485mm long, blue with black grill pressed steel, Triang W Series Articulated Low Load Lorry with Trailer, Made in New Zealand, rubber wheels, minor surface rust, minor paint loss/wear, Very Good 8.5/10



**54. TRI-ANG W SERIES FIRE TRUCK 7686/W555**  
265mm long, red with blue accessories pressed steel, Triang W Series Fire Truck, working bell, but missing decorative cab roof bell, no ladders, Made in New Zealand sticker, rubber wheels, missing both headlights, minor paint loss/wear, light surface rust Good 5.5/10



**55. TRI-ANG No 1 CRANE**  
180mm long wheel to wheel, x 270mm tall, yellow pressed steel crane, Tri-ang No. 1, model 40771, no hook, flex between body and base surface rust, paint loss/wear, Good 6.5/10



**56. TRI-ANG FORKLIFT  
NUMBER 40799**  
255mm long, 285mm tall, yellow/red pressed steel, Tri-ang Forklift, model 40799, with home made pallet and forks, Tri-ang Made In New Zealand sticker to cab roof, in working order light surface rust, paint loss/wear, Good 7.5/10



**60. BRENTWARE MIGHTY MIDGETS JEEP**  
80mm long model with original packaging, yellow Mazac alloy, Brentware Mighty Midgets Jeep, packaging has been opened but has not been played with minor paint loss, Very Good 9/10



**57. BRENTWARE MIGHTY MIDGETS PANEL VAN**  
103mm long model with original packaging, red Mazac alloy, Brentware Mighty Midgets Panel Van minor paint loss, Very Good 9/10



**61. BRENTWARE MIGHTY MIDGETS ALFA ROMEO RACING CAR**  
100mm long model with original packaging, green Mazac alloy, Brentware Mighty Midgets Alfa Romeo Racing Car, packaging has been opened but has not been played with minor paint loss, Very Good 9/10



**58. BRENTWARE MINI No 1 RACING CAR**  
100mm long model, 175mm with original packaging, yellow Mazac alloy, Brentware, No. 1 Racing Car, marketed as Mini Cars by Lincoln, minor paint loss, Very Good 9/10



**62. BRENTWARE MIGHTY MIDGETS AUSTIN TANKER**  
110mm long model with original packaging, red Mazac alloy, Brentware Mighty Midgets Austin Tanker, packaging has been opened but has not been played with minor paint loss, Very Good 9/10



**59. BRENTWARE MINI CAR No 1 ESTATE CAR**  
100mm long model, 160mm with original packaging, red Mazac alloy, Brentware, No. 1, 6 Estate Car, Racing Car, marketed as Mini Cars by Lincoln, Very Good 9.5/10



**63. BRENTWARE MODEL MOBIL PETROL TANKERS**  
2 x 227mm long red Mazac alloy, attributed to Brentware, Petrol Tanker with Mobil Stickers to both sides and the back of the tank, marketed at Mobil Petrol Stations, slightly misshaped at rear of tanks, minor paint loss, Very Good 8/10 (2)





**64. BRENTWARE MIGHTY MIDGETS DRINKS TRUCK**  
108mm long model with original packaging, red Mazac alloy, Brentware Mighty Midgets Drinks Truck, packaging has been opened but has not been played with minor paint loss, Very Good 9/10



**65. BRENTWARE MIGHTY MIDGETS CHEV CORVETTE**  
100mm long model with original packaging, yellow Mazac alloy, Brentware Mighty Midgets Chev Corvette, packaging has been opened but has not been played with minor paint loss, Very Good 9/10



**66. BRENTWARE MODEL CHEV CORVETTE, CADILLAC SEDAN VEHICLES**  
100mm long, red Mazac alloy, Brentware Chev Corvette, repainted to a high level, Very Good 8/10 plus 116mm long red Mazac alloy, Brentware Cadillac Sedan paint loss, Good 7/10 (2)



**67. TONKA 41 BOAT TRANSPORTER**  
700mm long, blue with red/white boats pressed steel carrier & plastic boats, Tonka Boat Transport, No. 41, the 4 boats & 2 outboard motors are reproduction, Tonka Mound, Minn stickers to both doors, sticker to underside of cab, Remember Axle Bearings Need Oiling Regularly, (indicates NZ made) missing one headlight, surface rust, paint loss/wear, 7/10



**68. TONKA PRESSED STEEL CAR CARRIER**  
720mm long yellow pressed steel Tonka Car Carrier, model 2840, with 2 plastic Falcon Utes, Turbine Cab version, Tonka N.Z. wheels, box has Made In New Zealand, printed to two sides, sellotape marks & storage wear to box, one falcon has broken roof struts, faded, minor surface rust, wear/paint loss, Good 8/10



**69. TONKA LOGGER MODEL 2008**  
585mm long, yellow pressed steel, Tonka Logger model 2008, no stickers to show country of manufacturer, missing timber & chain, one replacement pin, surface rust, paint loss/wear, Good 6.5/10



**70. TONKA DUMP TRUCK**  
330mm long, orange/yellow, pressed steel, Tip/Dump Truck, Tonka New Zealand sticker to side, Tonka Toys to tail gate, tipper mechanism in working order surface rust, mostly to underside, minor wear/paint loss, Very Good 8/10



**71. TONKA SURREY JEEP**  
255mm long, vibrant pink pressed steel/plastic, Tonka Surrey Jeep, No. 350, Tonka Mound Minn sticker to rear, missing spare wheel, surface rust, minor wear/paint loss, Very Good 8/10



**72. TONKA MIGHTY SERIES BULLDOZER**  
300mm long, yellow/black pressed steel, Mighty Series Tonka Bulldozer, Tonka New Zealand sticker to base, with tracks in working order, minor surface rust, wear/paint loss, Good 8/10



**76. TONKA MINI CAR CARRIER**  
470mm long green pressed steel, Tonka Mini Car Carrier, model 1096, Tonka stickers to sides missing back gate, wear/paint loss, surface rust, Good 7.5/10



**73. TONKA JEEP COMMANDER IN BOX**

270mm long, green pressed steel/plastic, Tonka No. 304 Jeep Commander GR2-2431 to sides of bonnet, Tonka to sides, impressed Jeep to front & sides, Made In New Zealand to base, in an American box surface rust, paint loss/wear, Good 7/10



**77. TONKA TRACTOR**  
220mm long, red pressed steel, Tonka Tractor, model 250, missing steering wheel, Tonka NZ rear wheels, surface rust, paint loss/wear Good 6.5/10 plus 95mm long orange plastic driver marked Tonka, Very Good, 9/10 (2)



**74. TONKA JEEP PICK UP TRUCK**  
240mm long, white/orange pressed steel, Tonka Mini Series Jeep Wrecker, model 1068, Jeep to front bumper, Tonka New Zealand stickers to sides, Kiwi sticker to underside, missing hook & tailgate, surface rust to front bumper, minor wear/paint loss, Very Good 8/10



**78. TONKA LOGGER MODEL 2008**  
585mm long, yellow pressed steel, Tonka Logger model 2008, Tonka Toys, USA wheels missing timber & chain, missing three stanchions, major surface rust, paint loss/wear, Fair 5/10



**75. TONKA PUMPER**  
440mm long, red in box pressed steel, Tonka Pumper Fire Engine, model 926, with Fire Hydrant, Tonka Mound Minn stickers to sides, Remember Axle Bearings Need Oiling Regularly to underside (this sticker exclusively used in New Zealand only) Tonka Toys made In New Zealand to rear, boxed marked Made In New Zealand Under Licence some accessories have been replaced, hoses, ladder locker doors (not fitted), box in poor condition, light surface rust, minor paint loss/wear, Good 7.5/10



**79. TONKA PRESSED STEEL CAR CARRIER**  
750mm long, orange/yellow pressed steel Tonka Car Carrier, model 2840, no tail gate, yellow rear section faded, repainted, surface rust, paint loss/wear, Good 6/10





#### 80. FUN HO TRACTOR LOADER, MIDGET TRACTOR

300mm long red/yellow cast alloy, Fun Ho Large Front End Loader, model 516 paint loss/wear, surface rust to steel frame, Good 7.5/10 plus 43mm long, blue alloy, Fun Ho Midget Fordson Major Tractor, model 16 paint loss/wear, Good 7/10 (2)



#### 81. FUN HO ROAD GRADER 803

270mm long, green Fun Ho Grader, model 803 minor wear/paint loss Good 8/10



#### 82. FUN HO LARGE RACER

190mm long, blue/yellow cast alloy, Fun Ho Large Racer, Fun Ho Toy No. 80 NZ impressed to underside, possibly repainted, new axles and painted wheels not original?, minor paint loss/wear, Good 7.5/10



#### 83. FUN HO FIRE ENGINE

115mm long, red cast alloy, Fun Ho Fire Engine, Model 175, wear/paint loss, rust to axles, Good 7/10



#### 84. FUN HO FIRE ENGINE

250mm long, red/yellow cast alloy, Fun Ho Model 105, Large Fire Engine with two ladders, ladders possible replacements wear/paint loss, Very Good 8/10



#### 85. FUN HO SMALL FRONT END LOADER TIP TRUCK

215mm long, orange/blue alloy, Fun Ho Small Front End Loader Tip Truck, model 408, new rear wheels, paint loss/wear, Good 7/10



#### 86. FUN HO LARGE ROADSTER

150mm long, red/blue cast alloy, Fun Ho Roadster, Model 154, resin reproduction men, wear/paint loss, Fair 6/10



#### 87. FUN HO LARGE FRONT END LOADER TIP TRUCK

350mm long, red/orange/blue alloy, Fun Ho Large Front End Loader Tip Truck, model 530, some parts repainted, paint loss/wear, Good 7/10



#### 88. FUN HO LARGE TIP TRUCK

330mm long red/blue sand cast alloy/steel, Fun Ho Large Tip Truck, model 502, earlier version with spare wheel to back of tray, (damaged) Pat Applied For decal to underside major paint loss/wear, surface rust to steel frame, split to one front wheel, rear wheels are Fun Ho but not original, Good 6/10



#### 89. FUN HO LARGE ARTICULATED TRUCK, PART EARTH SCAPER

380mm long, orange/teal alloy Fun Ho Large Articulated Truck model 536, paint loss/wear, splits to some wheels, Good 6/10 plus 200mm long orange alloy/steel, the back part of a model 804 earth scraper, paint loss/wear, surface rust, Good 6/10 (2)



#### 90. FUN HO REVOLVER, KIWI WATER PISTOL

210mm long, grey cast alloy, Fun Ho Revolver, Fun Ho N.Z. No. 150 impressed to one side, Fun Ho decal to one side, broken hammer, paint loss/wear, Good 7/10 plus 120mm long, green metal water pistol? marked Kiwi to both sides, surface rust, paint loss/wear, Good 7/10 (2)



#### 91. MACKENZIE & BANNISTER LOW LOADER

310mm long red/yellow sand cast aluminium, Jumbo Toy articulated low loader, made by MacKenzie & Bannister, missing crane, paint loss/wear, Good 6/10



#### 92. FUN HO LARGE TIP TRUCK

330mm long red/blue sand cast alloy/steel, Fun Ho Large Tip Truck, model 502 paint loss/wear, surface rust to steel frame, Good 7/10



#### 93. TRI-ANG EXCAVATOR MODEL 300

480mm long, yellow pressed steel, Tri-ang Excavator, model 300, Triang Made in New Zealand sticker to top of cab, cab swivels, tracks in good condition, with original instruction leaflet string broken so untested, light surface rust, paint loss/wear, Very Good 7.5/10



#### 94. TRI-ANG PRESSED STEEL LONDON BUS

570mm long, red/yellow pressed steel, Tri-ang London Bus, model 40756, Green Line London transport to one sticker, other indistinct stickers to sides, missing front grill headlight panel surface rust, paint loss/wear, Good 6/10



#### 95. WOODEN TRACTION ENGINE

400mm long x 300mm tall, dark red/silver wooden home made Traction Engine, steering is working, marked to base Coll 1987, 054000 to base minor marks, Very Good 8.5/10





**96. LINCOLN MAJOR MODEL NAVY WING FIGHTER**  
160mm long x 220mm wing span, red/silver Mazac alloy, Lincoln Major Model Navy Wing Fighter, model 4100, folding wings and wheels, ex Hubley U.S.A. dies, cast in New Zealand, one blade of propellor missing, minor paint loss, Very Good 7/10



**97. LINCOLN MAJOR MODEL CATERPILLAR TRACTOR WITH BLADE**  
165mm long, red/yellow Mazac alloy, Lincoln Major Model Caterpillar Tractor with blade, No. 4105?, bonnet inscribed Empire Made, that is made in Hong Kong for Lincoln, c1950's, missing exhaust stack, very minor paint loss, Very Good 9/10



**98. LINCOLN MAJOR MODEL MASSEY HARRIS TRACTOR**  
170mm long, unpainted Mazac alloy, Lincoln Major Model Massey Harris Tractor, No. 4101, c1950's, believed to be end of production with plastic wheels minor marks, Very Good 9/10



**99. LINCOLN MAJOR MODEL MASSEY HARRIS TRACTOR**  
150mm long, red/yellow Mazac alloy, Lincoln Major Model Massey Harris Tractor, No. 4101, bonnet inscribed Empire Made, that is made in Hong Kong for Lincoln, c1950's, steering mechanism working, missing air cleaner & exhaust, very minor paint loss, 9/10



**100. LINCOLN TOYS MAJOR MODELS TRACTOR**  
160mm long boxed toy, red/yellow diecast, Lincoln Toys Major Models, Tractor, With Rubber Tyres, Articulated Steering, Wheel Control, Lincoln International, Empire Made, (Hong Kong) missing exhaust & air cleaner, very minor paint loss, box has been cut down to the size of a tractor, Very Good 8/10



**100A. LINCOLN TOYS MAJOR MODELS WELL BACK TRUCK**  
210mm long boxed toy truck, red diecast, Lincoln Toys, Major Models, Well-Back Truck, Hinged Tail Board, Cat. No. 4106, Made In New Zealand By Lincoln Industries Ltd, Auckland, both the box and model has the price 18/9 marked on it very minor paint loss, minor damage to box, small rip to one end, Very Good 9/10



**101. LINCOLN MAJOR MODEL NAVY WING FIGHTER**  
160mm long x 220mm wing span, red/silver Mazac alloy, Lincoln Major Model Navy Wing Fighter, model 4100, folding wings and wheels, ex Hubley U.S.A. dies, cast in New Zealand, minor paint loss, Very Good 8/10



**102. LINCOLN TOYS MAJOR MODELS CATERPILLAR TRACTOR**  
155mm long boxed toy truck, red/yellow pressed steel, Lincoln Toys, Major Models Massey Harris Caterpillar Tractor, Cat. No. 4104, Made In New Zealand By Lincoln Industries Ltd, Auckland, the box has the price 25/- marked on it, missing exhaust very minor paint loss, minor marks to box, Very Good 8.5/10



### 103. LINCOLN TOYS MAJOR MODELS DUMP TRUCK

210mm long boxed toy truck, red/yellow pressed steel, Lincoln Toys Major Models, Dump Truck, Lever Operated Tipping Movement, Lincoln International, Empire Made, (Hong Kong) Empire Made sticker to underside of toy very minor paint loss, wear & marks to the box, Very Good 8.5/10



### 107. LINCOLN MAJOR MODEL MASSEY HARRIS TRACTOR

170mm long, red Mazac alloy, Lincoln Major Model Massey Harris Tractor, No. 4101, c1950's, believed to be end of production with plastic wheels, no steering in this example, minor paint loss, minor marks, Very Good 8/10

### 104. LINCOLN TOYS MAJOR MODELS DUMP TRUCK

210mm long boxed toy truck, red/yellow diecast, Lincoln Toys Major Models, Dump Truck, Lever Operated Tipping Movement, with sack barrow accessory, Lincoln International, Empire Made, (Hong Kong) the box has the price 8/11 marked on it very minor paint loss, wear, & tape marks to the box, wear to two tyres, Very Good 8/10



### 108. LINCOLN MAJOR MODEL MASSEY HARRIS TRACTOR

155mm long, red/yellow Mazac alloy, Lincoln Major Model Massey Harris Tractor, No. 4101, c1950's, New Zealand made version, missing exhaust & air cleaner, with working steering minor paint loss, minor marks, some from sellotape, Very Good 8/10



### 105. LINCOLN TOYS MAJOR MODELS FRONT END LOADER

215mm long boxed toy, red/yellow diecast, Lincoln Toys Major Models, Front End Loader With Rubber Tyres, Articulated Steering, Wheel Control, Lincoln International, Empire Made, (Hong Kong) missing exhaust & air cleaner, very minor paint loss, wear/marks box has flaps missing, small rip to the box, Good 7.5/10



### 109. LINCOLN MAJOR MODEL MASSEY HARRIS TRACTOR

170mm long, red/silver Mazac alloy, Lincoln Major Model Massey Harris Tractor, No. 4101, c1950's, New Zealand made version, no steering minor paint loss, minor marks, Very Good 8/10

### 106. LINCOLN TOYS MAJOR MODELS FRONT END LOADER

215mm long boxed toy, red/yellow diecast, Lincoln Toys Major Models, Front End Loader With Rubber Tyres, Articulated Steering, Wheel Control, Lincoln International, Empire Made, (Hong Kong) missing exhaust & air cleaner, very minor paint loss, wear/marks & small rip to the box, Very Good 8.5/10



**110. MICRO MODEL INTERNATIONAL VEHICLES**  
Diecast, Micro Models Produced from The Original Micro Tools By Micro Models Ltd P O Box 815 Christchurch from 1994-1998  
105mm long boxes International Truck Delivery Van, MM001  
International Truck Breakdown, MM702 both mint in box, 10/10 (2)





### 111. MICRO MODEL CUSTOMLINE SEDAN ALL BLACK 1956 SPRINGBOK TOUR

Diecast, Micro Models Produced from The Original Micro Tools By Micro Models Ltd P O Box 815 Christchurch from 1994-1998  
105mm long box Customline Sedan 1956 Springbok Tour, 1956 Springbok Tour Of New Zealand mint in box, 10/10



### 112. MICRO MODEL VAUXHALLS

Diecast, Micro Models Produced from The Original Micro Tools By Micro Models Ltd P O Box 815 Christchurch from 1994-1998  
105mm long boxes Vauxhall Cresta Pa, "Mountain Rose", MM701 Vauxhall Wyvern, MM609 both mint in box, 10/10 (2)



### 113. MICRO MODEL HOLDEN, INTERNATIONAL

Diecast, Micro Models Produced from The Original Micro Tools By Micro Models Ltd P O Box 815 Christchurch from 1994-1998  
105mm long boxes Holden FJ Police, MM004, no aerial, Very Good 9/10 International Bottle Truck, Cola-Cola MC001, Excellent 10/10 (2)



### 114. MICRO MODEL INTERNATIONAL VEHICLES

Diecast, Micro Models Produced from The Original Micro Tools By Micro Models Ltd P O Box 815 Christchurch from 1994-1998  
105mm long boxes  
International Truck Delivery Van, MM009, Peters Ice Cream  
International Truck Delivery Van, MM001, Micro models "We're Back" both mint in box, 10/10 (2)



### 115. MICRO MODEL HOLDENS

Diecast, Micro Models Produced from The Original Micro Tools By Micro Models Ltd P O Box 815 Christchurch from 1994-1998  
105mm long boxes Jaguar XK120 MM407, MGA Roadster, MM502 both mint in box, 10/10 (2)



### 116. MICRO MODEL INTERNATIONAL VEHICLES

Diecast, Micro Models Produced from The Original Micro Tools By Micro Models Ltd P O Box 815 Christchurch from 1994-1998  
105mm long boxes  
International Truck Delivery Van, MM002  
International Truck Breakdown, MM702  
both mint in box, 10/10 (2)



### 117. MICRO MODEL VOLKSWAGEN

Diecast, Micro Models Produced from The Original Micro Tools By Micro Models Ltd P O Box 815 Christchurch from 1994-1998  
115mm long box  
Volkswagen Microbus Ambulance, mint in box 10/10 plus  
105mm long box, promoting Coca Cola  
Volkswagen Kombi Van, with Coca-Cola advertising, minor paint loss & marks, Very Good 8.5/10 (2)



### 118. MICRO MODEL HOLDENS

diecast, Micro Models Produced from The Original Micro Tools By Micro Models Ltd P O Box 815 Christchurch from 1994-1998  
105mm long boxes  
FJ Holden Panel Van, Royal Mail, MM005  
FJ Holden Panel Van, Police, MM004  
both mint in box, 10/10 (2)



#### 119. MICRO MODEL HOLDEN & FORD

Diecast, Micro Models Produced from The Original Micro Tools By Micro Models Ltd P O Box 815 Christchurch from 1994-1998  
105mm long boxes  
Holden FJ Special Sedan "Sydney Model Auto" MP703 plus  
Ford Customline "Vic Police" MM514  
both mint in box, 10/10 (2)



#### 122A. BOOMAROO TOURNA LOADER

280mm long, yellow pressed steel Boomaroo Tournal Loader, model 8802, Boomaroo Made In New Zealand decal to front surface rust, paint loss/wear, Good 6.5/10



#### 120. BOOMAROO TOURNAHOPPER

550mm long, yellow pressed steel, rubber Boomaroo Toys wheels, Boomaroo Tournahopper Dump Truck with driver some rust, some paint loss, missing headlights, Very Good 7.5/10



#### 123. BOOMAROO CONCRETE MIXER TRUCK

440mm long, blue/red/yellow pressed steel/plastic, Boomaroo Concrete Mixer Truck, Super 77 series, No. 7707, partial Made In New Zealand sticker to top of cab, missing chute, surface rust, wear/paint loss, Good 7.5/10



#### 121. BOOMAROO TOURNATRACKTOR

290mm long, yellow/red pressed steel, Boomaroo Tournatractor missing driver & exhaust, with plastic engine block has been repainted, light surface rust, paint loss/wear, Good 7.5/10



#### 124. BOOMAROO FORKLIFT

180mm long, 280mm tall, yellow/black pressed steel, Boomaroo Hyster Forklift, with driver, forks missing, partial Made In New Zealand sticker, steering in working order light surface rust, paint loss/wear, Good 6.5/10



#### 122. BOOMAROO TOURNAROCKER

440mm long, yellow pressed steel, Boomaroo Tournarocker, missing driver, engine block & operating string, 2 partial Made In New Zealand stickers light surface rust, paint loss/wear, Good 7.5/10



#### 125. BOOMAROO BEDFORD DELIVERY TRUCK

360mm long, red/yellow pressed steel, Boomaroo Bedford Delivery Truck, wheels marked Boomaroo Toys, Made in Australia to side decals, Made In New Zealand to front decal, complete with driver surface rust, paint loss/wear, Good 7/10



## 126. BOOMAROO TRACTOR, TWO WHEEL TRAILER & MOWER

270mm long, red/blue/yellow



Tractor, Made In New Zealand Sticker on

, Very Good 8/10 plus

mower  
5/10 plus

280mm long blue  
pressed steel Boomaroo 2 wheel trailer, no tailgate  
rust, extensive paint loss, Fair 4/10 (3)

## 127. BOOMAROO WASHING MACHINES

280mm tall, white  
pressed steel Boomaroo Washing  
Machine, round shape, no lid, agitator  
partially working  
surface rust, paint loss/wear, Good 6/10  
plus

280mm tall, white  
pressed steel Boomaroo Washing  
Machine, square shape, with plastic lid,  
agitator working  
surface rust, paint loss wear, Good 6/10  
(2)



## 128. FUN HO MIDGET FORD DUMP TRUCK 50, BOXED

97mm long box, 70mm long car, yellow/  
white  
diecast, Fun Ho Ford Dump Truck No.  
50 in original box,  
Excellent, 9.5/10



## 132. FUN HO MIDGET HOLDEN SALOON, 34, BOXED

60mm long box, 54mm  
long car, blue diecast,  
Fun Ho Midget Holden  
Saloon, No. 34, in original  
box, Mobil Oil advertising  
on box, with tow bar  
Excellent, 9.5/10



## 129. FUN HO KING SIZE INTERNATIONAL ARTICULATED TRUCK K1, BOXED

146mm long box, 143mm long car, green/brown diecast, Fun Ho King  
Size International Articulated Truck, No. K1 in original box, very  
minor paint loss, Very Good 9/10

## 133. FUN HO MIDGET CHEVROLET BEL AIR 24, BOXED

95mm long box, 70mm long car, cream diecast, Fun Ho Midget  
Chevrolet Bel air No. 24, in original box, Mobil Oil advertising on box  
Excellent, 9.5/10



## 130. FUN HO MIDGET ROAD ROLLER 37, BOXED

95mm long box, 70mm long car, orange diecast, Fun Ho Midget Road  
Roller, No. 37, in original box, Mobil Oil advertising on box tiny patch  
of corrosion on one rear roller, very minor paint loss, Very Good 9/10



## 131. FUN HO MIDGET CATERPILLAR TRACTOR 42, BOXED

95mm long box,  
52mm long car, red  
diecast, Fun Ho  
Midget Caterpillar  
tractor No. 42 in  
original box, Mobil  
Oil advertising on  
box, early version  
Excellent, 9.5/10





**134. FUN HO MIDGET E TYPE JAGUAR 43, BOXED**  
60mm long box, 54mm long car, mustard diecast, Fun Ho Midget E Type Jaguar No. 43, in original box, Mobil Oil advertising on box Excellent, 9.5/10



**138. BRENTWARE MODEL ALFA ROMEO, RAILWAY LOCOMOTIVE, CHEV PANEL VAN**  
102mm long, red Mazac alloy, Brentware, Chev Panel Van paint loss, Good 7/10 plus 98mm long, red Mazac alloy, Brentware, Alfa Romeo Racing Car, paint loss, Good 7.5/10 plus 100mm long, red Mazac alloy, Brentware, Railway Locomotive paint loss, Good 7/10 (3)



**135. TOMMY DOO SLUSH MOULDED LEAD TOYS**  
all Slush Moulded Lead Toys, made by Die Cast Toys Limited, known as Tommy Doo, 105mm long orange, Speed Of The Wind Racing Car plus 93mm long blue, Mercedes Racing Car plus 87mm long green, Tractor plus, 126mm long khaki Soldier lying prone with machine gun, all have very minor paint loss/marks, more so on the tractor, Very Good 8/10 (4)



**139. BRENTWARE MODEL CHEV PANEL VAN, FORD PICKUP, AUSTIN TANKER**  
102mm long, red Mazac alloy, Brentware, Chev Panel Van minor paint loss, Very Good 9/10 plus 110mm long, red Mazac alloy, Brentware, Ford? Pick Up Truck paint loss, Good 6.5/10 plus 110mm long, red/yellow Mazac alloy, Brentware, Austin Petrol Tanker, unusual 2 tone colour system not often seen in this range paint loss, Good 6.5/10 (3)



**136. BRENTWARE MODEL CADILLAC SEDAN, FORD ESTATE CAR VEHICLES**  
116mm long, green Mazac alloy, Brentware Cadillac Sedan paint loss, Good 6.5/10 plus 100mm long, red Mazac alloy, Brentware, Ford? Estate, paint loss, Good 6.5/10 (2)



**140. BRENTWARE MODEL, CADILLAC CONVERTIBLE, ALFA ROMEO RACING CAR VEHICLES**  
117mm long red Mazac alloy, Brentware Cadillac Convertible significant paint loss, windscreen complete which is unusual, these often get broken, Good 6.5/10 plus 98mm long, green Mazac alloy, Brentware, Alfa Romeo Racing Car, original condition, Excellent 9.5/10 (2)



**137. BRENTWARE MODEL FORD ESTATE CAR, RAILWAY LOCOMOTIVE, JEEP VEHICLES**  
100mm long, red Mazac alloy, Brentware, Ford? Estate, paint loss, Good 6.5/10 plus 100mm long, red Mazac alloy, Brentware, Railway Locomotive minor paint loss, Very Good 8/10 plus 83mm long green Mazac alloy, Brentware, Jeep very minor paint loss, Very Good 9/10 (3)



**141. BRENTWARE MODEL MOBIL PETROL TANKERS**  
2 x 227mm long red Mazac alloy, attributed Brentware, Petrol Tanker with Mobil Stickers to both sides and the of the tank, marketed at Mobil Petrol Stations one cab has been repainted, in a slightly darker colour, paint loss, Good 7/10 plus the same model, no stickers to tank, significant paint loss, damage to rear, Good 5/10 (3)





#### 142. BRENTWARE MODEL CHEV CORVETTE, CADILLAC CONVERTIBLE VEHICLES

100mm long, red Mazac alloy, Brentware Chev Corvette, minor paint loss, Very Good 8/10 plus 117mm long red Mazac alloy, Brentware Cadillac Convertible, windscreen complete which is unusual, these often get broken, paint loss, Good 7/10 (2)



#### 143. BRENTWARE MODEL CHEV PANEL VAN, AUSTIN TANKER, AUSTIN DRINKS TRUCK

110mm long, red Mazac alloy, Brentware, Austin Drinks Truck minor paint loss, Very Good 8.5/10 plus 110mm long, red Mazac alloy, Brentware, Austin Petrol Tanker, minor paint loss, Very Good 8.5/10 plus 102mm long, yellow Mazac alloy, Brentware, Chev Panel Van minor paint loss, Very Good 9/10 (3)



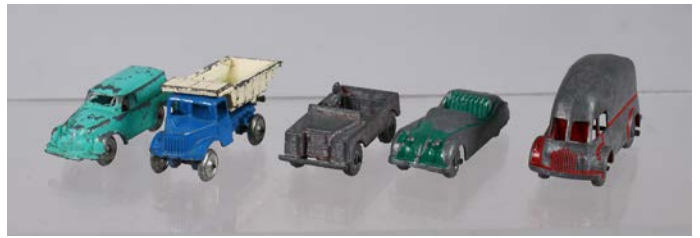
#### 144. BRENTWARE MODEL VEHICLES

Brentware models set, needing restoration, all have their wheels, approx 95mm -100mm long, left to right: Chev Panel Van, Austin Drinks Truck, Railway Locomotive (Ford) Estate Car, (Ford) Pickup, Austin Tanker, Cadillac Sedan Jeep, (Alfa Romeo) Racing Car, Chev Corvette, Cadillac Convertible paint loss, play worn, Good 6.5/10 (11)



#### 145. BRENTWARE MODEL VEHICLES

Brentware models set, needing restoration, all have their wheels, approx 95mm -100mm long, left to right: Chev Panel Van, Austin Drinks Truck x 3, Railway Locomotive (Ford) Estate Car, (Ford) Pickup, Austin Tanker, Cadillac Sedan Jeep, (Alfa Romeo) Racing Car, paint loss, play worn Good 6.5/10 (11)



#### 146. LINCOLN MOTORWAY MINI MODELS

Left to right, 4310 Light Van, 4305 Dump Truck, 4303 Land Rover, 4308 Jaguar XK120 Roadster, 4311 Pantechnicon, paint loss, minor marks, 6.5/10 (5)



#### 147. LINCOLN MOTORWAY MINI MODELS

left to right, 4310 Light Van, 4311 Pantechnicon, 4301 Fire Engine, 4307 Breakdown Truck, ladder is loose on Fire Engine, paint loss, minor marks, 6.5/10 (4)



#### 148. LINCOLN MOTORWAY MINI MODELS

left to right, 4302 Pick-up/Utility truck, 4305 Dump Truck (tray is loose), 4306 Landliner Coach, 4311 Pantechnicon, paint loss, minor marks, 6.5/10 (4)



#### 149. LINCOLN MOTORWAY MINI MODELS

left to right, 4303 Land Rover, 4300 Austin Petrol Tanker, 4308 Jaguar XK120 Roadster, 4311 Pantechnicon, paint loss, minor marks, 6.5/10 (4)



#### 150. LINCOLN MOTORWAY MINI MODELS

left to right, 4307 Breakdown truck, 4309 Racing Car, 4308 Jaguar XK120 Roadster, 4311 Pantechnicon, paint loss, minor marks, 6.5/10 (4)



#### 151. LINCOLN MOTORWAY MINI MODELS

left to right, 4310 Light Van, 4306 Landliner Coach, 4308 Jaguar XK120 Roadster, 4307 Breakdown Truck, paint loss, minor marks, 6.5/10 (4)



#### 152. LINCOLN MOTORWAY MINI MODELS

left to right, 4310 Light Van, 4300 Austin Petrol Tanker, 4309 Racing Car, 4303 Land Rover, paint loss, minor marks, 6.5/10 (4)



#### 153. LINCOLN MOTORWAY MINI MODELS

left to right, 4306 Landliner coach, 4302 Pick-Up/Utility Truck, 4301 Fire Engine (resin replacement ladder), 4300 Austin Petrol Tanker (4)



#### 154. JOYPHYL TOYS WOODEN STOCK TRUCK

380mm long, red/silver wooden and metal truck, Joyphyl Toys Stock Truck, made in Sumner Christchurch, see page 160 of Carville Stewarts book, Toys Of Road Vehicles, Made In New Zealand, JoyPhyl Toys stickers to sides of crate, rubber wheels, minor marks, very Good 9/10



#### 155. TRI-ANG DIESEL SERIES MILK TRUCK

410mm long, red/grey pressed steel, Tri-ang Diesel Series Milk Truck, model 40717, full load of 8 milk cans plus one spare, two are missing lids, 4 have hand written cream, 4 with hand written milk, Tri-ang Made In New Zealand sticker to front, surface rust, paint loss/wear, Very Good 7.5/10



#### 156. TRI-ANG REGAL SERIES TRUCK

500mm long, red/green pressed steel, Tri-ang Regal Series 300, Truck, Tri-ang printed to both sides, New Boron sticker stuck on one side, partially over the Tri-ang name, and another to the rear, rust, paint loss/wear, minor dints, Good 6/10



#### 157. TRI-ANG 200 SERIES TIP TRUCK

470mm long red/blue pressed steel Tri-ang NZ, Series 200 Tip Truck, with stickers to sides, Tri-ang Transport Made in New Zealand by Lines Bros Ltd Auckland, surface rust, paint loss/wear, mud on tyres, Very Good 8/10



**158. TRI-ANG  
DIESEL SERIES  
MILITARY  
TRUCK**

460mm long, army green pressed steel, Tri-ang Diesel Series Military Truck, (English assembled model), cloth covers and supports not original surface rust, paint loss/wear, scratches to drivers door area, minor dints, Good 7/10



**162. TRI-ANG THAMES TRADER FIRE ENGINE**

410mm long, red pressed steel with diecast cab, Tri-ang Thames Trader Fire Engine, with one plastic fireman, Tri-ang & Tri-ang Fire service decals to sides, ladder mechanism not working, (needs restringing) light surface rust, paint loss/wear, Good 7/10



**159. TRI-ANG BEDFORD SERIES CRASH TRUCK**

430mm long, red pressed steel, model 40719, Tri-ang Bedford Series Crash Truck, steel wheels, missing hook mechanism, light surface rust, light wear/paint loss, dints, Good 6.5/10



**163. TRI-ANG TRANSPORT VAN No. 200**

460mm long, red/white pressed steel, Triang Transport Van No. 200, (6517), original stickers to sides, rust, paint loss/wear, dints to front, Good 7/10

**160. TRI-ANG  
MOBILE JIB  
CRANE**

360mm long to end of crane out, orange pressed steel, Triang Mobile Jib Crane, 3 wheeler with home made hook, Tri-ang Made In New Zealand sticker to side, light surface rust, paint loss/wear, Good 6/10



**164. TRI-ANG JONES  
CRANE**

170mm x 380mm tall, red/black pressed steel, Tri-ang Jones Crane, model 40778, Tri-ang Made In New Zealand Sticker to side, with hook & Priestman Grab Bucket light surface rust, paint loss/wear, Good 8/10



**161. TRI-ANG SUPER JIB CRANE**

340mm long, orange pressed steel, Triang Super Jib Crane, 40774, with hook, with tracks, Tri-ang Made In New Zealand stickers, minor light surface rust, paint loss/wear, Very Good 8/10



**165. LINCOLN  
INDUSTRIES MADE  
IN NEW ZEALAND  
MATCHBOX AUSTIN  
PETROL TANKER**

57mm long box, red Mazac alloy, Austin Petrol Tanker in original box, Matchbox Series Miniature Metal Vehicles, Lincoln Industries Ltd Made In New Zealand, No 4503, the box has sellotape rip to one side, creases, small rip to ends, Good 7.5/10, the toy has very minor paint loss, Very Good 9.5/10





#### 166. POCKET PACK SERIES RACING CARS

74mm long plastic case, 63mm long car, gold/silver Mazac alloy, Pocket Pack Miniatures Racing Car, Made In New Zealand No.6 to underside, in original case, Lincoln International marked on case, minor marks Very Good 9/10 plus 74mm long plastic case, 63mm long car, green/silver Mazac alloy, Pocket Pack Miniatures Racing Car, MC.Larenford (McLaren Ford) GT R-104, Made In Hong Kong, Lincoln International marked on case, plastic case has damage, windscreen is loose, minor marks on car, Very Good 7/10 (2)



#### 167. POCKET PACK SERIES RACING CARS

74mm long plastic case, 63mm long car, blue/silver Mazac alloy, Pocket Pack Miniatures Racing Car, Lola-Climax GTR-101, Made In Hong Kong to underside, in original case that has damage, Lincoln International marked on case, minor paint loss, Very Good 8/10 plus 74mm long plastic case, 63mm long car, purple/silver Mazac alloy, Pocket Pack Miniatures Racing Car, Made In New Zealand No.4 to underside, in original case, Lincoln International marked on case, Eagle TIG (F1) to case, sticker minor marks, Very Good 9/10 (2)



#### 168. POCKET PACK SERIES RACING CARS

74mm long plastic case, 63mm long car, red/silver Mazac alloy, Pocket Pack Miniatures Racing Car, Made In New Zealand No.1 to underside, in original case, Lincoln International marked on case, minor marks Very Good 9/10 plus 74mm long plastic case, 63mm long car, blue/silver Mazac Pocket Pack Miniatures Racing Car, Made In New Zealand No.2 to underside, in original case, Lincoln International marked on case, minor marks, Very Good 9/10 (2)



#### 169. POCKET PACK SERIES RACING CARS

74mm long plastic case, 63mm long car, green/silver Mazac alloy, Pocket Pack Miniatures Racing Car, Made In New Zealand No.3 to underside, in original case, Lincoln International marked on case plastic case has damage, minor paint loss, Very Good 8.5/10 plus 74mm long plastic case, 63mm long car, white/silver Mazac alloy, Pocket Pack Miniatures Racing Car, Lotus B.R.M.H.16 GT R-105, to underside, Made In Hong Kong, Lincoln International marked on case plastic case has damage, minor paint loss on car, Very Good 8/10 (2)



#### 170. POCKET PACK SERIES RACING CARS

63mm long car, various colours Mazac alloy, Pocket Pack Miniatures Racing Cars, all marked Made In New Zealand to underside, left to right, No.1 x 2, No. 2, 3, 4, 5, major damage to rear wheels on a No.1, two are missing drivers, all have paint loss, two cars with metallic silver finish on top side, Good 6/10 (6)



#### 171. MOTORWAY MINI LAND ROVER ORIGINAL PACKAGING

40mm long, green in original packaging Mazac alloy, Motorway Mini, Land Rover, Lincoln International, Very Good 9/10



#### 172. MOTORWAY MINI UTILITY TRUCK, ORIGINAL PACKAGING

40mm long, blue in original packaging Mazac alloy, Motorway Mini, Utility Truck, Lincoln International, Very Good 9/10



#### 173. LINCOLN FORD MODEL T, IN ORIGINAL BOX

265mm x 120mm x 105mm boxed, blue/grey pressed tin, Lincoln Toys, Ford Model T, Open Car & Sedan, With Removeable Roof, Multi-Action, battery operated, with several features, (some not working) Made In Japan on console, marketed by Lincoln Toys New Zealand, pictured in a 1965 Lincoln Toys catalogue, (69/6d) box has one end off, some discolouring, rust around battery case, minor surface rust, minor paint loss/wear, Good 6.5/10





#### 174. LINCOLN FORD MODEL T, IN ORIGINAL BOX

265mm x 120mm x 105mm boxed, blue/grey pressed tin, Lincoln Toys, Ford Model T, Open Car & Sedan, With Removeable Roof, Multi-Action, battery operated, with several features, (not tested) was unopened in original wrapping, Made In Japan on console, marketed by Lincoln Toys New Zealand, includes a blue hydraulic jack minor marks on box, Excellent 9.5/10



#### 178. LINCOLN INTERNATIONAL BATTERY OPERATED POLICE CAR

230mm long box, blue/white plastic, Jaguar Police Car, Lincoln International, battery operated (not tested) in a Lincoln International Ambulance box, Made In Hong Kong to underside of car surface wear to box, small cracks to roof by Police sign, minor marks Very Good 8/10



#### 175. LINCOLN TOYS PIONEER AIRWAYS HELICOPTER

250mm x 110mm x 70mm box, red/black pressed tin, Mechanical Pioneer Airways Helicopter, Inter-city Helicopter Service, cat no. 2581, made by Linemar Toys Japan, marketed by Lincoln Toys, clockwork mechanism operates, helicopter blades rotate, & they fold up and can be removed for storage, box is in fragile condition, one end is loose, rear jockey wheel is loose, minor surface rust, minor paint loss/wear, Very Good 8/10



#### 179. LINCOLN TOYS FRICTION DRIVE AUSTIN A.40

110mm long, blue in original box diecast all metal, Lincoln Toys Authentic Scale Model Friction Drive Car, Model Austin A.40 Cat. No. 4050, Lincoln Industries Ltd Auckland NZ printed on box, minor marks to model, minor discolouring to box, Very Good 8.5/10



#### 176. WILLY WALKER IN ORIGINAL BOX

160mm x 140mm x 90mm, multicoloured box pressed tin, Willy Walker, The Mechanical/Clockwork Clown, "wind him up and watch him walk" mechanism wind up works but he doesn't walk, late 1940's, Lincoln Toys printed on box, marketed in New Zealand, end flaps from one end are missing, rest of box in good condition, minor surface rust, minor paint loss/wear, Good 7.5/10



#### 180. LINCOLN TOYS CLOCKWORK BUTCHER/FIRE DEPT

182mm long, multicoloured tin plate Billy Bull Butcher car printed on both sides, Lincoln Toys to passenger door, early 1950's, rust, paint loss/wear, Fair 5/10 plus 182mm long, multicoloured tin plate Fire Brigade Siren Truck, Lincoln Toys to drivers door, early 1950's, rust, paint loss/wear, Fair 6/10 (2)



#### 177. LINCOLN TOYS CLOCKWORK MOTORCYCLIST

150mm long, multicoloured tin plate clockwork motorcyclist, Lincoln Toys to both sides, c early 1950's mechanism working light surface rust, paint loss/wear, Very Good 8/10



#### 180A. LINCOLN TOYS CLOCKWORK RACING CAR

170mm long, multicoloured tin plate clockwork racing car, Lincoln Toys to rear, model T.66, early 1950's, mechanism not working, no base plate, light surface rust, paint loss/wear, Good 5/10



### 180B. LINCOLN TOYS CLOCKWORK RACING CAR

170mm long, multicoloured tin plate clockwork racing car, Lincoln Toys to rear, model T.66, early 1950's, mechanism working, Lincoln on wheels, light surface rust, paint loss/wear, Good 7/10



### 180C. LINCOLN TOYS CLOCKWORK RACING CAR

170mm long, multicoloured tin plate clockwork racing car, Lincoln Toys to rear, model T.66, early 1950's, mechanism working, Lincoln on wheels, minor light surface rust, paint loss/wear, Good 8.5/10



### 180D. LINCOLN TOYS CLOCKWORK POLICE/FIRE CHIEF

182mm long, multicoloured tin plate Police Siren Car, printed on both sides, Lincoln Toys to drivers door, early 1950's, rust, paint loss/wear, Fair 5/10 plus  
182mm long, multicoloured tin plate clockwork Fire Chief Siren Truck, Lincoln Toys to passengers door, early 1950's, clockwork mechanism not working, rust, paint loss/wear, Fair 5/10 (2)



### 181. MICRO MODEL JAGUAR, HOLDEN

diecast, Micro Models Produced from The Original Micro Tools By Micro Models Ltd P O Box 815 Christchurch from 1994-1998  
105mm long boxes  
Jaguar XK120 MM407  
Holden FZ Sedan MM512  
both mint in box, 10/10 (2)



### 182. MICRO MODEL FORDS

diecast, Micro Models Produced from The Original Micro Tools By Micro Models Ltd P O Box 815 Christchurch from 1994-1998  
105mm long boxes  
Ford Mainline Coupe Utility MM408  
Ford Customline Sedan Two Tone MM605  
both mint in box, 10/10 (2)



### 183. MICRO MODEL HOLDENS

diecast, Micro Models Produced from The Original Micro Tools By Micro Models Ltd P O Box 815 Christchurch from 1994-1998  
105mm long boxes  
Holden FE Sedan, MM604 plus  
Holden FX Sedan, Tas Police MM405  
both mint in box, 10/10 (2)



### 184. MICRO MODEL HOLDENS

diecast, Micro Models Produced from The Original Micro Tools By Micro Models Ltd P O Box 815 Christchurch from 1994-1998  
105mm long boxes  
Holden FE Coupe Utility NSW Works Dept, MM403  
Holden Ute security Services, MP401  
both mint in box, 10/10 (2)



### 185. MICRO MODEL HOLDEN & FORD

diecast, Micro Models Produced from The Original Micro Tools By Micro Models Ltd P O Box 815 Christchurch from 1994-1998  
105mm long boxes  
FC Holden Station Sedan MM516  
Ford Mainline Ute, Civil Aviation  
both mint in box, 10/10 (2)



### 186. MICRO MODEL HOLDENS

diecast, Micro Models Produced from The Original Micro Tools By Micro Models Ltd P O Box 815 Christchurch from 1994-1998  
105mm long boxes  
Holden FX Police Aus Victoria MM 012, missing aerial, minor paint loss  
Holden FC Special Wagon "White & Red" minor paint loss  
both Very Good 9/10 (2)



### 187. MICRO MODEL HOLDEN TAXI, POLICE

diecast, Micro Models Produced from The Original Micro Tools By Micro Models Ltd P O Box 815 Christchurch from 1994-1998  
105mm long boxes  
FJ Holden Taxi,  
FJ Holden Police, MM004  
both mint in box, 10/10 (2)





**188. MICRO MODELS BEDFORD SB BUS IN BOX**  
155mm long box, green/silver  
cast Mazac alloy, Limited Edition, Micro Model Bedford SB Bus, Model MM508, Chassis No. G/31, Prod MG 128, as new, 10/10



**193. MACKENZIE & BANNISTER TIP TRUCK**  
265mm long, red/blue sand cast aluminium, Jumbo Toy tip truck, with hydraulic tip system, made by MacKenzie & Bannister, Jumbo sticker to hood, in working order, rusty springs, minor wear/paint loss Good, 8/10



**189. MICRO MODELS MGA ROADSTER IN BOX "GOLDEN OLDIES"**  
100mm long box, yellow cast Mazac alloy, Micro model MGA Roadster, "Golden Oldies", Model MP503, Chassis No. G/32, Prod XI 562, Canterbury University Christchurch, 1995, as new, 10/10



**194. MACKENZIE & BANNISTER LOW LOADER WINCH**  
310mm long red/blue sand cast aluminium, Jumbo Toy articulated low loader with winch made by MacKenzie & Bannister, missing hook & loading ramp, partial sticker, minor paint loss/wear, Good 7.5/10



**190. MICRO MODELS FORD MK 1 ZEPHYR IN ORIGINAL PACKAGING**  
125mm long, black model cast Mazac alloy, Limited Edition, Micro Model Ford MK 1 Zephyr, NZ Ministry Of Transport, Ref 515, Chassis GB21, Prod No. PB 082, Rimu base, plastic cover with box, unopened Excellent 10/10



**195. MACKENZIE & BANNISTER LOW LOADER WINCH & RAMP**  
430mm long with ramp out, red/blue sand cast aluminium, Jumbo Toy articulated low loader with winch and original ramp, made by MacKenzie & Bannister, paint loss/wear, Good 7/10



**191. MACKENZIE & BANNISTER TRACTOR & TRAILER**  
400mm long, tractor with trailer, red/blue sand cast aluminium, Jumbo Toy Tractor & Trailer, Tractor Model 407 (Bulldozer), with operating mechanism, made by MacKenzie & Bannister, Jumbo sticker to top of engine minor paint loss/wear, Good 8/10 plus trailer that has repainted, Very Good 8/10 (2)



**196. MACKENZIE & BANNISTER RABBIT CART**  
170mm long blue/orange sand cast aluminium, rabbit towing trailer, made by MacKenzie & Bannister, remains of Jumbo sticker to cart, minor wear/paint loss, Very Good, 8/10



**192. MACKENZIE & BANNISTER ARTICULATED DITCH DIGGER**  
310mm long, red/yellow sand cast aluminium, Articulated Ditch Digger made by MacKenzie & Bannister, in working order, wear/paint loss, Good, 7.5/10



**197. JOYTIME GRADER**  
275mm long, red, sand cast aluminium, Grader, sticker to rear body, Another JOYTIME Toy Regd Trade Mark, (ex M&B, in working order, paint loss, minor wear, minor marks, Good 7.5/10



**198. JOYTIME FORKLIFT**  
250mm long, red, sand cast aluminium, Forklift, sticker to rear body, Another JOYTIME Toy Regd Trade Mark, (ex M&B), in working order, minor marks, Very Good 8/10



**203. HERCULES NZ TOY SHEEP TRUCK TWIN DECK**  
310mm long, red/fawn pressed steel, Hercules, New Zealand Twin Deck Sheep Truck, missing grill dints to back frame, surface rust, paint loss/wear Good 6.5/10



**199. JOYTIME FORKLIFT**  
250mm long, orange, sand cast aluminium, Forklift, partial sticker to rear body, Another JOYTIME Toy Regd Trade Mark, (ex M&B), in working order, forks are bent, minor marks, Very Good 6.5/10



**204. HERCULES NZ TOY TRACTOR**  
310mm long red/yellow pressed steel, Hercules, New Zealand Tractor, Hercules Toys impressed to front grill and at rear, and on engine block, light surface rust, minor paint loss/wear Good 8/10



**200. LINCOLN SUPER HERCULES NZ TOY TIP TRUCK**  
285mm long, red/yellow pressed steel, Lincoln Super Hercules Tip Truck, rear wheel have been replaced, front wheels are rubber indicating Lincoln manufacturer, rust, paint loss/wear Good 6/10



**205. HERCULES NZ TOY BULLDOZER**  
350mm long red/green/yellow pressed steel, Hercules, New Zealand Bulldozer, Hercules Toys impressed to front grill and at rear, and on engine block, with tracks, (extremely rare to find tracks) rust, paint loss/wear, Good 7/10



**201. HERCULES NZ TOY MILITARY TANK**  
245mm long, green/cream pressed steel, Hercules, New Zealand Military Tank, Hercules Toys sticker on turret, missing tracks light surface rust, minor paint loss/wear Good 7.5/10



**206. HERCULES NZ TOY STEAM ROLLER**  
285mm long green/yellow/red pressed steel, Hercules, New Zealand Steam Roller, Hercules Toys impressed to front grill and at rear, Hercules Toys decal on flywheel, surface rust, paint loss/wear Good 7/10



**202. HERCULES NZ TOY TELEPHONE**  
175mm long, green/red dial pressed steel, Hercules, New Zealand Telephone, Hercules Toys decal to rear, spring loaded working dial, rust, paint loss/wear Good 6.5/10



**207. HERCULES MECHANICAL SHOVEL EXCAVATOR**  
215mm long, x 285mm tall, red/yellow/green pressed steel, Hercules Mechanical Shovel Excavator, 2 axle version light surface rust, paint loss/wear, Very Good 8/10





### 208. HERCULES MECHANICAL SHOVEL/EXCAVATOR

215mm long body x 300mm tall, green/yellow pressed steel, Hercules Mechanical Shovel Excavator with Hercules Toy sticker to cab roof, 3 axle version, possibly originally with tracks all over rust, only minor remains of original paint, wear, Fair 5/10



### 209. HOMEMADE TIN TRUCK

305mm long x 145mm tall Dark Green Home made pressed tin/ wood toy truck, with wood to doors, Peter hand painted to the doors, NZ-25124 to the front, Tare 2T13c I to one side, metal wheels light surface rust, minor marks, Very Good 8/10



### 210. TARGET TOYS BREAKDOWN TRUCK

300mm long, red/blue/yellow pressed steel, Target Toys Breakdown Truck, assembled in New Zealand (in Tonka Factory) from ex Canadian Molds (Husky to front number plate area) for Sargood Son & Ewen Ltd, Target stickers to both sides, doors and tray sides, with hook minor surface rust, marks, Very Good 9/10



### 211. TARGET TOYS TIP TRUCK

290mm long, red/blue/yellow pressed steel, Target Toys Tip Truck, assembled in New Zealand (in Tonka Factory) from ex Canadian Molds (Husky to front number plate area) for Sargood Son & Ewen Ltd, partial Target stickers to both sides, one door and tray sides, tipping mechanism works, 2 axle version minor surface rust, paint loss/ wear, Good 7/10



### 212. TARGET TOYS TIP TRUCK

320mm long, red/blue/yellow pressed steel, Target Toys Tip Truck, assembled in New Zealand (in Tonka Factory) from ex Canadian Molds (Husky to front number plate area) for Sargood Son & Ewen Ltd, no stickers on this example, tipping mechanism works, with tailgate, 3 axle version tray has been repainted, some dints, surface rust, paint loss/ wear, Good 6/10



### 213. TRI-ANG 000 SERIES TIP LORRY

180mm long, red/blue pressed steel, Tri-ang 000 Series Tip lorry, tip mechanism works, minor surface rust, minor paint loss/wear, Very Good 8.5/10 plus 180mm long, green/red pressed steel, Tri-ang 000 Series Tip lorry, tip mechanism works, missing wheels, 180mm long, red/blue pressed steel, rust/paint loss/wear, Fair 3/10 (2)



### 214. PENGUIN LONG RANGE CLOCKWORK CABIN CRUISER

290mm long boxed toy plastic toy/cardboard box, Penguin Series 4, Long Range Clockwork Cabin Cruiser, Made In N.Z. by Lines Bros. (N.Z.) Ltd Tri-ang Works, Auckland, clockwork mechanism is working distortion & some discolouration to plastic body of boat, some damage to box, tape to inside of box, Good 6.5/10



### 215. TRI-ANG BOXED MINIC SERIES 2 CLOCKWORK POWERED SHERMAN TANK

225mm long box, 290mm long to end of barrel toy, green plastic body, Tri-ang Minic, Series 2, Clockwork Powered one track melted the other is in good condition, no key, clockwork mechanism not tested, damage to box, Fair 5/10



### 216. TRI-ANG MINIC TRANSPORT LORRY

310mm long toy, 230mm long box, red/green tin plate, Tri-ang Minic Scale Model Transport Lorry, Push & Go mechanism, (not working) Made In N.Z. By Lines Bros (N.Z) Ltd Auckland, marks to box, minor rust/paint loss, Very Good 8/10



### 217. TRI-ANG MINIC TOYS PUSH & GO 000 SERIES MODELS

plastic toys, all Tri-ang Minic Push & Go Series 000, all approx 75mm left to right Tarpaulin Lorry Petrol Tanker Petrol tanker (incorrect front wheels) Cement lorry Removal Van Container Lorry, Push & Go Mechanisms all working Very Good 7/10 (6)



### 218. TRI-ANG MINIC DELIVERY VAN BOXED

Tri-ang plastic push & go vehicle in original box  
170mm green Tri-ang Minic Major model M215, Delivery Van, PG 00 Series, Express stickers to sides, partially lifting, box is marked, Made In New Zealand Lines Bros. (N.Z.) Ltd  
mechanism not working, Good 8.5/10



### 219. TRI-ANG MINIC CLOCKWORK JEEP No 2

160mm long, colourful box, khaki  
Pressed steel, Tri-ang Minic Jeep No. 2, Series 2 toy, clockwork mechanism not tested, model 208M, box has Made In New Zealand By Lines Bros (N.Z.) Tamaki Auckland E.2, possibly missing jerry can to rear, box flaps detached, Toy in Very Good condition, 8/10



### 220. TRIANG MINIC FIRE FIGHTER

230mm long box, red/orange plastic, Tri-ang Minic Scale model Fire Fighter, Push & Go mechanism, (partially working) Made In N.Z. By Lines Bros (N.Z.) Ltd Auckland, Fitted With Inertia Drive Motor & Siren, (untested) ladder mechanism fully operable, water bladder perished, missing roof bells, & additional firemen, break in side windscreen, minor fading to roof area, minor marks, minor marks to box, 7/10



### 221. TRIANG CLOCKWORK NOVELTIES

130mm long, black cat, yellow/black butterfly plastic with rubber tail, Tri-ang Made In England mark on chest, cat with a butterfly in front of the cats face, clockwork mechanism, no key so untested, minor marks, Very Good 8.5/10 plus  
120mm blue plastic, marked Tri-ang Minic Made in England Great Spider to underside, clockwork mechanism, no key so untested, (spider only has 4 legs) minor marks, Very Good 8.5/10 (2)



### 222. TRI-ANG MINIC TOYS PUSH & GO 000 SERIES MODELS

plastic toys, all Tri-ang Minic Push & Go Series 000, all approx 75mm left to right  
Tarpaulin Lorry x 2  
Petrol Tanker  
Cement Lorry  
Radar Van (missing aerial)  
Anti Aircraft (missing gun)  
Coach  
Push & Go Mechanisms all working apart from the AA gun model  
Very Good 7/10 (7)



### 223. TRI-ANG MINIC POLICE CAR & AMBULANCE

Tri-ang plastic push & go vehicles  
125mm long, black, Police Van, model 45043, Police & MP (Metropolitan police?) ER decal to sides, rear wheel lose on axle, mechanism not working, Good 7.5/10 plus  
130mm long, white Ambulance, M 216, (Model 3129), PG 00 series, mechanism working, Very Good, 8/10 (2)



### 224. TRI-ANG MINIC PLASTIC VEHICLES

Tri-ang Minic plastic vehicles  
90mm long orange, Tri-ang Dump clockwork Truck, Tri-ang Minic Toys Made In England to underside, no key so untested, Very Good 8.5/10 plus  
105mm long box, blue vehicle Tri-ang Morris Minor, push And Go, model 97M, box has Clockwork but with over sticker saying Push and Go, made by Lines Bros (N.Z.) Ltd Tamaki Auckland in New Zealand, flap missing from one end, Very Good 8/10 (2)



### 225. TRI-ANG MINIC RACING CARS

Tri-ang plastic push & go racing cars  
110mm long red Le Mans Racing Car, PG 0000 series, model 3111 plus  
110mm long green, Ferrari, PG 0000, model 3112  
mechanisms not working on either, both Good 7/10 (2)



### 226. TRI-ANG MINIC MERCEDES, JAGUAR

Tri-ang plastic, push & go racing cars  
155mm long, grey Mercedes, Tri-ang Made In England to underside, mechanism is working, grill in front of driver missing, Good 6.5/10 plus  
145mm long red, Jaguar XK120, Series 1, colour is faded, missing steering wheel, missing hood, Good 6/10 (2)



### 227. TRI-ANG MINIC DELIVERY VAN & TAXI

Tri-ang Minic Major plastic push & go vehicles

133mm green Tri-ang Delivery Van, model M 215, PG 00 Series, Express sticker to one side mechanism not working, Good 6.5/10 plus

140mm white Tri-ang Taxi, M 218, PG 00 series, front axle lose, broken plastic to underside, discolouring, mechanism not working, Good 6/10 (2)



### 231. TONKA PRESSED STEEL CAR CARRIER

690mm long, yellow

pressed steel Tonka Car Carrier, Tonka stickers to both sides, Tonka Mound, Minn stickers to cab doors, Made Under Licence In New Zealand for Tonka U.S.A. sticker to underside of cab, missing back tail gate, hitching pin not original, wear/paint loss, surface rust, Good 7/10



### 228. TRI-ANG MIGHTY MINI TRUCKS

Left to right, 140mm long, yellow/blue/red lightweight pressed steel/plastic, Tri-ang Toys Mighty Mini, High Lift Platform, (TM6655) forward tipping cab, mechanism working, Tri-ang Made In New Zealand sticker to underside, minor surface rust, light wear/paint loss, 7/10 plus 120mm red/white lightweight pressed steel/plastic, Tri-ang Toys Mighty Mini, Fire Engine, (TM6651) forward tipping cab (sticking), ladder extends & turns, minor surface rust, light wear/paint loss, 7.5/10 plus 135mm yellow/red lightweight pressed steel/plastic, Tri-ang Toys Mighty Mini, Tipper Truck, (TM6656) forward tipping cab (not working) tipper works, Tri-ang Made In New Zealand sticker to underside, minor surface rust, light wear/paint loss, 7/10 (3)



### 232. TONKA MIGHTY WRECKER TRUCK

410mm long x 290mm tall,

white/red pressed steel, Tonka Mighty Wrecker, 3915 missing right hand headlights, paint touch-ups to lower body, crack to perspex windscreen, minor marks, light surface rust, Very Good 8/10



### 229. TRI-ANG MIGHTY MINI TRUCKS

Left to right, 135mm long yellow/red lightweight pressed steel/plastic, Tri-ang Toys Mighty Mini, Shovel, (TM6654) forward tipping cab, mechanism of shovel working, Tri-ang Made In New Zealand sticker to underside, minor surface rust, light wear/paint loss, 7/10 plus 120mm yellow/red lightweight pressed steel/plastic, Tri-ang Toys Mighty Mini, Dumper (TM6650) forward tipping cab, Tri-ang Made In New Zealand sticker to underside, minor surface rust, light wear/paint loss, 8/10 plus 135mm yellow/red lightweight pressed steel/plastic, Tri-ang Toys Mighty Mini, Tipper Truck, (TM6656) forward tipping cab, tipper works, Tri-ang Made In New Zealand sticker to underside, minor surface rust, light wear/paint loss, 8.5/10 (3)



### 233. TONKA TIP TRUCK

330mm long, red/yellow, pressed steel Tonka Tip Truck, Tonka New Zealand sticker to cab doors, Tonka NZ on wheels, wear/paint loss, surface rust, broken windscreen, Good 7/10

### 230. TRI-ANG MIGHTY MINI TRUCKS

Left to right, 175mm long box, yellow/blue/red lightweight pressed steel/plastic, Tri-ang Toys Mighty Mini, High Lift Platform, (TM6655) forward tipping cab, mechanism working, Tri-ang Made In New Zealand sticker to underside, minor surface rust, light wear/paint loss, 8.5/10 plus

120mm yellow/blue lightweight pressed steel/plastic, Tri-ang Toys Mighty Mini, Compressor Truck (TM6653) forward tipping cab, Tri-ang Made In New Zealand sticker to rear of cab, minor surface rust, light wear/paint loss, 7/10 plus 125mm yellow/red lightweight pressed steel/plastic, Tri-ang Toys Mighty Mini, Cement Mixer (TM6657) forward tipping cab, minor surface rust, light wear/paint loss, 8.5/10 (3)



### 234. TONKA PRESSED STEEL CRANE TRUCK

370mm long body x 465mm to top of crane, orange pressed steel Mobile Crane model 2960, with Turbine Cab, stickers to both sides, Tonka New Zealand stickers to cab doors, Tonka impressed mark to sides of body, inside the cab & tyres minor surface rust, paint loss/wear, Good 7.5/10

### 235. LINCOLN? TOY CRANE

180mm long wheel to wheel, x 260mm tall, green/black pressed steel, Lincoln? Crane with Lincoln wheels, with home made wrecking ball repainted green over red, black roof has also been repainted, surface rust, paint loss/wear, Fair 5/10





**236. LINCOLN  
SUPER HERCULES  
BREAKDOWN  
TRUCK**

280mm long red/cream/blue pressed steel, Lincoln Super Hercules Breakdown Truck, (originally Wyn-Toys Australia), Day & Night Breakdown Service printed to sides, Lincoln Toys stickers to doors, Lincoln impressed wheels, no hook, surface rust marks, wear/paint loss, Good 7.5/10



**241. LINCOLN SUPER  
HERCULES 4224  
GRADER**

420mm long, yellow pressed steel, Lincoln Super Hercules Grader, model 4224, Lincoln Toys stickers to both sides, surface rust, paint loss/wear Good 7.5/10



**237. TIGER TOYS  
TRACTOR WITH  
SCOOP**

280mm long red, unopened bag, cast alloy/pressed steel, Tiger Toys Tractor with front scoop, Tiger Toys 2008 CLP (NZ) (reproduction) unused in original unopened bag, with sticker of a tiger to front of engine excellent 10/10



**242. LINCOLN SUPER  
HERCULES PRESSED  
STEEL CAR CARRIER**

520mm long red/yellow/green pressed steel Lincoln Super Hercules (ex Wyn Toys Australia) Articulated Car Carrier, Lincoln Toys sticker to cab doors, possibly tail gate missing, rust, paint loss/wear Good 7/10



**238. TIGER TOYS  
TRACTOR WITH  
FRONT SCOOP**

275mm long red/blue/gold cast alloy/pressed steel, Tiger Toys Heavy Tractor with front scoop, 2 partial Tiger Toys stickers, surface rust/minor paint loss, wear, Very Good 8/10



**243. TOY CASH  
REGISTERS**

187mm tall x 155mm wide x 185mm deep, red pressed steel, Jomax No. 285, toy cash register in working order, missing one plastic price button, light surface rust, wear/paint loss, Good 7/10 plus 180mm tall x 182mm wide x 163mm deep, grey plastic, Lincoln toy cash register in working order, No. 3301, Made In Hong Kong to base minor wear, Very Good 8.5/10 (2)



**239. TIGER TOYS  
TRACTOR WITH  
BACK POST HOLE  
DIGGER**

280mm long, red/blue cast alloy, Tiger Toys Tractor with Post Hole digger, surface rust on auger, extensive paint loss/wear, Good 6.5/10



**240. LINCOLN SUPER  
HERCULES 4224  
GRADER**

420mm long, white/red, pressed steel, Lincoln Super Hercules Grader, model 4224, surface rust, paint loss/wear Good 7/10



**244. LINCOLN NZ  
ASSOCIATED  
PLASTIC TOYS**

510mm long, red/blue plastic, Articulated Mobil Petrol Tanker, Mobiloil to both sides & Mobil to rear, Lincoln Wheels, missing grill & windscreen, dint to left rear of tank, minor damage to stickers, minor marks, Good 6.5/10 plus 325mm long, red blow-moulded plastic (Humber Hawk) Fire Car, motorised Push N Go mechanism, Fire sticker to roof, Smash Proof Motorized sticker to boot lid, pictured in Lincoln catalogue, minor marks, Very Good 8/10 plus 185mm long, red/white plastic, Can-Am type Racing Car, marked Lincoln International, made in Hong Kong on base, motorised mechanism not working, sun faded to the red, minor marks, Good 6.5/10 (3)





#### 245. PLASTIC TOYS

355mm long, yellow plastic blow moulded, locomotive, Toltoys to side, label to top, Whistling Loco Squeeze To Toot, (working) Made Under Licence For Pearce & Drum Ltd Auckland, missing back wheels, damage to front, Good 6/10 plus,  
220mm long, yellow/white/red, plastic cement mixer, no markings, unknown maker, minor marks, Very Good 8/10 plus  
210mm long, red/yellow plastic tip truck, (Euclid) no markings, unknown maker, minor marks, play worn, Good 7/10 (3)

#### 246. LINCOLN INTERNATIONAL RACING CARS & BIKE



Lincoln international racing cars & bike  
150mm long yellow, in box plastic Chequered Flag Series, BRM Racer, Friction Drive in working order, Empire Made (Hong Kong) Lincoln International, some storage wear to box, Very Good 8/10 plus  
215mm long, green, in box plastic, Lincoln International Ferrari Racing Car, Friction Drive, in working order, missing driver & windscreen, racing number 7 decal partially missing, box is in poor condition, car Good 7/10 plus  
175mm packaged red car plastic, Lincoln International High Rev Slot Racing Grand Prix Car, bubble pack unopened, Very Good 8.5/10 plus  
230mm long packaged multi-coloured bike plastic, Lincoln International Hot Finger Bike, bubble pack unopened, untested, Very Good 8.5/10 (4)

#### 247. STAR TOYS NZ MADE PRESSED METAL CLOCKWORK TIP TRUCK



235mm long, red silver pressed metal, Star Toys N.Z. made Clockwork Tip Truck, Star Made In NZ, little is known about this company, tipper & clockwork mechanism is working, in original plain cardboard box, marked only with price  
box is fragile, fair 5/10, toy is in original condition, Very Good 9.5/10

#### 248. STAR TOYS NZ MADE PRESSED METAL CLOCKWORK SHELL TANKER



230mm long, red/yellow pressed metal, Star Toys N.Z. made Clockwork Shell Tanker, Star Made In NZ sticker to one door, little is known about this company, clockwork mechanism is working, in original plain cardboard box, marked only with original price of 14/6, crossed out with new 6/6 price & the word Petrol stamp to one end box is fragile, fair 5/10, toy is in original condition, minor wear on top cab & tank, from rubbing on box, crayon 14/6 price to back of tank, Very Good 9/10



#### 249. STAR TOYS NZ MADE PRESSED METAL CLOCKWORK CAR

165mm long, red with black windows, orange wheels pressed metal, Star Toys N.Z. made Clockwork Car, Star Product Made In NZ sticker to front grill, little is known about this company, clockwork mechanism is working, left front wheel has been attached back to front, pencil marks to base in original condition, minor wear/paint loss, Very Good 8/10



#### 250. PROTEX DELUXE SPORTS ROADSTER IN ORIGINAL BOX

280mm x 100mm x 75mm, red, with original box plastic DeLuxe Sports Roadster, A Protex Toy, No. K12, Made In New Zealand By Plastic Moulders N.Z. Ltd Auckland, minor marks to box, Very Good 9/10



#### 251. PROTEX DELUXE SPORTS ROADSTER IN BOX

280mm x 100mm x 75mm, green, in box plastic/tin, DeLuxe Sports Roadster, A Protex Toy, in a Protex box for a Speed-Cops car, Made In New Zealand By Plastic Moulders N.Z. Ltd Auckland, friction motor (working), box in fragile condition, toy has damage to front bumper, with crack to front right hand side, Good 7/10



#### 252. CHRISTCHURCH MADE TRUCK & TRAILER IN ORIGINAL BOX

230mm x 65mm x 50mm, blue with original box hard plastic, sturdy plastic Truck & Trailer, model 852, made by H.C. Urlwin, Plastics Division, Waltham Christchurch, N.Z., an important find, showing an example of an early New Zealand made plastic toy, c1950's?, in original paper packing, minor rips to box, toy in excellent condition, Very Good 9/10



#### 253. CHRISTCHURCH MADE TRUCK & TRAILER

225mm long, blue/light green hard plastic, (sturdy plastic Truck & Trailer, model 852, made by H.C. Urlwin, Plastics Division, Waltham Christchurch, N.Z.) c1950's?, blue one has broken rear end and wheel, toe ball on trailer is broken, Fair 4/10 plus  
light green has minor plastic loss on front right hand wheel arch, different attachment, on trailer to the other example, Very Good 8/10 (2)



**254. YESTERYEAR TOY CO LIMITED VOLKSWAGEN BEETLE**  
220mm long, red/yellow plastic, Yesteryear Toy Co Limited Volkswagen Beetle, no markings on toy, in plastic bag with header, Made In New Zealand on header, bag is unsealed  
Very Good 9/10



**255. YESTERYEAR TOY CO LIMITED VOLKSWAGEN BEETLE**  
220mm long, red/blue plastic, Yesteryear Toy Co Limited Volkswagen Beetle, no markings on toy, in plastic bag with header, Made In New Zealand on header, bag is sealed  
Very Good 9/10



**256. PORANA PLASTICS NZ MADE FARMALL TRACTOR**  
225mm long, yellow/blue hard plastic, Porana Plastics Farmall Tractor, an Auckland based company 1983-1992, steering wheel has been glued on at a later date from manufacture  
Very Good 8/10



**257. PROTEX PLASTIC TOY TRUCKS & TRACTOR**  
all plastic models, yellow/green No.7, Petrol Wagon in original box, Made In New Zealand Plastic Moulders N.Z. Ltd Subsidiary of National Brush Co. (N.Z.) Ltd Auckland, Very Good 9/10 plus  
2 x 110mm long yellow/green & green Petrol Wagons, both missing top caps & drain plug, green one has had the tank reglued back on, Good 6.5/10 plus  
105mm long, red/white No. 1 tip truck, Very Good 9/10 plus  
2 x 110mm long No. 6 fire engine, both missing ladders & hose attachment, Good 6/10 plus  
75mm long orange/green, No. 5 tractor, Very Good 9/10 (7)



**258. TRI-ANG MINI HIGHWAY RALLY CAR & RACING CAR**  
165mm long, red diecast with pressed steel base, Tri-ang Mini Highway Rally Car model MH37 Alpine, underbody marked Tri-ang made in England and N.Z., missing driver, partial sticker to rear, some wheel rims have a melted appearance, minor paint loss/marks, Very Good 6.5/10 plus  
180mm long, red/blue diecast Tri-ang Mini Highway Racing Car model MH18, Monza, underbody marked Tri-ang made in New Zealand, missing windscreen, wear to silver engine & exhausts, minor paint loss/marks, Very Good 7/10 (2)



### 259. TRI-ANG SERIES 0000 PLASTIC PUSH & GO CARS

all plastic push & go cars, left to right  
70mm long yellow Rolls Royce plus  
70mm long green Jaguar plus  
60mm long blue Vauxhall plus  
70mm long blue Bentley  
mechanism working on all but sticky on Vauxhall, Very Good 9/10 (4)



### 260. TRI-ANG MINI HIGHWAY SERVICE TRUCK & UTILITY TRAILER SET

180mm long, red/white pressed steel/plastic, Tri-ang Mini Highway Service Truck with crane, model MH2, marked Tri-ang Made In NZ to underside, some wheel rims have a melted appearance, minor surface rust/paint loss/marks, Good 7.5/10 plus  
305mm long, green/white pressed steel/plastic, Tri-ang Mini Highway Utility Trailer Set, model MH3, marked Tri-ang Made In NZ to underside of Land Rover, some wheel rims have a melted appearance, minor surface rust/paint loss/marks, Very Good 8/10 (3)



### 261. TRI-ANG MINI HIGHWAY MH4 RACING CAR TRAILER SET

355mm long, brown/black/white pressed steel/plastic, Tri-ang Mini Highway MH4 Racing Car Trailer Set, Mini Highway Grand Prix Racing Team stickers to sides of Land Rover, marked Tri-ang Made In NZ to underside, the racing car is pressed steel with diecast chassis, marked Tri-ang Made In New Zealand to underside, (MH21) with 3 Pukekohe sticker to front, some wheel rims have a melted appearance, minor paint loss/marks, Very Good 7.5/10 (2)



### 262. MAGIC ACTION BULLDOZER IN ORIGINAL BOX

260mm x 150mm x 100mm, multi coloured box pressed steel, Magic Action Bulldozer, model 2477, battery operated, with several features, battery operated (not tested) marketed by Lincoln Toys, and features in their catalogues, c1960's minor rips & marks to box, minor light surface rust, minor paint loss/wear, Very Good 9/10





**263. LINCOLN LONDON TRANSPORT DOUBLE DECKER BUS**  
300mm long, red plastic, Double Decker Bus, London transport to sides, 12 Piccadilly Circus, Junior Engineer on T.V. Lincoln Power Steering sticker to front, BOAC & Heinz advertising to sides, made in Hong Kong to base, friction drive is working, remains of stickers to wheels minor marks & wear, Very Good 8.5/10



**267. RACING CAR, MADE IN JAPAN**  
255mm long red/yellow pressed tin, No. 57, Racing Car, Made In Japan on console and on one side, believed to have been marketed by Lincoln Toys light surface rust, paint loss/wear, Good 7.5/10



**264. NODDY MAGIC ACTION CAR, BOXED**  
240mm x 125mm tall x 140mm, multicoloured boxed plastic, Noddy Magic Action Car, battery operated, (not tested) Lincoln International, Cat No. 7700, Made In Hong Kong minor wear/marks to box, Very Good 8/10



**268. RACING CAR, MADE IN JAPAN**  
255mm long blue/grey pressed tin, No. 31, Jet Racer, Made In Japan on console, Dott G.R. to one side, (a Japanese Toy Maker), believed to have been marketed by Lincoln Toys light surface rust, paint loss/wear, Very Good 8/10



**265. LINCOLN INTERNATIONAL HEAVY DUTY BULLDOZER IN ORIGINAL BOX**  
280mm x 210mm x 130mm, multi coloured box plastic with tin base, Lincoln International Heavy Duty Bulldozer, Cat. 7002, An Empire Made Lincoln International Product, Made In Hong Kong sticker to base, battery operated with electronic hand control, not tested, rips to one corner of cardboard box, minor marks, minor light surface rust to base, one arm of the blade is unattached, one air cleaner broken, minor wear, Very Good 7/10



**269. RACING CAR, MADE IN JAPAN**  
255mm long red/yellow pressed tin, No. 3, Racing Car, Made In Japan on console, believed to have been marketed by Lincoln Toys very minor surface rust, paint loss/wear, Very Good 8.5/10



**266. ARNOLD CANDIDAT CAR**  
250mm long, red pressed tin, Candidat Car, Arnold Made In Germany U.S. Zone, Candidat marked to underside, and marketed by Lincoln Toys, clockwork mechanism not tested, missing windscreen, steering wheel is lose, minor surface rust/paint loss, minor marks, Good 7/10



**270. ARNOLD FIRE CHIEF CAR**  
250mm long, red pressed tin, Fire Chief car, believed to be Arnold Toys Germany but no markings, marketed by Lincoln Toys, minor surface rust/paint loss, minor marks, Good 8/10



### 271. LINCOLN INTERNATIONAL POWER BULLDOZER, DEEP SEA CRUISER IN BOXES

155mm x 115mm x 80mm, original multicoloured box plastic, Battery Operated power Bulldozer, Lincoln International, Forward and reverse Drive, "Chrome Motor" Made In Hong Kong, marketed by Lincoln International, Cat. No. 5988, with driver, (not tested)

box and toy both Very Good 9/10plus

285mm long box, multicoloured plastic, Battery Powered Deep Sea Cruiser, Made in Hong Kong marketed by Lincoln International, box is tatty, some rips and marks, Good 6/10, toy is in as new condition, (untested) Very Good 9/10 (2)



### 273. PACKING CASE SERIES CARS, LINCOLN TOYS

90mm green Austin Cambridge, 105mm red Standard Vanguard, both plastic marked Packing Case Series, Empire Made (Hong Kong), marketed by Lincoln Toys, c1950's/60's, approx 1/43 scale, mark to roof of red car, Very Good 8/10 green car Very Good 9.5/10 (2)



### 274. LINCOLN INTERNATIONAL REMOTE CONTROLLED CONCRETE MIXERS

2 x 210mm long orange plastic with steel base plate, Remote Controlled Concrete Mixers, Empire Made (Hong Kong) Marketed by Lincoln International, both with untested remote controllers, some rust to battery cover to one, minor marks & wear, Good 7/10 (2)



### 275. MICRO MODEL TORRO ISSUE INTERNATIONAL DELIVERY VAN, BREAKDOWN TRUCK

105mm long, red/white/blue cast Mazac alloy, Micro Models, Torro issue, International Delivery van, GB8, missing back doors, but with windows, (only happened with the Torro series) minor marks, Very Good 8.5/10 plus

120mm long, red/yellow cast Mazac alloy, Micro Models, Torro issue, International Breakdown Truck, GB23, window until lose in cab minor marks, Very Good 8/10 (2)



### 276. MICRO MODEL MATAI ISSUE CHRYSLER, VAUXHALL

100mm long, gold/blue cast Mazac alloy, Micro Models, Matai issue Chrysler G/40 minor marks, Very Good 9/10 plus

100mm long, lime green cast Mazac alloy, Micro Models, Matai issue, Vauxhall G35 minor marks, Very Good 8.5/10 (2)



### 277. MICRO MODEL MATAI ISSUE INTERNATIONAL DRINKS TRUCK, BREAKDOWN TRUCK

100mm long, red/white cast Mazac alloy, Micro Models, Matai issue, International Drinks Truck GB-16, divider is missing, minor marks, some paint loss, Good 6.5/10

120mm long, brown/gold cast Mazac alloy, Micro Models, Matai issue, International Breakdown Truck, GB23, minor marks, Very Good 8.5/10 (2)



### 278. MICRO MODEL MATAI ISSUE CHRYSLER, HOLDEN

100mm long, blue/silver cast Mazac alloy, Micro Models, Matai issue Chrysler G/40 minor marks/wear, Very Good 8/10 plus

100mm long, red cast Mazac alloy, Micro Models, Matai issue, Holden Sedan G33 minor marks, Very Good 9/10 (2)





**279. MICRO MODEL MATAI/LINCOLN ISSUE HOLDEN SEDAN, INTERNATIONAL DRINKS TRUCK**  
100mm long, golden cast Mazac alloy, Micro Models, Matai issue, Holden Sedan G33 minor marks, Excellent 9.5/10 plus  
100mm long, red cast Mazac alloy, Micro Models, Matai issue, International Drinks Truck GB-16 minor marks, Very Good 9/10 (2)



**283. MICRO MODEL MATAI/LINCOLN ISSUE CHRYSLER, HOLDEN FC STATION WAGON**  
100mm long, green cast Mazac alloy, Micro Models, Lincoln issue Chrysler G/40 repainted, base is disconnected from body, slightly different wheels Good, 6/10 plus  
100mm long, red cast Mazac alloy, Micro Models, Matai issue, Holden FC Station Wagon, no model number on underside but it is a G42 Excellent 9.5/10 (2)



**280. MICRO MODEL MATAI ISSUE INTERNATIONAL DRINKS TRUCK, BREAKDOWN TRUCK**  
100mm long, brown cast Mazac alloy, Micro Models, Matai issue, International Drinks Truck GB-16 minor marks, Very Good 9/10  
120mm long, white/green cast Mazac alloy, Micro Models, Matai issue, International Breakdown Truck, GB23, minor marks, Very Good 8.5/10 (2)



**284. LINCOLN DIECAST CARS**  
All Lincoln Diecast Push And Go Cars, all with working mechanisms, left to right  
97mm green Austin A40 Somerset Model 4050, front window pillar has a crack, repainted to a fair standard, Good 7/10 plus  
108mm red American Buick, model 4051, paint loss, 7.5/10 plus  
108mm green American Buick, model 4051, very minor paint loss/marks, 9/10 plus  
97mm long, blue Ford Prefect 100E, model 4052, very minor paint loss/marks, 9/10 (4)



**281. MICRO MODEL MATAI ISSUE INTERNATIONAL DELIVERY VAN, BREAKDOWN TRUCK**  
120mm long, brown/green cast Mazac alloy, Micro Models, Matai issue, International Breakdown Truck, GB23, minor marks, Very Good 9/10  
105mm long, red/white cast Mazac alloy, Micro Models, Matai issue, International Delivery Van, GB8, with back doors, minor marks, Very Good 9/10 plus (2)



**285. MICRO MODEL MATAI ISSUE VANGUARD & FORD MAINLINE**  
105mm long, blue cast Mazac alloy, Micro Models, Matai issue Vanguard Estate Car, GB-15 paintwork is very poor but original, that's how these were made, Very Good 8/10 plus  
98mm long, black cast, Micro Models, Matai issue, Ford Mainline, G-35 paintwork is very poor but original, that's how these were made, some corrosion to base, Very Good 8/10 (2)



**282. MICRO MODEL MATAI ISSUE CHRYSLER, MG A**  
100mm long, brown/blue cast Mazac alloy, Micro Models, Matai issue Chrysler G/40 Excellent 9.5/10 plus  
100mm long, green cast Mazac alloy, Micro Models, Matai issue, MG A G/32 Excellent 9.5/10 (2)



**286. TONKA TINY TOYS**  
Left to right,  
125mm long, red/yellow pressed tin, Tonka Dump, model 535, Tonka New Zealand stickers to sides, minor marks, some distortion to one side, Very Good 8/10 plus  
112mm long, red/white pressed tin/plastic, Tonka Pick Up, model 515, Tonka New Zealand stickers to sides, minor marks, Very Good 8.5/10 plus  
105mm long, yellow/black pressed tin/plastic, Tonka Dozer, model 495, Tonka New Zealand stickers to top, minor paint loss/marks, Very Good 8/10 (3)

### 287. TONKA TINY TOYS

128mm long, boxed red/white pressed steel, Tonka Wrecker, model 555, Canadian made example, minor surface rust/paint loss/marks, Good 7.5/10 plus

125mm long, red/yellow pressed steel, Tonka Dump, model 535, Tonka New Zealand stickers to sides, minor marks/wear, Very Good 8/10 plus  
135mm long blue/white pressed steel, Tonka Rubbish Service Truck, model 615, Tonka New Zealand stickers to sides, minor marks/wear, Very Good 8/10 plus  
125mm long blue/white pressed steel, Tonka Steak Truck, model 527, illegible stickers to sides, surface rust/paint loss/wear, Good 6/10 (4)



### 291. LINCOLN TOYS MAJOR MODELS, FLAT ARTICULATED TRUCK

265mm long, red/yellow cast Mazac alloy, Lincoln Toys Major Toys Flat Articulated Truck repainted, no tail gate, minor marks, Good 7.5/10 plus  
150mm long, red/black cast Mazac alloy, Lincoln Toys Major Toys Cab damage to windscreen, repainted, 6/10 (2)



### 288. TONKA TINY TOYS

125mm long, red/yellow pressed tin, Tonka Dump, model 535, Tonka New Zealand stickers to sides, rear wheel rims have a melted appearance, minor marks, Good 7.5/10 plus

150mm long, red/white pressed tin/plastic, Tonka Pumper model 595, Tonka New Zealand stickers to sides, still has both ladders, wheel rims have a melted appearance, minor marks, Very Good 8/10 plus

130mm long, green/black pressed tin/plastic, Tonka Front End Loader, model 521 minor surface rust/paint loss/marks, Good 7/10 (3)



### 292. HALLMARK NEW ZEALAND MADE FIRE ENGINES

140mm long, boxed toys, red/black/brass all metal diecast, 1903 Shand-Mason ladder, with two horses pulling appliance, box has minor marks, Very Good 9/10 plus  
1903 Shand-Mason Horse Drawn Steamer, box is damaged, sellotape marks, out of shape, Very Good 8/10, limited edition Collectors Model, both approx 1/66 scale, Made In New Zealand by Hallmark Collections, both based on models of Auckland Fire Vehicles (2)



### 289. TONKA TOY FIRE ENGINE, CAR CARRIER

270mm long, red/white pressed steel/plastic ladders, articulated Tonka Fire Engine Aerial Ladder, model 675, plus 2 plastic ladders, (not original) Tonka New Zealand stickers to sides minor paint loss/marks Very Good 8/10 plus

235mm long, yellow pressed steel, articulated Tonka Car Carrier, model 635, Tonka New Zealand stickers to sides, paint loss/marks, a few scratches, Good 7.5/10 (2)



### 290. CALTEX SERVICE STATION

240mm wide x 165mm deep x 120mm tall wood/chipboard service station, marked Caltex Marfak Lubrication, a sticker to the front forecourt, Handcrafted By Apex Industries Box 36-027, Auck 9 NZ, wear to front edge, minor paint loss/wear Good 7/10



### 293. MICRO MODEL FERGUSON TRACTOR

105mm long, grey diecast, Micro Model Ferguson Tractor, 4337/G26, Micro models on rear wheels repairs to front axle, wear to steering wheel, minor marks, Good 8/10



### 294. RAILMASTER KITSET INTERNATIONAL TRUCK

140mm long original packaging, unpainted white metal, Railmaster International Truck, kitset unpainted, unassembled, Model R232, (based on Micro Style Cab) Very Good 9/10





**295. RAILMASTER KITSET FORD STAKE TRUCK**  
140mm long original packaging, unpainted white metal, Railmaster Kitset Ford Stake Truck, unpainted, unassembled, Model R281, (based on Dinky 422 Fordson truck) Very Good 9/10



**296. YEEHA NZ MADE RACING CARS**  
177mm long, red sand cast aluminium Yeeha racing cars, made in Napier by Barry Hughes, c1994, paint loss/wear to one, Good 7/10, plus minor marks to the other, Very Good 9/10 (2)



**297. TOLTOYS SKYSCRAPER SET & BUILDING SET**  
270mm x 355mm boxed plastic, Girder & Panel Action Building Set, Skyscraper with Working Elevator, Made in New Zealand By Toltoys Auckland Under Licence From Kenner Products, USA with instruction sheet, unknown if it is totally complete, tape & storage wear to box, Very Good 7.5/10 plus 200mm x 290mm Girder & Panel Action Building Set, Made in New Zealand By Toltoys Auckland Under Licence From Kenner Products, USA unknown if it is totally complete, tape & storage wear to box, Very Good 7.5/10 (2)



**298. FUN HO MIDGET ARTICULATED MILK TANKER 40, BOXED**  
97mm long box, 95mm long car, white diecast, Fun Ho Midget Articulated Milk Tanker, No. 40 in original box, N.Z. Pure Milk Supply stickers to sides, early version, Mobil Oil advertising on box Excellent, 9.5/10



**299. FUN HO MG SPORTS CAR 210**  
100mm long, red diecast Fun Ho model 210, MG Sports Car paint loss/wear, Good 7/10



**300. FUN HO RACING SMALL ULTRA SALOON 169**  
100mm long, green Fun Ho model 169, Small Ultra Saloon repainted green over blue, paint loss/wear, Good 7/10



**301. PLASTIC RACING CARS & TRUCKS**  
2 x 235mm long red & blue with black wheels plastic, Clockwork Racing Car, marked to underside, MFD by Rite spot plastic Product Glendale Calif, Made In U.S.A., red example mechanism is working, crack to side of seat, repairs to front axle area, Good 5.5/10 plus blue example, mechanism not working, crack to front right hand axle & left hand side of bonnet area, Good 5.5/10 plus 2 x 165mm long orange & blue plastic Trucks, no makers marks, possibly New Zealand made, broken strut to blue example, orange Very Good 8/10 plus blue, Good 6.5/10 (4)



**302. CROWN AND ANCHOR GAMBLING GAME**  
300mm x 70mm boxed game Crown & Anchor Crown And Anchor vintage gambling game, consists of 3 dice & playing mat, instructions to inside of box and marked Mere For Merriment, possibly a New Zealand company? play wear, some damage to box, Very Good 7.5/10



**303. ABINGDONS NEW ZEALAND TORPEDO WAR GAME BOXED**  
 255mm long x 88mm boxed game  
 wooden toy, Torpedo  
 The Fascinating War Game For Young & Old,  
 An Abingdon Product,  
 comprises 7 wooden pieces, unknown if it is complete, Abingdon was a Wellington based company that later became Hercules, c1940's exceptionally rare to find examples from this company, minor marks & wear to box, Very Good 8/10



**344. FUN HO MIGHTY MOVER LANDLINER BUS 56**  
 90mm long bus, white, 125mm long original packaging,  
 diecast Fun Ho Mighty Mover Landliner Bus, No.56, In'gill 13th AGM 1982 (for the NZ Model Vehicle Club) to one side of bus, H & H Travel to the other, tape mark to rear, (pack has been opened) minor marks, Very Good 8.5/10



**341. TINK-E TOYS RESTORERS VEHICLES**  
 Tink-E Toys vehicles, restorers project, all lead,  
 140mm long, green Car, Tink-E Toys 22/4941 to underside, only one rusty wheel remaining, plus  
 140mm long, red Truck, Tink-E Toys 21/5941 to underside, 3 rusty wheel remaining, plus  
 147mm long Pick up Truck, possibly not Tink-E? as no name to underside, only one rusty wheel remaining, plus  
 140mm long, green, Armoured Tank, Tink-E Toys 51/8742 to underside  
 Tink-e were an Auckland Company,  
 all vehicles have extensive paint loss/wear, surface rust, Good, 6/10 (4)



**345. FUN HO CHROME MIDGETS**  
 75mm long chrome  
 diecast Fun Ho Midget Austin Articulated Truck, No. 18  
 Very Good 9/10 plus  
 52mm long chrome  
 diecast Fun Ho Midget Tanker,  
 Very Good 9/10 (2)



**342. FUN HO MIDGETS**  
 Left to right,  
 95mm long red  
 diecast Fun Ho Bedford Articulated Petrol Tanker, No. 27, Caltex decals to tanker, wear/paint loss, Good 7/10 plus  
 92mm long green  
 diecast Fun Ho Landliner Bus no. 56  
 minor wear/paint loss, Good 8.5/10 plus  
 45mm blue  
 diecast Fun Ho Fordson Major Tractor, No. 16  
 minor wear/paint loss, Good 8.5/10 (3)



**346. FUN HO ROADSTER CAR 112**  
 104mm long red  
 Fun Ho model 112 Small Roadster Car,  
 major wear/paint loss, Good 7/10



**343. FUN HO MIDGET BREAKDOWN TRUCK 53, BOXED**  
 97mm long box, 65mm long car, bronze/zinc plated diecast, Fun Ho Midget Breakdown truck, No. 53 in original box, later version, no Dunlop sticker, with catalogue leaflet  
 Excellent, 9.5/10



**347. FUN HO FARM TRUCK 156**  
 104mm long, blue  
 Fun Ho model 156, Small Farm Truck,  
 some paint loss/wear, Good 7/10





### 348. FUN HO MIDGETS

Left to right,  
95mm long green  
diecast Fun Ho Tractor Scraper no. 55,  
minor wear/paint loss, Good 7/10 plus  
92mm long green/orange  
diecast Fun Ho Bedford Articulated Truck no. 22, Dunlop decals to  
both sides of trailer  
wear/paint loss, Good 7.5/10 plus  
45mm green/orange  
diecast Fun Ho Bedford Truck, no.29, later version  
minor wear/paint loss, Good 8.5/10 (3)



### 349. FUN HO CHROME MIDGETS

52mm long chrome  
diecast Fun Ho Midget BOAC Bus No. 7, no marking on base  
Very Good 9/10 plus  
52mm long chrome  
diecast Fun Ho Midget Tanker, No. 4, partial sticker remains  
Very Good 9/10 (2)



### 350. FUN HO KING MIGHTY MOVERS FORESTRY KIT BOXED

195mm x 135mm  
box, yellow models  
diecast Fun Ho  
Mighty Movers  
Forestry Kit,  
contains 6 different  
models, as new  
small tear/hole to  
cellophane, very  
minor marks, Very  
Good 9.5/10



### 350A. TINK-E TOYS RACING CAR

204mm long, chestnut colour,  
Zinc Aluminium, Tink-E Toys Racing Car, no wheels, later 1950's  
production, Tink-E Toys were an Auckland Company  
some paint loss/wear 6.5/10



### 350B. TINK-E TOYS RACING CAR

147mm long, green,  
Zinc Aluminium, Tink-E  
Toys Racing Car, no  
wheels, later 1950's  
production, Tink-E  
Toys were an Auckland  
Company  
some paint loss/wear  
6.5/10



### 350C. TINK-E TOYS CAR

139mm long, blue,  
Zinc Aluminium, Tink-E Toys Car, no wheels, later 1950's production,  
Tink-E Toys 22/4941 to underside, they were an Auckland Company  
some paint loss/wear 7/10



### 350D. TINK-E TOYS BREAKDOWN TRUCK

145mm long blue/black  
Zinc Aluminium, Tink-E Toys Breakdown truck, no wheels, later  
1950's production, Tink-E Toys 21/5941 to underside, they were an  
Auckland Company  
paint loss/wear 7/10



### 350E. TINK-E TOYS SHELL TANKER

144mm long, yellow/red  
Zinc Aluminium, Tink-E Toys Shell Tanker, no wheels, later 1950's  
production, marked Tink-E Toys 23/30741 to underside, (an Auckland  
Company)  
paint loss/wear 7/10



**350F. TINK-E TOYS  
AMBULANCE**  
92mm long, cream  
lead, Tink-E Toys  
Ambulance, with tin  
wheels, Ambulance &  
cross painted on body &  
roof, marked Tink-E Toy  
with illegible numbers to  
underside (an Auckland  
Company, c1940's)  
paint loss/wear 8/10



**350K. TINK-E TOYS SMALL FIGHTER AIRPLANE**  
62mm long, 78mm wingspan, green/blue  
lead, Tink-E Toys Small Fighter Airplane, with propellor, marked  
Tink-E Toy 22541 USA to underside, (an Auckland Company,  
c1940's)  
repainted, minor paint loss/wear 7/10



**350G. TINK-E  
TOYS TRACTOR**  
80mm long, chestnut  
lead, Tink-E Toys Tractor  
with tin wheels painted  
blue, marked Tink-E Toy  
with illegible numbers  
to side of engine (an  
Auckland Company,  
c1940's)  
minor paint loss/wear  
8/10



**350L. TINK-E  
TOYS FIRE  
ENGINE**  
82mm long red  
lead, Tink-E Toys  
Fire Engine with  
tin wheels, marked  
Tink-E Toy  
paint loss/wear 7/10



**350H. TINK-E TOYS RACING CAR**  
135mm long red  
lead, Tink-E Toys Racing Car with wooden wheels, marked Tink-E  
Toy (an Auckland Company, c1940's)  
minor paint loss/wear 8/10



**350M. TINK-E  
TOYS TWIN  
ENGINE PLANE**  
98mm long, 140mm  
wingspan, red  
lead, Tink-E Toys  
Twin Engine Airplane,  
original propellers,  
marked Tink-E  
Toy 44/161242  
to underside, (an  
Auckland Company,  
c1940's)  
minor paint loss/wear  
8/10



**350I. TINK-E TOYS SHELL TANKER**  
144mm long, yellow/red  
lead, Tink-E Toys Shell Tanker, no wheels, marked Tink-E Toys  
23/3074 to underside, (an Auckland Company, c1940's)  
has been repainted, minor paint loss/wear 6/10



**350N. TINK-E  
TOYS LARGE  
PICK UP TRUCK**  
135mm long blue  
lead, Tink-E Toys  
Large Pick Up Truck  
with tin wheels to  
front, plastic wheels  
to rear, marked Tink-E  
Toy with illegible  
numbers to underside  
(an Auckland  
Company, c1940's)  
paint loss/wear 7/10



**350J. TINK-E TOYS BREAKDOWN TRUCK**  
140mm long green  
lead, Tink-E Toys Breakdown Truck, with tin wheels, marked 21/5941  
paint loss/wear 8/10



**350O. TINK-E  
TOYS SPITFIRE  
FIGHTER PLANE**  
83mm long, 100mm  
wingspan, green  
lead, Tink-E Toys  
Spitfire plane, missing  
wheels & propellor,  
Spitfire Fighter Tink-E  
Toys (an Auckland  
Company, c1940's)  
minor paint loss/wear  
7/10





### 350P. TINK-E TOYS RACING CAR

94mm long, silver  
lead, Tink-E Toys Racing Car with Fun Ho wheels, repainted, marked Tink-E Toys (an Auckland Company, c1940's)  
loose axle, minor wear, Good 5/10



### 354. TRI-ANG TOYS THAMES TRADER FARM TRUCK

420mm long, red/green  
diecast cab, pressed steel body, Tri-ang Thames Trader Farm Truck  
surface rust, extensive paint loss/wear, minor dints, Good 6/10



### 351. HIGHWAY GARAGE

475mm wide x 375mm deep x 210mm tall, multi coloured  
wooden service station, marked Highway Garage, with Caltex petrol pumps  
minor play wear, Very Good 8/10



### 355. TRI-ANG No 1 CRANE

180mm long wheel to wheel, x 270mm tall, yellow  
pressed steel, Tri-ang No. 1, Crane, model 40771, with hook, Tri-ang Made In New Zealand sticker to cab roof, with replacement hook, flex between body and base  
surface rust, paint loss/wear, Good 6/10



### 352. LUMAR HIGH LIFT LOADER

385mm long, lime green  
pressed steel, Lumar, High Lift Loader, made by Marx, (United States), c1950's-1960's, missing exhaust & engine block  
paint loss/wear Good 7/10



### 356. TRI-ANG EARTH MOVING HI LOADER

370mm long, yellow  
pressed steel, rubber tyres, Tri-Ang Earth Moving Series Hi Loader, model 40790, bucket mechanism working, Tri-ang sticker, engine exhaust is loose, replacement engine  
all over rust, paint loss, wear, Good 6/10



### 353. TRI-ANG ROCKER DUMP

440mm long, yellow  
pressed steel, Tri-Ang Earth Moving Series Rocker Dump, model 40798, Tri-ang New Zealand stickers, mechanism working, exhaust missing, surface rust, paint loss, wear, Good 7/10



### 357. MOTOR MOWER

250mm long body, 820mm long (approx)  
with handle, red/black pressed steel body/plastic motor, Briggs & Stratton Max 4HP sticker to body, marketed in New Zealand by Lincoln International  
surface rust, wear/paint loss, Good 7.5/10



### 358. WOODEN FURNITURE REMOVALS VAN

525mm long, yellow/red/blue

wooden toy furniture removals van, Furniture Removals By Experts & General Carriers printed to both sides, c1950's featured in Farmers Christmas Toy Catalogue for several years, damage to front, windscreen detail missing, damage to grill, 3 mudguards replaced, paint loss, Good 6/10



### 361. GAMA MECHANICAL SHOVEL

160mm long body, x 300mm tall, orange/blue/cream tin/plastic, German made toy, Gama mechanical shovel, marked Gama to both cab doors, marketed by Lincoln Toys New Zealand, c1954, mechanism partially working minor surface rust, minor paint loss, minor marks, Very Good 8/10



### 359. TRI-ANG DIESEL SERIES FIRE ENGINE

410mm long, red/yellow in original box

pressed steel Tri-ang Diesel Series Fire Engine, model 40721, with plastic fireman, ladder needs restringing, bell works, storage damage to box, corrosion to front grill, surface rust, paint loss/wear Very Good 8/10



### 362. ASSORTED TIN TOYS

Pressed tin toys

112mm long,

Arnold plane, Made In Western Germany marked to underside, and marketed by Lincoln Toys, clockwork mechanism not tested minor surface rust/paint loss, minor marks, Very Good 8/10 plus 85mm long tank,

Arnold tank, Made In Western Germany, marked to underside, and marketed by Lincoln Toys, clockwork mechanism not tested

minor surface rust/paint loss, minor marks, Very Good 8/10 plus 205mm long, boat, Lincoln Toys to front deck, possible propellor is missing,

surface rust/paint loss, minor marks, Good 6/10 (3)



### 360. TRI-ANG HORSE CARRIER 40747

460mm long, green/brown

pressed steel, Triang Regal Series Horse Carrier, 40747, surface rust, crack to Perspex windscreen, paint loss/wear, Good 7/10



### 363. AIRPORT LUGGAGE TRACTOR & CARTS

550mm long, blue

tin plate, 3 piece Airport Luggage Tractor & 2 Carts, Airport Luggage marked on sides of all 3 pieces, Made In Japan on the 2 carts & Japan stamp to base of tractor, marketed by Lincoln Toys, illustrated in a 1963/64 Lincoln Toy catalogue

hitching between tractor & first cab is broken,

very minor surface rust, minor marks, Very Good 8/10





### 364. MICRO MODELS, RESTORERS LOT

left to right, Micro Models, for a restoration project,  
Holden FX Police Car, 4309/GB9,  
Humber Super Snipe 4309/GB10,  
Holden FX Sedan, 4311/GB9,  
Ford Customline Sedan 4338/G34,  
Standard Vanguard Estate, 4319/GB15,  
Holden FJ Panel Van, 4320/GB21,  
Ford Mainline Ute 4343/G35  
M.G.A. Sports Car 4334/G32,  
in various states of restoration, some have been repainted, some with  
marks, as is, Good 6/10 (8)



### 367. PLASTIC TOY SPORTS CARS

all plastic,  
340mm long red/blue  
racing car, Made In New Zealand with Kiwi Symbol mark to  
underside,  
minor marks, Very Good 7.5/10 plus  
260mm long, red with yellow underside  
Mercedes sports car, Made In Australia to underside but with sticker  
over the top, Made In New Zealand Under licence By Consolidated  
Plastics Ltd Auckland,  
play worn, discolouring to top, Good 6/10 plus  
174mm long yellow/blue steering wheel  
sports car, Healy to underside,  
play worn, Good 6/10 (3)



### 365. UNIDENTIFIED LEAD TOY VEHICLES

longest, 95mm, assorted colours  
cast & slush moulded lead toys, possibly New Zealand origin, but  
manufacturer unknown, 3 with tin wheels,  
one has been repainted, paint loss wear to all others, 6.5/10 (7)



### 367A. PLASTIC TOY TRUCKS, VOLKSWAGENS

left to right, all plastic toys  
2x 165mm long green/yellow with orange wheels Tip Truck plus  
orange/green with yellow wheels, Tip truck, no markings on either,  
both Very Good 9/10 plus  
2 x 120mm long yellow Volkswagen Beetle cars, green wheeled  
example Very Good 9/10  
blue wheeled example has split in roof 5/10 (4)



### 366. ZEALITE NEW ZEALAND MADE TOY TRUCKS

3 plastic toys marked Zealite Made In New Zealand to underside,  
made by a Wellington Company Optoplast, c1950's?  
left to right, all approx 160mm long,  
yellow/red Petrol Tanker, plus  
yellow/red Breakdown Truck with crane & hook plus  
yellow/grey hard plastic Breakdown truck, missing crane & hook  
minor marks, age related wear, Good 7/10 (3)



### 368. DUCKY TOYS AMERICAN CAR

117mm long, Orange  
cast lead, American car, marked to underside, NZ Ducky Toys C9,  
made in Palmerston North, extremely rare,  
missing back wheels & axle, paint loss, minor wear, Good 7/10



### 369. DUCKY TOYS VAN

82mm long, dark navy blue  
cast lead, van, marked to underside, NZ Ducky Toys G5, made in Palmerston North, extremely rare, brass wheel hubs, missing one tyre, hole drill in centre of roof, minor paint loss, minor wear, Good 6.5/10



### 373. DUCKY TOYS VAN

82mm long, yellow/brown  
cast lead, van, marked to underside, NZ Ducky Toys 65, made in Palmerston North, extremely rare, brass wheel hubs, this example has been restored to a high standard, very minor paint loss, minor wear, Very Good 8/10



### 370. DUCKY TOYS AMERICAN CAR

117mm long, blue  
cast lead, American car, marked to underside, NZ Ducky Toys C9, made in Palmerston North, extremely rare, one wheel missing tyre, one tyre, misshaped, paint loss, minor wear, Good 7/10



### 374. DUCKY TOYS RACING CAR

103mm long, blue  
cast lead Auto Union style racing car, not marked but attributed to NZ Ducky Toys, made in Palmerston North, extremely rare, brass wheel hubs, minor paint loss, minor wear, Good 8.5/10



### 371. DUCKY TOYS RACING CAR

95mm long, blue  
cast lead racing car, not marked but attributed to NZ Ducky Toys, made in Palmerston North, extremely rare, brass wheel hubs, paint loss, minor wear, Good 7.5/10



### 372. DUCKY TOYS RACING CARS

95mm long, red  
cast lead racing car, not marked but attributed to NZ Ducky Toys, made in Palmerston North, extremely rare, brass wheel hubs, paint loss, minor wear, Good 7.5/10 plus  
95mm long, orange  
cast lead racing car, not marked but attributed to NZ Ducky Toys, made in Palmerston North, extremely rare, no wheels, paint loss, minor wear, Fair 5/10 (2)



### 375. LINCOLN GIANT FARM TRACTOR, RACING CAR

360mm long orange/black  
blow moulded plastic, Lincoln Farm Tractor, model 6858, minor wear, Very Good 8/10 plus  
350mm long orange/black  
blow moulded plastic, Racing Car, Possibly Lincoln, damage to drivers head, minor marks, wear, Good 6.5/10 (2)



## This image shows a blank sheet of white paper with horizontal ruling lines. The lines are evenly spaced and run across the width of the page. There are no margins, text, or other markings on the paper.

