

# KIWI AUCTIONS

Presents an Absentee / Timed Auction of

# Automobilia

Auction Starts Nov 25th & Closes Dec 9th 2023



KIWI AUCTIONS LTD

106B Harpers Road, RD 2, Kaiapoi 7692, New Zealand

Telephone (NZ only) 0800 782 584

Telephone: (intl) +64 27 270 7410

Web [www.kiwiauctions.co.nz](http://www.kiwiauctions.co.nz)

Email: [info@kiwiauctions.co.nz](mailto:info@kiwiauctions.co.nz)

## **General**

### **1. Definition**

In these terms of business:

Kiwi Auctions Limited is referred to as 'KA'.

The KA representative conducting the auction is referred to as the 'auctioneer'.

### **2. Attribution and Condition of Lots**

We make every effort to ensure the accuracy of any statement as to authorship, attribution, origin, date, age, provenance, and condition of any lot, whether or not. Any statement made orally or in the catalogue is an opinion given after careful consideration and research.

Written condition reports are available upon request for buyers unable to attend viewing in person.

When bidding, you acknowledge that you are fully satisfied as to the attribution and condition of the lot.

### **3. Third Party Liability**

Every person on KA premises before, during or after a sale shall be deemed to be there at their own risk and shall have no claim against KA in respect of any injury they may sustain or any accident which may occur.

### **4. Disputes**

Any dispute not covered in these terms of business will be settled at the sole discretion of KA.

### **5. The Seller**

a. KA sell as agents for the seller (Vendor).

b. KA reserve the right to fix a reserve price for any lot.

c. Payment we aim to pay you no later than 28 working days after the auction.

We do not pay interest on the period between your buyer's payment and your receipt of the payment.

We act as agents and cannot be held responsible if your buyer does not pay. We cannot pay you until we have received cleared funds.

### **6. The Buyer**

The highest bidder acknowledged as such by the auctioneer will be the buyer. If any dispute arises, the auctioneer has absolute discretion to settle the matter.

The auctioneer rules the bidding and bids cannot be retracted. The auctioneer reserves the right to refuse any bid.

The successful bidder, whether bidding for himself or for a third party, is entirely responsible for paying for the lots they have bought in accordance with KA terms of business.

The auctioneer reserves the right to bid on behalf of the vendors for any lot and to withdraw, consolidate or divide any lot or lots.

### **7. Registration**

Prospective buyers need to register with us, giving their full name, address, contact telephone number(s) and email address. First time buyers will be required to provide proof of identity (i.e., driving licence/passport), a valid debit or credit card. Upon receipt of the above a buyer number will be issued, which is only valid for the current sale. This card may be used to indicate your bids to the Auctioneer during the sale. If successful, the bidder must ensure that their number can be seen by the Auctioneer and that it is their number that is called out. Should there be any doubts as to price or buyer, please draw the Auctioneer's attention to it immediately.

### **8. Buyer's Premium**

You will pay a premium of 15% plus GST on the hammer price of your purchase on each lot.

GST is calculated at the rates that apply on the day of the auction.

### **9. Payment**

Buyers must pay in full before their purchases can be released to them.

Payment Methods

We accept payment by:

- Cash
- Debit card
- PayPal Please note a charge of 5% needs to be added to PayPal payments.
- Credit card Visa & Mastercard only, not American Express or Diners Club.
- Bank transfer to:

**Kiwi Auctions Ltd**

Account no.           03 0823 0044485 00

Account name       Kiwi Auctions Ltd

### **10. Internet Bidding**

Live online bidding at selected auctions is now available, please see website for details

### **11. Ownership of Purchases**

Ownership of lot(s) purchased will not pass to the buyer until they have paid KA in full, and KA has applied the payment to the lot.

### **12. Transfer of Risk**

Each lot is the buyer's sole responsibility from the fall of the hammer and is sold with all faults and imperfections.

KA is not responsible for the correct description, genuineness or authenticity of any lot and makes no warranty whatsoever.

The buyer is deemed to have inspected each lot and satisfied himself as to its condition.

Written condition reports are available upon request for buyers unable to attend viewing in person. We are unable to offer comprehensive condition reports on low value lots comprising multiple items. Refunds cannot be given with regards to condition on items purchased by buyers who have viewed their purchased lots. Refunds will only be considered if a written condition report has been issued and the description of condition is not as described.

### **13. Commission Absentee Bids**

If instructed, KA will execute bids and advise prospective buyers.

Buyers who cannot come to a sale may leave their bid with our staff after viewing or make their bid in advance by telephone or email. Such bids are placed at the buyer's own risk.

Bids must be made at least one hour before the sale starts, and we advise buyers to make bids within one hour of the close of the view day.

When making bids, buyers must provide:

- Their full name
- Address
- Email address
- Contact telephone numbers
- The number of the lot they wish to buy
- Their maximum bid amount – excluding commission which will be added to the invoice afterwards.

We will ensure that lots are bought as cheaply as possible depending on the bids made and other reserves. If identical bids are placed, the person who bid first will take precedence.

### **14. Telephone Bids**

Requests for telephone bidding must be registered one hour prior to the close of the view day. Lines are booked on a first come first served basis.

Full name, address and telephone numbers will be required together with proof of identity and address. Bank and credit/debit card details are also necessary.

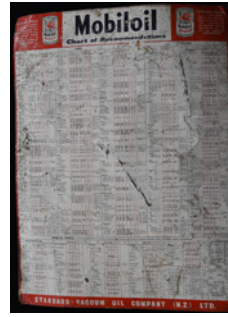
### **15. Absentee Bidding**

Whilst every effort is made to execute absentee bidding, KA cannot be held responsible for any default or neglect in connection with this service.

All such arrangements are made entirely at the prospective buyer's risk.



**1. MOTORING OIL POURERS**  
Left to right, 260mm tall motoring oil pourer, with Shell logo sticker to front, 1 L weights and measures stamp, all over surface rust, Good 6/10 plus 220mm tall white painted Oil Purer, 500ml, paint loss, surface rust, small scuffs and scratches, dints to pourer, Good 6/10 plus 275mm tall, blue painted, one Quart with weights and measures stamp, major paint loss, surface rust, Good 6/10 (3)



**6. MOBIL CHART OF RECOMMENDATIONS TIN SIGN**  
860mm x 647mm Tin Sign, Mobiloil Chart of Recommendations, Standard Vacuum Oil Company (NZ) Ltd, image of a tin of Mobiloil Special to top corners, body mentions various vehicles and suggested suitable oils, faded, wear, light surface rust, Good 6.5/10



**2. CAR NAME BADGES ZEPHYR**  
Car badges for Zephyr, longest 300mm, light pitting, minor marks, minor light surface rust, Very Good 7.5/10 (9)



**7. ACE TYRES ALUMINUM SIGN**  
1220mm x 610mm Blue, Red, White aluminium sign, Ace Tyres, Made in NZ to BF Goodrich Specifications, light under paint surface rust, minor marks, light scratches, Very Good 7/10



**3. CHAMPION WALL CLOCK**  
250mm x 435mm Plastic Wall Clock, Champion beneath the hands, untested, minor marks, Very good 8/10



**7A. PLUME APPOTENIC MOTOR SPIRIT ENAMEL SIGN**  
255mm wide x 100mm tall, original Enamel Sign, Please Shut Gate Use Plume Appotenic Motor Spirit, Simpson Adelaide maker. A very rare early Original enamel sign in fantastic condition, just very minor chipping around fixing holes, Very Good 9/10



**8. MOTORING OIL BOTTLE POURERS**  
Motoring Oil Bottle Pourers, Tallest 158mm tall, tin, Shell X-100 Motor Oil, surface rust, paint loss, scratches and wear, Good 6/10 plus tin, Castrol Super Castrolite, with Liquid Tungsten, 10W-40, light scratches and wear, Very Good 8/10 plus plastic, Caltex SAE 40, Very Good 8.5/10 plus plastic with cap, in Green, probably BP, 30 sticker to centre, minor marks Very Good 8/10 plus plastic Duckhams Motor Oil, minor marks Very Good 8/10 (5)



**4. SHELL DONAX OIL TIN**  
145mm tall oil tin, Shell Donax T6 to both sides, Lubrificants Specialises to both ends, screw cap not original, light surface rust, small scuffs and paint loss, Very Good 7/10



**9. BP ENERGOL MOTOR OIL TIN**  
235mm tall oil tin BP Energol Motor Oil to both sides, BP Energol 2L Motor Oil to both ends, SAE 40 screw cap not original, light surface rust, small scuffs and paint loss, Very Good 7/10



**5. FORD WALL AND ALARM CLOCKS**  
280mm diameter, Ford, Official Licensed Product, round modern wall clock with thermometer and barometer, untested, Very Good 9/10 plus 165mm tall, Ford alarm clock, wind-up, light under chrome surface rust, in working order, Very Good 8/10 (2)



**10. HELLA WALL CLOCK**  
440mm x 238mm Plastic Wall Clock, marked Hella with image of some products, some wear around hands, in working order, Very Good 8/10



**11. CHROME CAR NAME BADGES**

Chrome car name badges, longest 210mm, 3 x Deluxe, 4 x Classic, 1 x Overdrive, 1 x Country, light pitting, minor marks, minor light surface rust, Very Good 7.5/10 (9)



**16. DUCKHAMS GREASE 1 LB TIN**

108mm tall x 85mm diameter, Duckham's Grease tin, Alexander Duckham & Co Ltd, London, Motoring products 1LB Net, Some contents, unsure which one it is, Duckham's embossed into lid, light under paint surface rust, minor marks, Very Good 8.5/10



**12. CHAMPION SPARK PLUGS ALUMINIUM SIGN**

1218mm x 607mm aluminium sign in Red, Black, White, Champion Dependable Spark Plugs, Better By Far For Every Car, with image of a Spark Plug, Firth Signs Wellington makers name in lower right hand corner, staining to right hand side, minor marks, bend to lower left hand corner, over paint to top edge, Good 7/10



**17. FIRESTONE TIN SIGN**

760mm x 200mm tin sign in Red on White, vinyl peel and stick label, folded over edges has provision to be used on a stand, paint loss to top and bottom edges, light scratches, light wear, Good 6/10



**13. REIDRUBBER TIN SIGN**

1200mm x 760mm tin sign in Blue, Red, Black on White background, Reidrubber All You Need To Know About Tyres, image of a family in a car, buckling to lower left hand corner, some wear and paint loss to upper edge and around nail holes, scratches, minor marks, Good 7/10



**18. SHELL BLUE PENNANT Kerosine PAINTED TIN SIGN**

330mm x 495mm painted tin sign, Blue and Yellow on White, Shell Blue Pennant Kerosine, light scratches, minor marks, Very Good 8.5/10



**14. MOBIL OIL AND CALTEX OIL BOTTLES**

Mobil Oil, One Imperial Quart, tall glass oil bottle, no gargoyles, The Vacuum Oil Co Pty Ltd, AGM F4 to base, minor marks, Very Good 9/10 plus Caltex Reg TM One Imperial Pint, glass oil bottle, Caltex Oil (NZ) Ltd, metal band on neck SAE-30 (faded and hard to read), A8 on base, Excellent 9.5/10 (2)



**19. ASSORTED TINS**

Left to right, 82mm tall, Ace Rubber Cement, light surface rust, scratches and light wear, Good 7/10, plus 97mm tall, Dunlop French Chalk, light surface rust, scratches and minor marks, Very Good 8.5/10 plus 112mm tall Dunlop Major Patch Strip Outfit, dull, light surface rust, scratches and wear, Fair 5/10 plus 77mm tall, Dunlop Cycle Valve Tubing, (12 Yards), light surface rust, scratches and minor marks, Very Good 8.5/10, plus Dunlop Minor Patch Strip Outfit, dull, surface rust, scratches and wear, Fair 5/10 plus 97mm tall, Dunlop Rubber Solution, light surface rust, scratches and minor marks, dints to right hand side, Good 6/10 plus 110mm tall, Hinsdale Rubber Tube Repair Kit, Made In New Zealand, light surface rust, scratches and minor marks, paint loss to right hand side, Good 6/10, plus 75mm x 47mm OXO Cubes light surface rust, scratches and wear, Good 7/10 (8)



**15. MOTORING POLISHER/MOPS**

Left to right, car polisher mops, tallest 385mm tall, Nnette Dust Absorbing Polisher plus Bon Impregnated Polisher plus Magi-Mop, Absorbs Dust Instantly, plus Bon Impregnated Polisher plus President Auto Dust Mop, all have minor under paint rust, light scratches, Very Good 7.5/10 (5)



**20. BOXED SAFA ELECTRIC CAR RUG**

385mm x 265mm x 75mm Safa-Trip The Electric Car Rug, Take One for the Road, with bagged original tartan rug, box has some dirty marks including pen and sellotape marks, the rug looks as new, Very good 8/10



### 21. WAKEFIELD CASTROL QUART OIL BOTTLE

Oil Bottle, Wakefield Castrol Motor Oil, One Imperial Quart, clear glass, Wakefield Castrol Motor Oil, The Property of C C Wakefield & Co Ltd to the rear, with metal pourer and cap, XXL Special Heavy Castrol British Owned, it has chain so cap doesn't get lost, bottle is excellent, cap has light surface rust, faded, minor paint loss, Very Good 8.5/10



### 26. SILVER EXIDE BATTERY PAINTED TIN SIGN

610mm x 458mm tin sign, White and Black on Red background, The New Silver Exide Battery, For Complete Reliability and Long Life, Firth Signs Wellington to lower right hand corner, minor under paint surface rust and paint loss, minor marks, some overpaint to both sides, on reverse side, hand painted Tyre Bay on White background, Very Good 8/10



### 22. CHROME CAR NAME BADGES

Chrome car badges, longest 200mm long, 2 x Kingswood, 2 x Belmont, 1 x Torana, 1 x Holden Sunbird, 4 x GT, light pitting, minor marks, minor light surface rust, Very Good 7.5/10 (10)



### 27. AB BATTERIES PLASTIC SIGN

375mm x 410mm raised Plastic sign, in Red, Black and Yellow on a White background, Put AB under your Bonnet with image of a VEGA Battery and Bumblebee, Amalgamated Batteries Ltd, minor marks, Very Good 9/10



### 23. SHELL BLUE PENNANT KEROSENE PAINTED TIN SIGN

330mm x 495mm painted tin sign, Blue and Yellow on White, Shell Blue Pennant Kerosine, light scratches, minor marks to top half of sign, Good 7/10

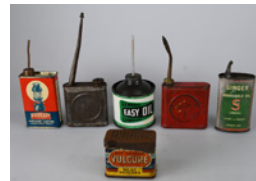


### 28. MOBIL AND SHELL OIL BOTTLES

Glass Oil bottles, Mobiloil, One Imperial Pint, no gargoyles, The Vacuum Oil Co Pty Ltd, AGM EO to base, Very Good 9/10 plus Shell Motor Oil One Pint bottle, The Shell Company Of New Zealand Limited, AGM 15 to base, Very Good 9/10 (2)

### 24. ASSORTED OIL AND MOTORING TINS

Left to right, 98mm tall, BP Energol Domestic Oil, faded, paint loss, scratches and wear, minor dinting, Fair 5/10 plus 170mm tall to top of spout, All-Purpose Oil, Raleigh Industries England, image of bicycle to rear, minor marks and scratches, Very Good 8/10 plus 115mm tall, The Liquid Tool EEZIT, Releases All Rust Bound Metal Parts, missing spout, under paint surface rust, light marks and scratches, light wear, Good 6.5/10 plus 190mm tall to top of spout, Holts Graphited Penetrating Oil, light marks and scratches, light wear, Good 7/10 plus 115mm tall, Lockheed Super Heavy Duty Hydraulic Fluid, small dints, under paint surface rust, light marks and scratches, light wear, Good 7/10 plus 125mm tall 3-In-One Multi Purpose Oil, 3 fl oz, minor marks and scratches, Made By Kolynos (NZ) Limited Auckland, Very Good 7.5/10 (6)



### 29. ASSORTED OIL AND MOTORING TINS

Left to right, tallest is 190mm tall, Eveready Pressure Lantern, Container for Alcohol, minor marks, Very Good 9/10 plus unbranded oil tin pourer, unpainted, surface rust, minor marks, Good 7/10 plus General Easy Oil Lubricant, Stewart Foot & Co Ltd Auckland, light scratches, minor marks, Very Good 8/10 plus unbranded oil tin pourer, painted red, minor paint loss, light surface rust, minor marks, Good 7/10 plus Singer Extra Quality Household Oil, damage to spout, all over dull, dints, minor marks, Fair, 5/10 plus in front, Vulcure Heat Patches tin, Vulcure Products Sydney NSW, perforated scraper to lid, damage to top portion of paper label, staining to rear label, light surface rust, Good 6/10 (6)

### 25. FORD MOTOR COMPANY OF NEW ZEALAND SERVICE BULLETINS

280mm x 295mm x 80mm thick folder, Service Bulletins -Mechanical- V8, V12, Ford Motor Company Of New Zealand Limited, a comprehensive repair service guide, the foreword is dated 15 September 1939, it covers all parts of a car including Brakes, Engine, Fuel System, Cooling Systems etc, some staining on the inside front cover, light surface rust on the ring binder, some minor marks on some pages, generally in remarkable order, Very Good 8/10



### 30. BAR'S LEAKS PLASTIC DISPLAY CASE

415mm x 690mm plastic display designed to mount on a wall, Bar's Leaks, Stop Leak and Cooling System Inhibitor Recommended for Alloy Motors Radiator and Cooling System Cleaner, some rim edge chips and cracks, Very Good 7.5/10



### 31. MICHELIN DOUBLE SIDED TIN SIGN

610mm x 535mm double sided with flange tin sign in Blue, Yellow, Black with White figure, Michelin with image of the Michelin Man, Made in France, wear and surface rust light scratches, some fading, Fair 5/10



### 36. TYRE REPAIR TINS

Tallest 168mm tall, Left to right, Dunlop Vulcafix Patch Strip tin, Made in England, minor paint loss, surface rust, small scuffs and scratches, the lid is dull, Very Good 7.5/10 plus Dunlop Cycle Value Tubing, minor marks, Very Good 8.5/10 plus Goodrich Quick Cure Tube Gum, paper label on tin, B F Goodrich Made in Akron, Ohio, USA, minor damage to label on top edge, minor marks and age related dirty, Very Good 7.5/10 (3)



### 32. DUNLOP BOARD SIGN

700mm x 635mm heavy cardboard sign, Red and Black on Yellow background, Dunlop Completes the Cycle, Trust Dunlop, missing top piece of the Dunlop Logo, minor marks, Very Good 6.5/10



### 37. FORD GENUINE PARTS TIN SIGN

600mm x 450mm Reproduction tin sign, White on Blue background, Ford Genuine Parts, Very Good 9/10



### 33. CHROME CAR NAME BADGES HOOD EMBLEMS

Chrome badges and hood ornaments, longest 130mm, 6 x V8, V6, V with the Holden Lion and a Chequered Flag, Austin Flying A, Ford Anglia, Jaguar hood emblem, light pitting, minor marks, minor light surface rust, Very Good 7.5/10 (11)



### 38. CASTROL / KAWASAKI TIN SIGN

675mm x 675mm tin sign, Red and Green on a White background, Castrol, light scratches, minor marks, the other side is Black, Red and grey on a White background, Briggs & Stratton and Kawasaki Engines, minor paint loss and marks, light scratches, Very Good 7.5/10



### 34. MOBIL OIL BOTTLES

Oil Bottles, both glass Mobiloil, One Imperial Pint, with the Gargoyle, The Vacuum Oil Co Pty Ltd, one has nice blob of glass to inside adding to the character, AGM D9 to the base of one and AGM B9 to the other, Excellent 9/10 (2)



### 39. MOTORING OIL CANS

Tallest 233mm tall, Left to right, Wakefield Castrol D Gear SAE 140 Motor Oil, 1 IMP Quart, Red print faded, minor marks, light surface rust, small scuffs and paint loss, Good 7/10 Castrol Motor Oil, 1 IMP Quart, scratches, scuffs and paint loss, Good 7/10 plus Gargoyle Red Spraying Oil, Certified by the Plant Research Bureau, Standard Vacuum Oil Co (NZ) Ltd, 1 Imperial Quart, scratches, scuffs and paint loss, Fair 5/10 plus Shell Automotive Oils, One Imperial Quart, surface rust, small scuffs, scratches and paint loss, Fair, 5/10 (4)



### 35. TUNE UP WITH REPCO IGNITION PARTS DISPLAY CABINET

425mm x 460mm metal display cabinet that can be mounted onto a wall, Tune Up With Repco Ignition Parts, 2 doors that open to show 24 compartments, and a vehicle application cart on the back of one door, surface rust, marks and light scratches, Very Good 7.5/10



### 40. NZR WATER BUCKET FOR FIRE

275mm tall (handle down) x 275mm diameter metal water bucket, painted Burgundy to the outside, NZR (for New Zealand Railways) in relief to body and printed FIRE to the opposite, some paint loss and scratches, Very Good 7.5/10



#### 41. EUROPA AND CASTROL OIL BOTTLES

Oil Bottles, Europa - Lube One Quart, Associated Motorists Petrol Co Ltd, with metal band and cap, both rusty and unable to read the cap, SAE 20 on the band, has the cork in the bottle, minor marks, Very Good 8.5/10 plus Pyro label, Castrol in red and embossed 500ml to shoulder, with metal pourer cap, Castrolite Supergrade, 10W-20-30 faded, paint loss, light surface rust, Very Good 8/10 (2)



#### 46. BP SIGN

560mm x 200mm hardboard sign, Green and Yellow BP Logo on white, BP The Way To Go, minor marks, light scratches, Very Good 8/10



#### 42. COIN PUMP OPEN TIN SIGN

560mm x 152mm double sided tin sign, Black on White, Coin Pump to one side, Open to the other, minor marks, light scratches, minor surface rust, Very Good 8/10



#### 47. ASSORTED MOTORING PRODUCTS

Tallest 210mm tall, Left to right, Shell Handy Oil with Pourer, The Shell Company Of New Zealand Limited, faded, minor marks and scratches, minor dints to rear, Good 7/10 plus, Leggetts Motor Cyclists Roadside Vulcanizer Outfit tin, no lid, remains of product inside, minor marks, light surface rust, small scuffs and paint loss, Good 6/10 plus 102mm plastic Firestone direct The Smart Choice set of 6 coasters in holder, light marks, Very Good 8/10 plus 68mm long, Outfit Anti Dimming Can with instructions for use, GSW Ltd 1941, surface rust, faded, Good 6/10 plus cardboard box Rema Tip Top tyre patches? made in Germany, some product inside box, dirty, minor marks, Good 6.5/10 plus Wakefield Castrolase, Motor Grease, 1LB, faded, light surface rust, small scuffs, scratches, and paint loss, Good 6.5/10 (6)



#### 42A. TEXACO MOTOR OIL ENAMEL SIGN

125mm diameter, double sided enamel sign, Texaco Motor Oil Texaco Reg TM Made by the Texas Company USA, words same both sides, minor outer edge damages, A rare early Original Enamel Sign, Very Good 8/10

#### 43. MOTORING OIL CANS

Tallest 231mm tall, Left to right, Wakefield Castrol Motor Oil, 1 IMP Quart, Red print faded, minor marks, light surface rust, small scuffs and paint loss, Good 7/10 plus an early Wakefield Castrol Motor Oil, 1 Imperial Quart, overall paint loss, minor dints to front, light surface rust, small scuffs and scratches, Good 6/10 plus Wakefield Castrol Motor Oil, 1 Imperial Quart, damaged sticker to right hand side has lifted paint under it, light surface rust, small scuffs and paint loss, Good 7/10 plus Shell Washing Machine Gear Oil 1/4 Imperial Gallon, small scuffs and paint loss, Very Good 8/10 (4)



#### 48. CASTROL OIL BOTTLES

Oil Bottles, Pyro label, Castrol in red and embossed 500ml to shoulder, with metal cap, Castrolite Supergrade, 10W-20-30, paint loss, light surface rust, Very Good 8.5/10 plus no brand bottle, One imperial Pint, with plastic pourer and cap, Castrol XXL 30-40, indistinct and hard to read, Very Good 8/10 (2)



#### 44. CHROME CAR NAME BADGES HOOD EMBLEMS

Car badges etc, longest 420mm, Chevrolet, 3 x Triumph, Triumph Shield, Fordson (Tractor), 2 x Triumph Herald, some damage to enamel, Christchurch, the I has come loose and is blue tacked down, light pitting, minor marks, minor light surface rust, Very Good 7.5/10 (9)



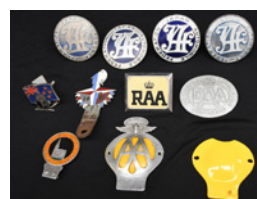
#### 49. BARDAHL OIL PAINTED TIN SIGN

580mm x 290mm tin sign, Green and Black on White background, Bardahl Give your oil more muscle, Green Forearms, folded over tin, has provision to fit onto a stand, minor marks, light scratches, Very Good 9/10



#### 45. USA NUMBER PLATES

Assorted Motor Car number plates from The USA, 303mm x 155mm, 1x each from the following, Alabama, Alaska, Illinois, Iowa, Montana, North Carolina, 2x Pennsylvania, 1x Prince Edward Island, 1x Tenn (Tennessee), 2x Utah, some have some minor paint loss, marks and scratches, minor surface rust, Very Good 7.5/10 (12)

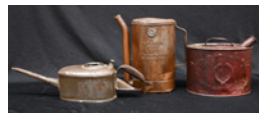


#### 50. AUTOMOBILE BADGES

Assorted car badges, 4x Japan Automobile Federation, Kiwi with NZ Flag, Festival of Britain enamel 1951, RAA (Australia), Dominion Automobile Association DAA (Canada), Christchurch New Zealand with Cathedral, AA New Zealand with spare yellow backing plate, minor wear, some fading, some damage to the enamel badge, Very Good 7.5/10 (10)



**50A. CAV BATTERY SHOP ENAMEL SIGN**  
760mm x 380mm double sided enamel sign in red, black and white, CAV Battery Service Station, Rust marks and chips to outer edges and some to body, Very Good 8/10



**55. MOTORING OIL POURERS**  
Metal Oil Pourers, 370mm long, Kaye's Patent with a K Trade Mark, to both sides, slide open top filling hole, 1 1/2 P 10 D to base, hand soldered, light marks, Very Good 8/10 plus Half Gallon Imperial Liquid Swingspout Trade Mark, pat. Dec 3 1918, Swingspout Measure Co New York - Chicago - Los Angeles light marks and wear, some dints, Very Good 7.5/10 plus Laurel Kerosene Vacuum Oil Company Ltd, has been painted red and wording is hard to read, Marsh Makers Melbourne to base, Good 7/10 (3)



**51. EVEREADY PAINTED TIN SIGN**  
610mm x 155mm White on Red background, Eveready, folded over tin, minor marks and scratches, light under paint surface rust, Very Good 8/10



**56. MOTORING ACCESSORIES**  
Assorted car accessories, Gift Wrapped Hilumin Splash Guards, the bag has some small rips and a bit grubby, Wibroc One Pair Splash Guards, one is painted black, one brown, plus 2 wing mirrors longest is 350mm long, some light pitting to the chrome, Good 7/10 (4)



**52. AC SPARK PLUGS PAINTED TIN SIGN**  
405mm x 760mm tin sign, multicoloured, AC Fire Ring Spark Plugs, with image of a Spark Plug, Distributed by Cooke Howlison Limited Dunedin, dull, wear, scratches, overpaint, Good 6/10



**57. FIRESTONE PAINTED TIN SIGN**  
610mm x 280mm Red and Black on White background, Guaranteed Firestone Retread, has extra holes in sign, minor paint loss, minor marks and scratches, some rippling to top right hand corner, Good 7/10



**53. MOTORING OIL CANS**  
Motoring Oil Cans, Tallest 236mm tall, Left to right, Castrol Supergrade Motor Oil, Super XL 20-50, 1 IMP Quart, minor paint loss, light scratches, minor marks, Very Good 8.5/10 plus Castrol with indistinct Hypoy? Gear Oil, minor paint loss, 1 IMP Quart, light scratches Very Good 8.5/10 plus BP Energol Motor Oil, fading, minor paint loss, scratches including some scratched numbers, light surface rust, Good 7/10 plus Mobil Lube C-140 with Pegasus (faded), 1 IMP Quart, light scratches, wear, surface rust, Very Good 7.5/10 (4)



**58. FLAMMABLE GAS PLASTIC SIGN**  
345mm x 307mm rigid plastic free standing sign, in BP Green and Yellow, Flammable Gas, No smoking, Stop your engine, Apply hand brake, to both sides, scratches, minor marks, Good 7/10



**59. FIRESTONE PAINTED TIN SIGN**  
1800mm x 300mm, tin sign, Firestone with the Firestone Trade Mark, wear to top left hand corner, wear to logo, minor marks, Very Good 8/10



**54. ACE CAR BAR SIGN**  
1220mm wide x 160 mm tall, screen printed tin sign a stand, Ace Car Bar printed to one side, light surface rust/wear, Very Good 8/10



**60. SIDE COVER PLATES TRIUMPH AND BSA BIKES**  
Assorted hard rubber Side Plates for Triumph Motor Bikes, 8 in total, 2 of each type plus 2 for BSA bikes, all have minor wear and marks, Good 7/10 (10)





**61. MOTORING OIL POURERS**

Left to right, 220mm tall, motoring oil pourer, Yellow, with Shell Oil sticker to side, 500ml to the side, minor paint loss, light surface rust, Very Good 7.5/10 plus 200mm tall, with 1 Quart Weights and Measures stamp, plus 175mm tall plus 143mm tall, 1 pint with Weights and Measures stamp, the last three have all over rust, Good, 6.5/10 (4)



**66. ASSORTED MOTORING ITEMS**

Assorted items, longest 120mm long, includes Triumph name badge, fabric Ford emblem, 4 x Mercedes Benz badges, Harley Davidson badge, plastic Air New Zealand Tiki, BSA badge, 2 x blind spot mirrors, light pitting, minor marks, minor light surface rust, Very Good 7.5/10 (14)



**62. 20 AA ROAD SIGN**

600mm x 400mm Black on Yellow road sign from the AA? with the number 20, dint to centre, minor marks, scratches, Good 7.5/10



**67. SHELL KEROSENE DOUBLE SIDED ENAMEL SIGN**

570mm x 330mm flanged double sided enamel sign, Red and Black on White background, Shell Kerosene for lamps, stoves, heaters, one side has wear/staining, rust marks the other side has major enamel loss to top section, wear, Fair 4/10



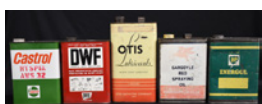
**63. MOBIL DIESEL MAX BOARD SIGN**

685mm x 510mm cardboard sign, Yellow and Black on White, Mobil Diesel Max, rough lower edge, possibly has been cut off, water stains to lower edge, minor marks, Good 7/10



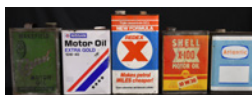
**68. MOBIL OIL BOTTLE WOODED CRATE**

425mm wide x 290mm x 400mm high, Wooden Crate for Mobil Oil with the Gargoyle Trade Mark on all four sides, designed for 1 quart oil bottles, has oil stains to three of the 4 sides, plywood partitions for the bottles are delaminating, Good 6/10



**64. MOTORING TINS**

One Gallon Motoring Related Tins, Castrol HYPIN AWS 32, light scratches, minor marks, Very Good 9/10 plus DWF Seals Out Moisture, small side dint, light scratches, minor marks, Very Good, 8/10 plus Otis Lubricants Worm Gear, light scratches and wear, minor marks, Very Good 8/10 plus Gargoyle Red Spraying Oil, faded, light scratches, minor marks, Very Good 7/10 plus BP Energol, some dints, scratches and wear, light surface rust, Very Good 6.5/10 (5)



**69. MOTORING TINS**

Wakefield Castrol Motor Oil, 1 Imperial gallon, The Oil Circulates Everywhere, faded especially to one side, light scratches and wear, light surface rust, Fair 5/10 plus Nissan Motor Oil Extra Gold, 10w-40, light scratches and wear, light surface rust, minor dints, Very Good 8/10 plus Redex X makes Petrol miles cheaper, light scratches and wear, light surface rust, Good 7/10 plus Shell X 100 Motor Oil, 10W/30, faded, dint to top rear, light scratches and wear, light surface rust, Good 6.5/10 plus Atlantic, Atlantic Union Company NZ Ltd, no cap, light scratches and wear, light surface rust, Very Good 7.5/10 (5)



**65. ASSORTED REFLECTORS**

Assorted reflectors, widest diameter 66mm, 6 large Red, 4 medium Red, 7 small red, 8 red stars, 4 rectangular red, 2 orange, 51 green, 2 part packets Novita Cats Eyes, minor marks and scratches, Very Good 7.5/10 (85)



**70. PINETREE BRAND TURPENTINE WOODEN BOX**

525mm long x 260mm x 380mm high, wooden box, branded on both ends Pine tree Brand, Pure Spirits Turpentine New York USA, with an image of a Pine Tree as a Trade Mark, one side has WJB, 5120, Dunedin, Made in USA, the 4th side is unmarked, split in one panel to the side, minor marks, Very Good 8/10



**71. LUCAS BATTERY TIN SIGN**  
610mm x 300mm tin sign, multicoloured, Lucas your best buy in Batteries, sign is for a display stand, surface rust, light scratches and marks, Good 7/10



**76. CAR POLISH TINS**  
Assorted car polish tins, largest is 130mm wide, Corvette Sales & Service, Waxshine, Country Club, Super Turtle Wax, Freydis, all have some marks, light surface rust and light scratches, Very Good 7.5/10 (5)



**72. DUNLOP DOUBLE SIDED TIN SIGN**  
440mm x 165mm x 110mm tall, free standing tin sign, both sides have Dunlop and the image of JB Dunlop Trade Mark, The most famous tyre trade mark in the world to one side, Dunlop safest strongest sturdiest to the other, light rust marks, scratches, Very Good 7.5/10



**77. MOTORING STARS FORD ZEPHYR**  
Ford Zephyr Chrome Stars, 10 x largest 77mm x 46mm, 58mm x 29mm x 8, 60mm x 50mm x 2, 40mm 5 point star, minor pitting, marks and scratches, some have been cut off, Good 7/10 (21)



**73. BP PETROL BOWSER TIN SIGN**  
252mm x 235mm tin sign, Green and Yellow, BP sign for a petrol bowser, minor marks, small dint to centre, light scratches, Very Good 8/10



**78. BP PETROL BOWSER TIN SIGN**  
252mm x 235mm tin sign, Green and Yellow, BP sign for a petrol bowser, minor marks, some rippling, minor wear, light scratches, Very Good 8/10



**74. SHELL PETROL BOWSER**  
1250mm tall X 550mm wide X 350mm petrol bowser, Shell logo to both sides, Supershell, missing on one side, Gilbarco service plate to side, minor paint loss, light surface rust, Very Good 8/10



**79. ASSORTED SPARKPLUG TINS**  
140mm x 90mm x 35mm AC Sphinx Plug Kit Tin, minor paint loss and scratches, Very Good 8/10, plus 6 x assorted KLG Sparkplug tins, one with a KLG Sparkplug, all have surface rust, light wear and scratches, Good 7/10 plus 2 x Lodge Made In England Sparkplugs, Good 7/10 plus cardboard box Champion Spark Plug, dirty, Good 6.5/10 (10)



**75. CALTEX PINT OIL BOTTLE**  
Caltex One Imperial Pint clear glass Oil bottle, Caltex Oil (NZ) Ltd, with metal band on neck SAE-40, surface rust, AGM E8 on base, Very Good 9/10



**80. MOBIL OIL CO LTD LONDON LEATHER BRIEF CASE**  
430mm wide x 290mm high Leather Briefcase marked to the inside Mobil Oil Co Ltd Mobil House London SW 1 310 and on the inside top, Made in England, Top Grain Cowhide, A Pendragon Product, it has the expected wear of a well used briefcase with wear to the edges, light marks, Very Good 7.5/10



**81. WAKEFIELD CASTROL QUART OIL BOTTLE**

One Imperial Quart Oil Bottle, clear glass, Wakefield Castrol Motor Oil, Property of C C Wakefield & Co Ltd to the rear, with metal pourer, Castrol XL Supergrade, 30-40, paint loss, light surface rust to pourer, minor marks, Very Good 9/10



**86. SHELL PETROL BOWSER TIN SIGN**

295mm x 282mm tin sign, Red and Yellow, Shell sign for a petrol bowser, minor marks, light scratches, Very Good 9/10



**82. BP PETROL BOWSER TIN SIGN**

252mm x 235mm tin sign, Green and Yellow, BP sign for a petrol bowser, minor marks, some rippling to right hand side, minor wear and paint loss, light scratches, Very Good 7.5/10



**87. SHELL PETROL BOWSER TIN SIGN**

295mm x 282mm tin sign, Red and Yellow, Shell sign for a petrol bowser, dull, minor marks, scratches, Good 7/10



**83. BP PETROL BOWSER TIN SIGN**

252mm x 235mm tin sign, Green and Yellow, BP sign for a petrol bowser, dull, minor marks, some rippling to top right hand area, light scratches, Good 7/10



**88. MOBIL AND SHELL QUART OIL BOTTLES**

Oil bottles, Mobiloil, One Imperial Quart no gargoyle, The Vacuum Oil Co Pty Ltd, AGM Z194 P4 to base, minor marks, Very Good 8.5/10 plus Shell Motor Oil One Quart bottle, The Shell Company Of New Zealand Limited, with plain metal cap, AGM C9 to base, minor marks, Very Good 8.5/10 (2)



**84. ASSORTED SPARKPLUG TINS**

3 KLG Sparkplug tins, one with a KLG Sparkplug, all have surface rust, light wear and scratches, Good 7/10 plus 2 x Lodge Sparkplug Tins, largest is 120mm long, surface rust, light wear and scratches, Good 7/10 plus one unidentifiable tin, surface rust, wear and scratches Fair 5/10 plus a Champion Sparkplug made in Canada, surface rust, Good 7/10 (7)



**89. AUTOMOBILE FOOT PEDALS, PLUGS**

Assorted Rubber Foot Pedals for various cars, no brand names, approx 30 plus 2 gear stick knobs plus a quantity of approx 50 assorted Rubber Plugs, O rings, etc, some wear, perishing, Good 7/10



**85. MOBIL OIL DISNEY COMICS**

1964 dated Disney Comics, no. 5 Mickey Mouse And the talking Picture, no. 6 Donald Duck Screaming Cowboy Blues, 4 x no. 12 Donald Duck in Telegram Troubadours, 2 x no.13 Mickey Mouse Ninety Day Wonder, minor marks, Very Good 8/10 (8)



**90. ASSORTED VINTAGE ITEMS**

Various items, largest the booklet, 105mm x 67mm, State Of California Division of Motor Vehicles, Operators License, Aug 12 1929, faded, rip to right hand side, Fair 6/10 plus metal business card/calendar, Jolliffe & Co Ltd Brisbane, 1913 calendar to the reverse, light wear and marks, minor crease, Good 6.5/10 plus Drivers License Manukau County Council date of issue 13-4-62, cancelled 1989, sellotape to inside, minor marks, Good 6.5/10 plus 37mm diameter tyre shaped compass, with mirror to the reverse, very Good 8/10 plus a pair of enamel cufflinks, Ekers India Pale Ale, Very Good 9/10 plus a pair of cufflinks in the shape of sparkplugs, Very Good 9/10 plus Bank of England enamel badge, damage to one corner, Good 6/10 (7)



### 91. ASSORTED VINTAGE ITEMS

95mm diameter AEC, PVC? Advertising Plate, Very Good 8/10 plus Ford Conference 1946 ashtray, EPNS, badly worn, Fair 5/10 plus Hoppe's Lubricating oil, no spout, Very Good 8/10 plus unopened Bars rust Cooling System Conditioner, Fair, 7/10 plus plastic bottle Holts Hi-Moly Oil Additive, dirty, Good 7/10 plus tin of The Clip with the perfect Grip, Good 6/10 plus 2 packets of Pop Tops for Crown Top Bottles, Good 7/10 plus packet of Anti-Corrosion Battery Washers Good 7/10, all tin items have surface rust, light wear and scratches. (9)



### 96. VINTAGE CYCLE REPAIR KITS

115mm long Cycle Repair Kits, Reidrubber, Bowes Seal Fast, Cure-C-Cure by Romac, Weldtite, Regal, Raleigh, (Plastic), Brit-Fix, Ajax, Popular, all tin kits have degrees of surface rust, wear and scratches, Good 7/10 (9)



### 92. ATLANTIC PETROL BOWSER TIN SIGN

305mm x 295mm tin sign, orange and teal, Has the Atlantic A for a petrol bowser, minor paint loss around nail holes, minor marks, Very Good 8.5/10



### 97. ATLANTIC PETROL BOWSER TIN SIGN

305mm x 295mm tin sign, orange and teal, Has the Atlantic A for a petrol bowser, minor paint loss around nail holes, minor marks, Very Good 8.5/10



### 93. ATLANTIC PETROL BOWSER TIN SIGN

305mm x 295mm tin sign, orange and teal, Has the Atlantic A for a petrol bowser, minor paint loss around nail holes, Very Good 9/10



### 98. SHELL PETROL BOWSER TIN SIGN

330mm x 330mm tin sign, yellow and red, Shell, light scratches, light marks to right hand side, minor marks, Very Good 8.5/10



### 94. ASSORTED MOTORING RELATED ITEMS

Tallest, 155mm Energrease, BP, with some contents, minor dints, light marks and scratches, light surface rust, Very Good 7.5/10 plus stapler/letter opener With Compliments of Auto Parts -Timaru, cover on letter opener, minor marks, Very Good 9/10 plus, wooden pen holder with leather insert, Autoparts, Very Good 9/10 plus vintage oiler, Wesco B'Ham England, paint loss, small dint, scratches and wear, Good 7/10 (4)



### 99. BOXED MOTORING ACCESSORIES

Boxed Genuine Accessories, 2 Round Mirror Hoods, plus a box of 5 Chrome Ornamental Vents, Dawson Reed & Co Ltd, Boxes are a bit grubby and misshapen with some rips and marks, products are as new but some light pitting on chrome, Very Good 7.5/10 (3)



### 95. ESSOLUBE QUART AND PINT OIL BOTTLES

Oil bottles, Essolube 1 Quart, Property of Anglo American Oil Co Ltd, minor marks and scuffs, Very Good 8/10 plus Essolube 1 Pint, Property of Anglo American Oil Co Ltd, minor marks and scuffs, Very Good 8/10 (2)



### 100. ASSORTED LUBRICANT TAPS

140mm long, metal lubricant tap, Shell Lubricants, to open turn left, light wear, Very Good 8/10 plus 120mm long Big Boy CBQ Co ILL Decatur, light wear, Very Good 8/10 plus 112mm long Speedie, CBQ Co, light wear, Very Good 8/10 (3)



**101. VINTAGE TYRE REPAIR KITS**

130mm x 95mm Romac Puncture Repair Kit Motorway patches, Bowes Seal Fast, 115mm long Cycle Repair Kits, Senior Cycle Outfit, Regal, Romac, Brit-Fix, all have degrees of surface rust, light scratches and wear, Good 7/10 (6)



**106. VINTAGE TYRE REPAIR KITS**

Puncture repair kits, 85mm x 85mm John Bull Motor Cycle Tyre Kit, Ace Tube Repair Heat Patches with paper label, 115mm cycle kits, Brit-Fix, Ajax, Dunlop, Moseley, Hercules, all have degrees of surface rust, light scratches and wear, Good, 7/10 (7)



**102. QUART AND PINT OIL BOTTLES**

Oil Bottles, 1 Quart, Weights and Measures acid etched crown to base, minor marks, Very Good 8.5/10 plus One Imperial Pint, minor marks, Very Good 8.5/10 (2)



**107. SHELL PETROL BOWSER TIN SIGN**

330mm x 330mm tin sign, yellow and red, Shell, light scratches, minor marks, to right hand side, Very Good 8/10



**103. SHELL PETROL BOWSER TIN SIGN**

330mm x 330mm tin sign, yellow and red, Shell, light scratches, minor marks, Very Good 8.5/10



**108. QUART AND PINT OIL BOTTLES**

455mm tall Cobalt Blue Oil Bottle, Tiolene Motor Oil, One Liquid Quart, repro bottle, Excellent 9.5/10 plus, 347mm tall ISL to lower back, patchy light haze, minor marks, Very Good 7.5/10 plus 500ml, minor marks, Very Good 9/10 (3)



**104. SHELL PETROL BOWSER TIN SIGN**

330mm x 330mm tin sign, yellow and red, Shell, minor marks, Very Good 8.5/10



**109. BOXED MOTORING ACCESSORIES**

Boxed Genuine Accessories, 2 Round Mirror Hoods, plus a box of 4 Chrome Ornamental Vents, Dawson Reed & Co Ltd, Boxes are a bit grubby and misshapen with some rips and marks, products are as new, but some light pitting on the chrome, Very Good 7.5/10 (3)



**105. ACE MOTORING PRODUCTS**

Left to right in plastic containers, tallest 212mm, Gasket Cement, De-Frost, Windscreen and Glass Cleaner, Ethylene Glycol Anti Freeze, Brake Fluid, all with minor marks and wear, Very Good 7.5/10 plus tin Nu-Tone Black Tyre Finish, Hood and fabric dressing, light surface rust, minor paint loss, light wear and scratches, Good 7/10 (7)



**110. ACE MOTORING PRODUCTS**

Left to right, Tallest 132mm, in tin, Rubber cement, High Speed Silicone wax, cold patching Tube Repair outfit, Superfine French Chalk, Tube Repair Outfit, 2 x Tube Repair Heat patches, light surface rust, minor paint loss, light wear and scratches, Good 6.5/10 (7)



**110A. ESSOLUBE QUART OIL BOTTLE**

Essolube 1 Quart, Property of Anglo American Oil Co Ltd, minor marks and scuffs, light internal haze, Very Good 8/10



**116. ASSORTED VINTAGE TINS**

110mm tall John Bull Vulca Grip Tyre Repair Kit, plus 130mm x 90mm, Cure-C-Cure Tube repair Outfit, plus 115mm long, John Bull Repair Outfit, plus 70mm x 48mm Vincent's Tablets Headaches, Influenza etc, plus 38mm 2 x Lectra Valve Insides with contents, Schrader Valve Insides with contents, all have degrees of surface rust, scratches and wear, Good 6/10 (7)



**111. VINTAGE TYRE REPAIR KITS**

Puncture repair kits, 130mm x 95mm, Cure-C-Cure by Romac, 115mm kits, Bowes Seal Fast, The Empire, Reidrubber, Britannia, Chemico (blue tin) Chemico (orange tin), Popular, with some contents, John Bull, all have degrees of surface rust, scratches and wear, Good, 6/10 (9)



**117. BARS LEAKS TIN SIGN**

395mm x 180mm tin sign, Brown over Yellow, part of a display stand, we sell and recommend Bars Leaks, This stand remains the property of H O Wills Ltd, to lower right hand corner, two holes on right hand side have been enlarged, minor marks, light scratches, Very Good 8/10



**112. CYCLE SIGN**

350mm diameter, silver on blue, modern sign with image of a bicycle, scratches and scrapes, Good 6.5/10



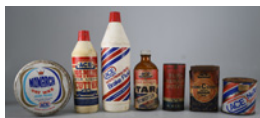
**118. FIRESTONE PAINTED TIN SIGN**

610mm x 240mm tin sign, Red and Black on White background, Firestone New Tyres, Guaranteed Retreads, paint loss, scratches, some holes enlarged, Good 6/10



**113. FIRESTONE TIN SIGN**

320mm X 90mm Tin sign with rolled over edges, designed for a stand, White on Red background, Firestone, paint loss, lower right hand corner, and minor loss elsewhere, minor surface rust, Good 7/10



**114. ACE MOTORING PRODUCTS**

Left to right, tallest 230mm, Monarch Car Wax tin, plastic Pre Polish Mild Liquid Cutter, Extra Heavy Duty Brake Fluid, glass bottle Road Bitumen and Tar Remover, Tin Tube Repair Outfit, Cure-C-Cure Patch Repair Kit, Nu-Tone Black Tyre Finish, light surface rust, minor paint loss, light wear and scratches, Good 7/10 (7)



**119. BOXED MOTORING ACCESSORIES**

Boxed Genuine Accessories, Round Mirror Hood, 2 Box of 5 Chrome Ornamental Vents, Dawson Reed & Co Ltd, The HP car tray, for Picnic Snacks, North West Plastics Limited, Boxes are a bit grubby and misshapen with some rips and marks, products are as near new, Very Good 7.5/10 (4)



**115. ETCHED WAKEFIELD PINT OIL BOTTLE**

Etched Oil Bottle, Property of C C Wakefield & Co Ltd to both sides, 1 Pint, minor marks, Very Good 8.5/10



**120. ADVERTISING ENDS OFF OIL BOXES**

240mm x 360mm Plume Motor Spirit, Vacuum Oil Company, plus Big Tree Benzine A S Patterson & Co, Sole Imports, fading to red print, minor marks, split on the big tree, secured at the back, plus a side from oil box Vacuum Oil Company, split in two, Fair 6/10 (3)



**121. ASSORTED VINTAGE ITEMS**

105mm wide x 90mm tall, Tower Plus Roadside Vulcanizer Damp Proof Type, surface rust, scratches and wear, Good, 6/10 plus Aluminium Clamp, Very Good 8/10 plus 130mm x 90mm Romac Puncture Repair Kit, minor marks, Very Good 8.5/10 plus Bowes Seal Fast Puncture Repair Outfit, with some contents, surface rust, light scratches and wear, Good, 7/10 (4)



**126. ASSORTED VINTAGE ITEMS**

118mm tall Chamberson Knee Action Oil, paper label on tin, label is dirty, Very Good, 7/10 plus 130mm tall Liksol Oily Coat Dressing, surface rust, scratches and wear, Good, 7/10 plus 128mm tall Fortron Cooling System Conditioner, no lid, light surface rust, light scratches and wear, Good 7.5/10 plus 122mm tall Castrol GTX High Performance Motor Oil Radio, untested some fading, and label is lifting in places, Good 7/10 plus Coruba Jamaica Rum Radio untested some fading, has some oil or similar spill on it, Fair 5/10 plus, 88mm diameter, Acme Black Harness Dressing Tin with image of a horse, Guthridge & Co Melbourne, some paint loss and wear, Very Good, 7.5/10 (6)



**122. STAMINOL MOTOR OIL BOTTLE**

342mm tall oil bottle, painted Staminol Premium Grade Motor Oil, no size mentioned but looks like quart size, minor marks, Very Good 8.5/10



**127. SHELL DIESELINOLINE PETROL BOWSER TIN SIGN**

330mm x 330mm tin sign, multicoloured Shell Diesoline, minor marks, light scratches, Very Good 8.5/10



**123. CALTEX PETROL PAINTED TIN SIGN**

330mm x 430mm tin sign, red, white and black, Caltex Petrol, light scratches, minor marks, Very Good 8.5/10



**128. CASTROL OIL POURER**

257mm tall oil can/pourer, painted Castrol Motor oil, The Masterpiece in Oils to both sides, printed Quart to upper body and BCM Pat Applied for on handle, light surface rust, small scuffs and paint loss, Very Good 7.5/10



**124. SHELL DIESELINOLINE PETROL BOWSER TIN SIGN**

330mm x 330mm tin sign, multicoloured Shell Diesoline, minor marks, Very Good 8.5/10



**129. BOXED MOTORING ACCESSORIES**

Boxed Genuine Accessories, 350mm long Station Wagon Stainless Steel Dust Reflectors, 2 complete and 2 extra brackets, plus 540mm long Car Door Scuff Plates, Dawson Reed & Co Ltd, Boxes are a bit grubby and misshapen with some rips and marks, products are as near new, plus 3 x Glass Headlight Covers in a bag, Hella -Australia Pty Limited Mentone Vic, bag is ripped and a bit grubby, All Good 7/10 (3)



**125. VINTAGE CAR HUBCAPS**

73mm diameter inside thread hub cap, Hudson Motor Car Co, Made in Detroit USA, light wear and marks, Good 7/10 plus 85mm diameter inside thread hub cap, Buick, split on rim edge, light wear and marks, Good 7/10 plus 65mm approx, DB (Dodge Brothers), misshapen and battered, Fair, 4/10 (3)



**130. SHELL GLASS ASHTRAY**

120mm wide glass ashtray, Shell Logo to centre, edge chips to cigarette rests, 20mm base edge scratch, Good 6/10



### 131. ASSORTED VINTAGE ITEMS

Tallest is 182mm tall, Alfa-Laval Separator Oil tin, under surface rust, wear to some sides, light scratches, Good 6.5/10 plus Leggett's Bull-Dog Tube Vulcaniser tin, with some contents, minor paint loss, under surface rust, light scratches and wear, Good 6.5/10 plus Shell Specialised Lubricants, minor paint loss, under surface rust, light scratches and wear, Very good 7/10 plus Cardboard box, Campbell Model CC3, Clearance lamp with original contents, tear in lid, and upper box, lamp is as new, Very Good 7.5/10 plus Genuine Lockheed Hydraulic Brake Fluid, under surface rust, wear and faded, light scratches, Good 6.5/10 plus glass bottle, Lucas Battery Filler with plastic spout, wear to the Pyro red print, internal haze, Good 7/10 (6)



**136. ASSORTED VINTAGE TINS**  
Assorted tins, left to right, largest item is 240mm x 162mm x 255mm high, Caltex Kerosine, Blue, Caltex Oil (NZ) Limited, surface rust, minor dints, slight scratches and marks, Good 7/10 plus Alfa-Laval Separator Oil, faded, light rust marks, light wear and scratches, two holes have been pierced into the lid and one corner of the top, Good 6/10 plus Pluvol Leather's Best Friend, Distributors H. Lightbrand Ltd, Christchurch, Auckland, surface rust, light scratches and marks, Good 6.5/10 plus Champion Car polish and Cleaner, Hi-Speed, 18oz price 4/6, with contents, faded, light rust marks, light wear and scratches, Good 6.5/10 plus in front, Nubo, Garage Tools and Accessories, surface rust, scratches and marks, Fair 5/10 plus Rema Tip Top Tubeless Vulcanizes, Tire Repair, with contents, surface rust, light scratches and marks, contents in excellent condition, Good 7.5/10 (6)



### 132. ATLANTIC REGULAR BOWSER TIN SIGN

305mm x 287mm tin sign, Orange, White on a Teal background, for a petrol bowser, has the Atlantic A, Regular, minor paint loss, light scratches, Very Good 7.5/10



### 137. EUROPA BOWSER TIN SIGN

250mm x 274mm tin sign for a petrol Bowser, in Red, a simple cut out E for Europa, minor paint loss, Very Good, 8.5/10



### 133. ATLANTIC REGULAR BOWSER TIN SIGN

305mm x 287mm tin sign, Orange White on a Teal background, for a petrol bowser, has the Atlantic A, Regular, minor paint loss, light scratches, Very Good 8.5/10



### 138. CLASS II TIN SIGN

254mm diameter, painted metal sign, Black over Brown, Class II (2), minor marks, Very Good 9/10



### 134. SIMMS PATENT PETROL GAUGE

620mm long petrol gauge marked Simms Type H Patent Petrol Gauge, it has a counter to the side minor marks, Very Good 8/10



### 139. NOVELTY FOOT PEDALS

225mm long novelty foot shaped Foot Pedals, left hand one has Cal-Custom Japan, the centre has Taiwan, the right is plain, minor marks, paint loss to right hand one, Very Good 8/10 (3)



### 135. MOTORING OIL BOTTLE POURERS

Motoring Oil Bottle Pourers, Tallest 158mm tall, Tin Castrol Supergrade, 30-40, faded, surface rust, light scratches and wear, Fair 5/10 plus plastic with cap, Castrol, wear and paint loss, Fair 5/10 plus plastic Caltex Motor Oil, with star, minor wear and marks, Very Good 7.5/10 plus plastic with cap, in Green, probably BP, 30 sticker to centre, Very Good 8.5/10 plus plastic with cap, plain minor marks and wear, Good 6.5/10 (5)



### 140. ASTON MARTIN GLASS COASTERS

160mm x 153mm, pair of glass coasters with etched Aston Marton and the Aston Martin wings Trade Mark, minor marks and light scratches, Very Good 8.5/10 (2)





**141. ASSORTED VINTAGE TINS**

Tallest 180mm, widest diameter 120mm, back row, Simoniz Wax For Cars tin, some fading, light surface rust, minor marks and light scratches, Good 6.5/10 plus aerosol can for Rock Oil Professional Chain Lube (empty) some light staining, Good 7/10 plus Red Cardinal Polish tin, light surface rust, minor marks and light scratches, Very Good 7/10 plus Liksol Black Rubber Dressing, Hood Tyres, Running Boards, A Food For All Rubber, surface rust, marks and light scratches, Good 6/10 plus Freydis Plastic Car Polish, surface rust, marks and light scratches, Good 6/10 plus Milford Silicone Cargloss, surface rust, marks and light scratches Good 6/10 (6)



**146. BIG TREE MOTOR SPIRIT PETROL CAN**

250 mm x 150 mm x 320mm high, Petrol Tin marked Big Tree Motor Spirit to both sides and 2 Imperial Gallons and Petroleum Spirit Highly Inflammable marked on the top. Has brass cap, originally painted blue, paint loss and wear, rust marks, Good 6/10



**142. EUROPA AND CALTEX OIL BOTTLES**

Oil bottles, Europa - Lube One Quart, Associated Motorists Petrol Co Ltd, 2136 D4 to base, minor marks, light haze, Very Good 8/10 plus Caltex Reg TM One Imperial Pint, with star, Caltex Oil (NZ) Ltd with metal band on neck SAE-30W, (rust marks and hard to read), AGM A8 on base, inner rim edge nibbles, light scratches, Good 7/10 (2)



**147. CLASS II TIN SIGN**

254mm diameter, painted tin sign, reflective adhesive Class II on black background with red band to outer edge, minor marks, light scratches, Very Good 8/10



**143. CLASS II TIN SIGN**

254mm diameter, painted metal sign, Black over Brown, Class II (2), minor marks, scratch to centre of sign, Very Good 8.5/10



**148. MOBIL OIL SPECIAL BOTTLE HOLDER**

405mm wide x 180mm x 410mm high, metal rack with wooden top sign, Mobiloil Special to hold oil bottles, on one side 4 larger holes, 94mm x 94mm and 5 smaller holes 75mm x 75mm, surface rust on stand, paint loss and wear to sign, Good 6.5/10



**144. ESSO TIN SIGN**

270mm diameter tin sign, Blue over cream with red band to outer edge, ESSO, in script, paint loss around edges, still peeling, light surface rust, Good 6.5/10



**149. ASSORTED MOTORING ITEMS**

Includes Petrol Caps, Indicator reflectors, hubcap covers, battery gauge, Lucas Contact set, the letters L, O, V, X, M, and the number 5, minor marks and scratches, minor pitting to chrome, Very Good 7.5/10 (26)



**145. PETROL BOWSER NOZZLES**

Longest is 320mm long, nozzles from old petrol bowsers, only markings on centre one, Moore Patent Filler, 2981, all have minor marks, Very Good 8/10 (3)



**150. TYRE PUMPS \*\*\*\***

Tyre Pumps, Longest 555mm, Left to right, Kingsman Limited Birmingham, missing hose??, plus unmarked, plus Copper with wooden handle, Ernest H Hill Limited Sheffield plus Copper with wooden handle, British made Prima Birmingham, all have light surface rust, marks and wear, Very Good 7/10 (4)



**151. ASSORTED VINTAGE TINS**

Tallest, 128mm tall, left to right, Dura-gilt Metal Polish, size 2, rust marks, minor paint loss, light scratches and wear, Good 7/10, plus Fortron New Generation Oil Conditioner, minor marks and wear, Very Good 7.5/10, plus Wynn's Racing Formula for Gas, unopened, rust marks, minor paint and marks, Good 7/10, plus Bardahl Fast Flush, minor marks, and wear, Very Good 7.5/10 plus Bardahl Cooling System Stop Leak, minor rust marks, minor paint and marks, Good 7/10, plus Bardahl Oil Treatment 2, rust marks, minor paint loss, light scratches and wear, Good 7/10, plus Bars Rust Cooling System Conditioner, unopened, rust marks, minor paint and marks, Good 7/10, plus Min Polishing Cream with contents, rust marks, faded, paint loss, light scratches and wear, Fair 5/10, plus boxed Dry Cell Type Mini Vacuum Cleaner minor marks and wear to cardboard box, Very Good 8/10 (9)



**156. PENNZOIL MOTOR OIL LIDDED CAN**

350mm high x 305mm diameter oil can Pennzoil Multi Vis Motor Oil, SAE 20W-40, Pennzoil Company, 35 Pounds Net weight, with handle and lid (rusty), light surface rust, light wear and marks, Very Good 7.5/10



**157. CALTEX BOWSER SIGN**

254mm diameter, tin sign in Red and Black over white background, Caltex with the red star logo, damage around nail holes to both sides, minor marks, Good 7.5/10



**152. CLASS II TIN SIGN**

254mm diameter, painted tin sign, reflective adhesive Class II on Black background with red band to outer edge, Class II (2) faded, rippling, wear and minor marks, light scratches, Good 6.5/10



**158. CALTEX BOWSER SIGN**

254mm diameter, tin sign in Red and Black over white background, Caltex with the red star logo, faded, scuffs to left hand side, damage around holes, minor marks, Good 7/10



**153. CALTEX BOWSER SIGN**

254mm diameter, tin sign with adhesive sticker in Red and Black over white background, Caltex with the red star logo, damage around nail holes with the sticker starting to peel, minor marks, Good 7/10



**154. SPARK PLUG PACKETS**

Longest 100mm, Assorted Cardboard Spark Plug Packets, KLG, Bosch, AC, no contents, some ends missing, small rips and marks, Good 7/10 (32)



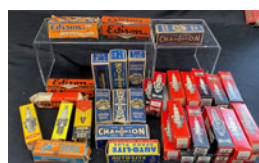
**159. CAR NAME BADGES OXFORD, MORRIS ETC**

Car badges for assorted cars, longest 240mm, Morris Oxford, Morris, 1100, Oxford, Hillman, pitting and surface rust on the Oxford otherwise minor marks and pitting, Very Good 7.5/10 (5)



**155. CALTEX QUART OIL BOTTLE**

Caltex Reg One Imperial Quart Oil Bottle, Caltex Oil (NZ) Ltd ISP 438 DG on base, Very good 9/10



**160. SPARK PLUG PACKETS**

Longest 100mm, Assorted Cardboard Spark Plug Packets, Champion, Eyquem, Lodge, Auto-lite, Edison, Vesta, Beru, no contents, some ends missing, small rips and marks, Good 7/10 (41)



**161. MOTORING TINS**  
Tallest, 242mm tall, Mobil 1 Imperial Gallon Tin, Brake Fluid (hard to read) Vacuum Oil Company, faded, light scratches and wear, light surface rust, Fair 5/10 plus Shell Grease R3 tin, 2 Kilograms, Shell Oil New Zealand Limited Wellington, damage to grease sticker, dint to lower body, rust that's partially obscured the writing, light scratches and marks, Fair 5/10 plus Caltex grease, 904, faded, light scratches and wear, light surface rust, Good 6/10 (3)



**166. TYRE REPAIR KITS & SPARK PLUG GAUGE**  
Puncture repair kits, 108mm, Bowes Seal Fast, The Empire, Ride Mosley Tyres, its top is very rusty, Dunlop Long Cycle Repair Outfit, Boomerang, Hindsdale, all have degrees of surface rust, scratches and wear, Good 6/10 plus AC Sparkplug Gap Gauge, Very good 8/10 (7)



**162. CALTEX QUART OIL BOTTLE**  
Caltex Reg T M One Imperial Quart Oil Bottle, Caltex Oil (NZ) Ltd with metal band on neck SAE-40 surface rust, AGM CS V10 on base, Very Good 9/10



**167. TEXACO TRIANGULAR SIGN**  
465mm x 425mm triangular reproduction tin sign, White and Black on Red background, Texaco Motor Spirit with the Texaco Trade Mark Star, Property of Texas Co AA/Asia) Ltd, Brownmann Ltd Ch-Ch, minor marks, Very Good 9/10



**163. CALTEX BOWSER SIGN**  
254mm diameter, tin sign in Red and Black over white background, Caltex with the red star logo, spots of tar? minor marks and paint loss, Good 7.5/10



**168. CAR NAME BADGES ZODIAC, VELOX, CORTINA ETC**  
Car badges for assorted cars, longest 450mm, 2x Velox, 3x Zodiac, Cortina, Anglia, Oxley, Coupé, 2x Consul, light pitting, minor marks, minor light surface rust, Very Good 7.5/10 (11)



**164. CALTEX BOWSER SIGN**  
254mm diameter, tin sign in Red and Black over white background, Caltex with the red star logo, minor marks and light scratches, Very Good 8.5/10



**169. EUROPA QUART OIL BOTTLES**  
Europa - Lube One Quart, Associated Motorists Petrol Co Ltd, 2136 H9 to base, minor marks, light haze, Very Good 8.5/10 plus the same, L5 to base, minor marks, light haze, Very Good 8.5/10 (2)



**165. SPARK PLUG PACKETS**  
Longest 145mm, Assorted Cardboard Spark Plug Packets, all Champion including 4 larger 10 pack boxes, no contents, some ends missing, small rips and marks, Good 7/10 (28)



**170. SPARK PLUG PACKETS**  
Longest 263mm, Assorted Cardboard Spark Plug Packets, all AC, including an 8 pack and a 10 pack, the 10 pack has 8 individual empty packets inside, all have no contents, some ends missing, small rips and marks, Good 7/10 (21)



**171. SHELL MOTOR OIL TIN**  
67mm wide x 110mm tall (including handle), x 37mm deep, Shell Motor Oil, Shell-Mex Ltd Kingsway London W C 2 to front and back, Shell to both ends, light surface rust, minor marks, Very Good 8.5/10



**176. SHELL OIL TIN**  
114mm x 160mm x 73mm Shell Oil, One Imperial Quart Net, The Shell Company of New Zealand Ltd, Shell to both ends, minor marks, light surface rust, small scuffs and paint loss to one side, tiny patch of brown paint to one side, small hole to top, vibrant colours, Very Good 8.5/10



**172. OPEN SIGN**  
145mm x 580mm tin sign for a stand, adhesive stick on Open, minor marks, Very Good 9/10



**177. DUNLOP STEELTRAK TYRES TIN SIGN**  
380mm diameter tin sign, Red, Black on Yellow, Dunlop Steeltrak The Steel Belted Radial, light discolouration, paint loss and rust marks to the lower edge, small dints to both sides, Very Good 7.5/10



**173. SUNBEAM TIN SIGN**  
458mm x 152mm light tin sign in Yellow, Black and Red, Sunbeam, light scratches and marks, Very Good 8/10



**178. DANGER LIVE WIRES ENAMEL SIGN**  
300mm x 220mm enamel sign, Red and Black on White, Danger Live Wires Do Not Climb, New Zealand Electricity with image of power pylon and figure getting a shock while climbing, Moffat 100 to lower left hand corner, minor chipping to lower edge, minor marks, Very Good 9/10



**174. SPARK PLUG PACKETS**  
Longest 175mm, Assorted Cardboard Spark Plug Packets, all Quikfyr, including a 10 pack no contents, larger box has been cut down with no lid, rips and marks, Good 7/10 (11)



**179. CAR NAME BADGES, HERALD, SPECIAL**  
Car badges for cars, longest 510mm, 9x Special, and one Herald, light pitting, minor marks, minor light surface rust, Very Good 7.5/10 (10)



**175. ATLANTIC UNION QUART OIL BOTTLE**  
Clear glass bottle, Atlantic Union Oil Company Ltd, One Quart to rear with acid etched crown, with a plastic pourer, Castrol XL 20-50, minor marks, light scratches, Very Good 8/10



**180. ASSORTED SPARKPLUG TINS**  
140mm x 90mm x 35mm Spark Plug tins, KLG and Lodge, surface rust, wear and scratches, Good 6.5/10 (13)



**181. DANGER LIVE WIRES ENAMEL SIGN**  
300mm x 220mm enamel sign, Red and Black on White, Danger Live Wires Do Not Climb, New Zealand Electricity with image of power pylon and figure getting a shock while climbing, Moffat 100 to lower left hand corner, minor chipping to edge, minor marks, Very Good 9/10



**186. AC DELCO FILTERS TIN SIGN**  
610mm x 105mm tin sign, Red and Blue on White background, AC Delco Filters, paint loss to edges, light scratches and scuff below letter L, minor marks, Good 7/10



**182. WAKEFIELD CASTROL QUART OIL BOTTLE**  
One Imperial Quart Oil Bottle, clear glass, Wakefield Castrol Motor Oil, Property of C C Wakefield & Co Ltd to the rear, weights and measures acid etched crown to shoulder, chip to collar, with metal pourer, Castrol XL Supergrade, 30-40, minor marks, Very Good 9/10



**187. SHELL MEDICINAL PARAFFIN OIL TIN**  
114mm x 160mm x 73mm Shell Oil, One Imperial Quart Net, The Shell Company of New Zealand Ltd, dull, minor marks, surface rust, one side in poor condition, information on various products to both ends, holes in the tin, small hole to top, refuse if seal on spout not intact on lid, Good 6.5/10



**183. GOODYEAR PAINTED TIN SIGN**  
1830mm x 380mm, blue and white with black trim, Goodyear with the Goodyear Logo, minor marks, Very Good 9/10



**188. MOBIL AND SHELL PINT OIL BOTTLES**  
Oil bottles, Mobil Oil, One Imperial Pint, no gargoyles, The Vacuum Oil Co Pty Ltd, AGM C9 to base, minor marks, Very Good 9/10 plus Shell Motor Oil One Pint bottle, The Shell Company Of New Zealand Limited, AGM 12 to base, Very Good 9/10 (2)



**184. AC DELCO FILTERS TIN SIGN**  
610mm x 105mm tin sign, Red and Blue on White background, AC Delco Filters, minor paint loss to lower left hand corner, minor marks, Very Good 8/10



**189. FIRESTONE PAINTED TIN SIGN**  
1800mm x 450mm, Firestone Put Quality First, damage to top left hand corner, minor paint loss, light scratches and marks, Very Good 8/10



**185. VESTA SPARK PLUGS DISPLAY CABINET**  
485mm x 525mm metal display cabinet that can be mounted onto a wall, Vesta Self-Cleaning Spark Plugs, 2 doors that open to show 25 compartments, minor paint loss, light scratches and wear, Very Good 8/10



**190. DUNLOP PAINTED TIN SIGN**  
300mm x 1736mm Dunlop tin sign with the Dunlop Trade Mark, tall slender tin sign, paint loss around the fixing holes, Very Good 9/10



### 191. ASSORTED OIL AND MOTORING TINS

Left to right, 195mm tall to top of spout, Shell Handy Oil with Pourer, The Shell Company Of New Zealand Limited, faded, minor marks and scratches, Good 7/10 plus 185mm tall to top of spout, CMC Product, Wellington, product information to rear, minor paint loss, minor marks and scratches, Good 7/10 plus 133mm tall, A Ford Product, Rust Inhibitor, 8 Ounces Made in Canada, light surface rust, minor marks and scratches, Good 7/10 plus 132mm tall, Cling Surface Fan & V-Belt Dressing, Stops that squeaky belt, light surface rust, minor marks and scratches, Very Good 8.5/10 plus 117mm tall, Shell Grease, Net Weight 1LB, product info to rear, made In USA, patch of wear to left of the S in Shell, light surface rust, minor marks and scratches, Very Good 7.5/10 plus 67mm diameter, Bakelite? lidded container, Bluemel's Oiled Inflator Washers, Two Dozen, Made In England, minor marks, Very Good, 8.5/10 plus 52mm container, Whiz Valve Grinding Compound, product info on base, Hollinghead Corp, USA and Canada, 2oz, minor marks and scratches, Very Good 7.5/10 (7)



### 196. CASTROL OIL AND MOTORING POURER AND TINS

Left to right, 280mm tall Castrol Oil Pourer, Castrol to one side, brass One Quart tag to top of can, ASTRO LTD stamped into pourer, missing the C and L? Paint loss to red and white Castrol symbol, One Pint, dints to rear, light wear and scratches, Good 7/10 plus 170mm tall Castrol Gear Oil, HYPOY 90EP, minor paint loss and scratches, minor dint to rear, Very Good, 8.5/10 plus 197mm tall, Wakefield Castrol Gear Oil, HYPOY 90, paint loss, light scratches and wear, minor dints, Good 7.5/10 (3)



### 197. ATLANTIC TIN SIGN

420mm x 216mm tin sign, in Red, Blue and White, Atlantic in Red print, minor marks and scratches, Very Good 8/10



### 192. AC DELCO FILTERS TIN SIGN

610mm x 105mm tin sign, Red and Blue on White background, AC Delco Filters, minor paint loss top left hand corner, minor marks, Very Good 8.5/10



### 198. ASSORTED OIL AND MOTORING TINS

Left to right, 148mm tall to top of spout, Shell Lighter & Cleaning Fluid, 8 fl oz, The Shell Company Of New Zealand Limited, faded, minor marks and scratches, Good 7/10 plus 192mm tall to top of spout, All-Purpose Oil, Raleigh Industries England, image of bicycle to rear, minor marks and scratches, dint to rear, Good 7/10 plus 112mm tall, Romac Regd, Cure a Cure Parch Solution, light surface rust, some paint loss, minor marks and scratches, Good 6.5/10 plus 135mm tall 3-in-one Multi purpose Oil 3 fl oz minor marks and scratches, Very Good 8/10 plus 88mm tall Elna Special Sewing Machine Oil, broken spout, light surface rust, some paint loss, minor marks and scratches, Good 7/10 plus 80mm x 50mm tin Rema Tip Top image of a bike tyre, light surface rust, some paint loss, minor marks and scratches, Good 6.5/10 (6)



### 193. EVEREADY PAINTED TIN SIGN

298mm x 75mm White on Red background, Eveready, folded over tin, minor marks and scratches, Very Good 8.5/10



### 194. BSA TIN SIGN

142mm x 230mm repro tin sign with in Red and Black on Yellow background, BSA logo of three rifles, faded under paint surface rust, some minor buckling minor marks, Good 7/10



### 199. CHROME AND PLASTIC CAR NAME BADGES

Assorted car badges, longest, 200mm 2 x Bluebird, Daihatsu, Alpine, 4.2Litre, and plastic ones of Datsun 140J, Starlet, Mazda, minor marks, minor light surface rust, wear on plastic Datsun badge, Very Good 7.5/10 (8)



### 195. MOBIL AND SHELL PINT OIL BOTTLES

Oil bottles, Mobil Oil, One Imperial Pint, no gargoyle, The Vacuum Oil Co Pty Ltd, AGM D2 to base, minor marks, Very Good 8/10 plus Shell Motor Oil One Pint bottle, The Shell Company Of New Zealand Limited, AGM CO to base, minor marks, Very Good 8.5/10 (2)



### 200. BIG TREE LUBRICANT TAP

140mm long, metal tap, Big Tree Lubricant, to open turn left to front, HB Chalmers Diecast Melbourne to rear, light wear, Very Good 8/10



**201. ASSORTED OIL AND MOTORING TINS**

Tallest is 138mm tall, left to right, MIC Cotter Pins, light surface rust, light scratches, minor marks, Good 7/10 plus Finest Cycle Lubricating Oil tin, Brown Brothers London Edinburgh, small upper edge dint, light surface rust, light scratches, minor marks, Dull to one side, Good 7/10 plus CMC Penetrating Oil Chemicals Manufacturing Company Wellington, damage to front part of label, light surface rust, light scratches, minor marks, Good 7/10 plus G U D Penetrating Oil, packed by Stewart Foot & Co Ltd Auckland, missing pourer, light surface rust, light scratches, minor marks, Good 7/10 plus unopened can of Reactor Cooling System Cleaner, net 5oz, price in marker pen to top, minor marks, Very Good 9/10 plus a can of Reactor Cooling System Cleaner, this one is opened and is 142g, minor marks, Very Good 8/10 plus KEMA Vulcanising Heat Patches tin, perforated scraper to lid, Chemicals Manufacturing Company Wellington, marks to the label, light surface rust, Good 7/10 (7)



**206. EVEREADY PAINTED TIN SIGN**

357mm x 30mm tin sign, early Eveready Trade-Mark Batteries, folded over tin, faded, under surface rust, light wear, Good 7/10



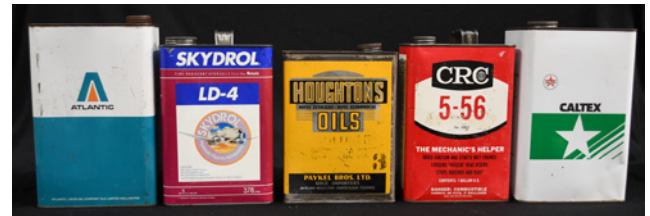
**207. DUNLOP ROADSTER TYRE STAND**

920mm tall x 185mm wide x 480mm deep when opened, metal and tin stand for Dunlop Roadster Tyres, it would fit 4 when full, surface rust on the stand minor marks and minor under paint surface rust on the tin sign, Very Good 7.5/10



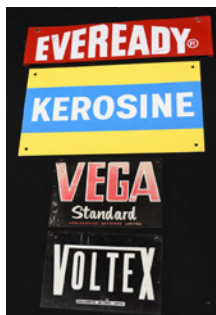
**202. MOBIL AND SHELL PINT OIL BOTTLES**

Oil bottles, Mobil Oil, One Imperial Pint, with the gargoyle, The Vacuum Oil Co Pty Ltd, AGM D9 to base, minor marks, Very Good 9/10 plus Shell Motor Oil One Pint bottle, The Shell Company Of New Zealand Limited, AGM 18 to base, minor marks, Very Good 8/10 (2)



**208. MOTORING TINS**

Motoring Related Tins, Atlantic, 5 litres, Atlantic Union Oil Company NZ Ltd Wellington, scratches and wear, light surface rust, Very Good 8/10 plus Skydrol LD-4 Hydraulic Fluid by Monsanto, 3.78 litres, light scratches and wear, light surface rust, Very Good 8/10 plus Houghton's Oils Paykel Brothers, light scratches and wear, light surface rust, Very Good 8.5/10 plus CRC 5-56 The Mechanics helper, light scratches and wear, light surface rust, Very Good 7/10 plus Caltex, The Caltex Oil NZ Ltd major paint loss, dints to one side, Good 7/10 (5)



**203. ASSORTED TIN SIGNS**

Tin signs, top to bottom, 300mm x 75mm White & Red Eveready, rough around nail holes, light scratches, Very Good 8/10 plus 268mm x 153mm White, Blue and Yellow, Kerosine (American Spelling), Repro? minor marks, Very Good 8.5/10 plus 153mm x 100mm Vega Standard Amalgamated Batteries Limited, fading, slight dint to top left corner, minor marks, Good 7/10 plus Voltex Amalgamated Batteries Limited, slight dints to top corners, minor marks, Good 7.5/10 (4)



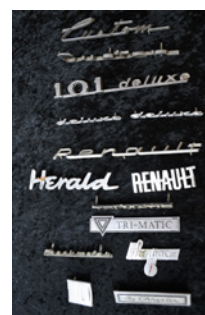
**209. MOBIL AND SHELL QUART OIL BOTTLES**

Oil bottles, Mobil Oil, One Imperial Quart with the gargoyle, The Vacuum Oil Co Pty Ltd, AGM C9 to base, minor marks, Very Good 9/10 plus Shell Motor Oil One Quart bottle, The Shell Company Of New Zealand Limited, AGM 12 to base, large rim edge chip, minor marks, Good 6.5/10 (2)



**204. FIREZONE OIL TIN**

117mm wide x 165mm tall x 75mm deep, Firezone Oil, Firezoned Gasoline Lubricated Gas, Upper lubrication & Accessories Ltd 58 Young Street Sydney, instructions for use and guarantees to sides and rear, minor paint loss, light surface rust, small scuffs and scratches, Very Good 7.5/10



**210. CHROME CAR NAME BADGES**

Car name badges, longest 210mm 2 x Custom, 101 Deluxe, 2 x Deluxe, 2 x Renault, Pontiac, Herald, 2 x Tri-Matic, Avenger, Beckmeter, By Chrysler, 10, light pitting, minor marks, minor light surface rust, Very Good 7.5/10 (15)



**205. TYRE WALL CLOCK**

350mm diameter, wall clock in the style of a wall clock, the hour and minute hands are in the form of a screwdriver and crescent, minor marks, a few light scratches on the face, Very Good 8.5/10



**211. AUSTRALIAN NUMBER PLATES**

Assorted Motor Car and Motorbike number plates from Australia, 370mm x 135mm, comprising of 3x Queensland, 3x NSW (New South Wales), 2x NT Outback Australia, 3x South Australia including one that's hard plastic, 5 x Victoria, 1 x WA, a pair from ACT Canberra The Capital Nation, plus 2 sizes of Motorbike plates, 218mm x 98mm, 1 x WA, 1x SA, plus 183mm x 96mm 1x NSW, 1 x TAS, 2 x VIC 2x QLD, minor paint loss, marks and scratches, minor surface rust, Very Good 7.5 10 (26)



**216. AUSTRALIAN NUMBER PLATES**

Assorted Motor Car and Motorbike number plates from Australia, 370mm x 135mm, comprising of 3 x Queensland, 4 x NSW (New South Wales), 1 x NT Outback Australia, 2 x South Australia, 5 x Victoria, 1 x TAS, 2 x comprising of a pair from WA, The Golden state, 3 x from ACT plus 2 sizes of Motorbike plates, 218mm x 98mm, 1 x WA, 1x TAS, plus 183mm x 96mm 2x NSW, 1 x QLD, 2 x VIC 1x NT, some have some minor paint loss, marks and scratches, minor surface rust, Very Good 7.5 10 (29)



**212. MOBIL OIL PEGASUS PLASTIC SIGN**

303mm x 365mm plastic sign showing the Pegasus Trade Mark of Mobil Oil, it has been cut off on right hand side, break to lower leg and secured with Blue Tack, small hole to top of lower leg, minor marks and scratches, Good 7.5/10



**217. BUS STOP ROAD SIGNS**

300mm x 450mm Enamel sign, double sided, Bus Stop Keep Clear, out edge chipping and paint loss around securing holes on one edge, minor marks Very Good 7.5/10 plus 325mm x 545mm Aluminium Bus Stop sign with securing brackets, minor marks, Very Good 8.5/10 (2)



**213. CHAMPION SPARK PLUGS PAINTED SIGN**

240mm x 650mm plastic sign on hardboard backing, in Red, Black, White, Champion with image of a Spark Plug, Commercial Signs Tauranga Limited, plastic is brittle, a piece missing to top centre, and both lower corners, cracks to sides, minor marks and wear, Good 6/10



**218. BUS STOP AND P5 ROAD SIGNS**

300mm x 450mm Enamel sign, double sided, Bus Stop Keep Clear, out edge minor chipping and paint loss to top and bottom on one side, minor marks, Very Good 8.5/10 plus 308mm x 542mm Aluminium P5 with directional arrow, with securing brackets, scratches, minor dints, wear, minor marks, Good 6.5/10 (2)



**214. ASSORTED SMALL TINS**

Assorted tins, back row, left to right, largest diameter 120mm, Waxshine, CRC Magnum Muffler Putty, 2x Rawleigh's Antiseptic Healing Salve, Bootine Genuine Dubbin, Front Row, 170mm x 90mm Renold Cycle chain, Oxford Mathematical Instruments, all have degrees of surface rust, light scratches and wear, Good 7/10 (7)



**219. CHROME FORD CAR NAME BADGES**

Chrome Ford car badges, longest 200mm, the blue background one is plastic, light pitting, minor marks, minor light surface rust, Very Good 7.5/10 (11)



**215. CASTROL QUART OIL BOTTLE**

Castrol, Property Of Castrol Limited to rear, 1 Quart, with plain plastic cap, minor marks and very light wear, Very Good 8/10



**220. USA NUMBER PLATES**

Assorted Motor Car number plates from The USA, 303mm x 155mm, 1x each from the following, Alaska, Colorado, District of Columbia, Georgia, Indiana, Iowa, Mississippi, Montana, S. Dak (South Dakota), Tenn (Tennessee), Utah, and one simply saying 1958, some have some minor paint loss, marks and scratches, minor surface rust, Very Good 7.5/10 (12)





**221. ASSORTED SMALL TINS AND TYRE GAUGE**

Assorted tins, left to right, 95mm tall Firestone Holdfast Repair Outfit with some contents, Cure-C-Cure Repair Pack, 115mm long Cycle Repair Kits, Reidrubber with some contents, Hinsdale, The Hermetic, Dunlop with some contents, Schrader Balloon Tyre Gauge, Schrader Vale Cores, all have degrees of surface rust, light scratches and wear, Good, 7/10 (8)



**226. VINTAGE TYRE REPAIR KITS**

Puncture repair kits, 110mm x 80mm Gold Star, 115mm cycle kits, John Bull, Bowes seal Fast, Cure-C-Cure by Romac, John Bull Junior, The Empire, Britannia, Romac, Hinsdale, John Bull, all have degrees of surface rust, light scratches and wear, Good, 7/10 (10)



**222. CASTROL PINT OIL BOTTLE**

Printed Castrol in Red and Green, 1 Pint, minor marks, Very Good 9/10



**227. SPEED LIMIT ROAD SIGNS**

605mm diameter road sign, 30 with the Limited Speed Zone logo to the other side, minor marks and light scratches, Very Good 8/10 plus 30 plain rear, damage to outside edge, paint loss, marks and wear, holes drilled to top portion, Fair 5/10 plus 50 damage to outside edge, paint loss, marks and wear, holes drilled to top portion, Fair 5/10 (3)



**223. BUS STOP ROAD SIGNS**

300mm x 450mm Enamel Sign, double sided, Bus Stop Keep Clear, with securing brackets on one edge, minor marks Very Good 8.5/10 plus 300mm x 450mm Enamel Sign, double sided, Bus Stop Keep Clear, with additional enamel sign Section added to top edge, minor marks, Very Good 8.5/10 (2)



**228. CHROME FORD CAR NAME BADGES**

Chrome Ford car badges, longest 323mm, two sets of individual letters, FORD, one set on cardboard backing, the blue background one is plastic, light pitting, minor marks, minor light surface rust, Very Good 7.5/10 (11)



**224. NO ENTRY ROAD SIGN**

605mm diameter single sided road sign, No Entry, some minor bending and dints, minor paint loss, scratches and wear, Very Good 7/10



**229. WAKEFIELD CASTROL PINT OIL BOTTLE**

Oil Bottle, Castrol Motor Oil, Property of C C Wakefield & Co to the rear, One Imperial Pint, AGM maker, Very Good 9/10



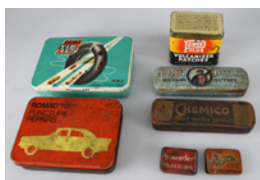
**225. SHELL PETROL BOWSER TOP GLOBE DOUBLE SIDED**

Double sided Shell Bowser top in the shape of Shell's globe, Light Blue with Black writing, Supershell to both sides, damage to the E, R and both L's to one side, small chip to lower rim edge, Very Good 7.5/10



**230. SHELL PETROL BOWSER TOP GLOBE DOUBLE SIDED**

Double sided repo fibreglass Shell Bowser top in the shape of Shell's globe, Shell in Red on a Yellow globe, Very Good 7/10



**231. VINTAGE TYRE REPAIR KITS**

Puncture repair kits, 110mm x 80mm Romac Puncture Repairs, 120mm x 80mm Rema Tip Top, 65mm wide 55mm high, Tower Plus Vulcanizer patches, 115mm cycle kits John Bull, Chemico, plus 40mm wide Schrader Valve cores, Lectra Valve Insides, all have degrees of surface rust, light scratches and wear, Good 6/10 (7)



**236. VINTAGE TYRE REPAIR KITS**

Puncture repair kits, 145mm x 75mm John Bull Sticky Cycle Patches, 115mm cycle kits, Hinsdale, Chemico, Moseley, John Bull, all have degrees of surface rust, scratches and wear, Good 6/10 (5)



**232. SPEED LIMIT ROAD SIGNS**

605mm diameter road sign, 30 with the Open Road Speed logo to the other side, minor marks and light scratches, Very Good 7.5/10 plus 50, plain rear, paint loss, scratches, marks and wear, Good 6/10 (2)



**237. HELLA AUTOMOTIVE ELECTRICAL TIN SIGN**

610mm x 915mm tin sign, Blue, Black on Yellow background, Hella Automotive Electrical Equipment and Accessories, with images of some products, scratches, minor paint loss, light surface rust, damage to upper right hand corner, Good 7/10



**233. STOP ROAD SIGNS**

785mm wide, single sided Stop sign with supporting bracket, reflectorized outer edge and lettering. marks, light wear and scratches, Very Good 7.5/10 plus 675mm wide Stop sign, no bracket, minor paint loss, scratches and wear, Very Good 7/10 (2)



**238. CHAMPION SPARK PLUGS PAINTED TIN SIGN**

608mm x 1200mm tin sign in Red, Black, White, Champion, with image of a Spark Plug, PS30 lower left hand corner, light scratches, minor marks, nailed onto wooden frame, Very Good 8/10



**234. SINCLAIR OPALINE MOTOR OIL PUMP**

405mm wide x 1030mm to top of pump x 240mm, Very Rare hand operated oil pump, 30 Gallon, Extra Service, Seal Pistons, Sinclair Opaline Motor Oil, LT Medium SAE No. 20, it has been repainted but has original decals, has original dip stick and pump in working order, minor marks, Very Good 8/10



**239. CHROME CAR NAME BADGES HOOD EMBLEMS**

Car badges hubcap cover, hood ornaments, longest 165mm wide, Chrome and Bakelite Bird Hood emblem, 3 x different Holden, the red one is plastic, crack to plastic front of centre one, 3 x hubcap covers, Centre Horn for Ford Zephyr, Brass Ford Hubcap, split to the rim, enamel Standard badge, damage to the enamel, light pitting, minor marks, minor light surface rust, Very Good 7.5/10 (10)



**235. EARLY SHELL PINT OIL BOTTLE**

x Early c1920's Shell Oil Bottle, Shell Logo to one side, Property Of The Shell Coy Of New Zealand Ltd, One Imperial pint to the other, Weights and Measures mark, AGM to base, rim edge chips and bruises, Very Good 7.5/10



**240. SPARK PLUG PACKETS**

Longest 95mm, Assorted Cardboard Spark Plug Packets, Auto-lite, NGK, Lodge, no contents, some ends missing, small rips and marks, Good 7/10 (42)



**241. ASSORTED VINTAGE MOTORING ITEMS**

Tallest 210mm, Genuine Lockheed Brake Fluid, dints to lower left hand side plus Whiz Shock Absorber Fluid plus The Liquid Tool EEZIT plus Genuine Lockheed Hydraulic Brake Fluid, all have light surface rust, marks and light scratches, Good 7/10 (5)



**246. VEEDOL MOTOR OIL LIDDED CAN**

340mm tall x 305mm wide Oil Can, Veedol Motor Oil, Tide Water Associated Oil Company New York, 100% Pennsylvania, Light Medium SAE 20, with handle, lid and cap (rusty), minor dints to base edge, surface rust, light wear and marks, Good 6.5/10



**242. EARLY SHELL QUART OIL BOTTLE**

Early c1920's Shell Oil Bottle, Shell Logo to both sides, Property Of The Shell Coy Of New Zealand Ltd, One Imperial Quart to the other, AGM to base, minor marks, Very Good 8.5/10



**247. SHELL PETROL BOWSER TIN SIGN**

330mm x 330mm tin sign, Shell, scratches, minor marks, Very Good 7.5/10



**243. CHAMPION SPARK PLUGS PAINTED TIN SIGN**

458mm x 915mm tin sign in Red, Black, White, Champion, with image of a Spark Plug, PS10 lower left hand corner, paint loss around nail holes, light scratches, minor marks, Good 7/10



**248. ATLANTIC DIESEL BOWSER TIN SIGN**

305mm x 287mm tin sign, Orange and Teal, for a petrol bowser, has the Atlantic A, Diesel, minor marks, light scratches, Very Good 8.5/10



**244. LUCAS BATTERIES FLANGE TIN SIGN**

430mm x 335mm double sided flanged tin sign, Lucas Batteries for power, stamina & dependability on both sides, one side has minor marks, light surface rust and light scratches, the other is dull, surface rust, marks and scratches, Good 6/10



**249. WAKEFIELD CASTROL OIL TIN**

250 mm x 155 mm x 320mm high, Petrol Tin marked Wakefield Castrol Motor Oil to both sides, Two Impl Gall Tin to top, original brass cap, with additional pourer and funnel, remains of original labels to both sides, unable to read them, minor paint loss, light wear and scratches, Very Good 8/10



**245. CARBIDE BRASS BIKE LAMP**

165mm to top of stand tall Brass Carbide Bike Lamp, on a grey painted stand, Panther P&H B'Ham to top, black bracket has been touched up, minor marks and dints, Very Good 8.5/10



**250. CHROME CAR NAME HOOD EMBLEMS**

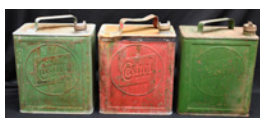
Car hood ornaments, 5 x Holden, marked Holden underneath, plus one unknown, light pitting, minor marks, minor light surface rust, Very Good 7.5/10 (6)



**251. CARBIDE BRASS BIKE LAMP**  
195mm tall to top of stand, Brass Carbide Bike Lamp, on a grey painted stand, Miller British made with Lighthouse Trade Mark to top, black bracket has been repainted, minor marks and dints, Very Good 8.5/10



**256. OIL BOTTLE CAPS & STRAPS**  
Caltex, V/S, Shell x-100 10 W/30, Europa Lube bottle caps plus Mobiloil A SAE 30, SAE 20W-50, SAE -30 & SAE -40 neck straps, some light wear/rust, Very Good 7/10 (8)



**252. CASTROL PETROL TINS**  
250 mm x 150 mm x 320mm high, 2 x Petrol Tins marked Castrol Motor Oil to both sides, Contents 2 Imp Gallons, one Green, one Red, plus one Green the same but missing Motor Oil, all with brass caps, all have paint loss, surface rust, wear and scratches, Good 7/10 (3)



**257. ATLANTIC REGULAR BOWSER TIN SIGN**  
305mm x 287mm tin sign, Orange, White on a Teal background, for a petrol bowser, has the Atlantic A, Regular, minor paint loss, light scratches, Very Good 8.5/10



**253. ATLANTIC KEROSENE BOWSER TIN SIGN**  
305mm x 287mm tin sign, Orange and Teal on White background, for a bowser, has the Atlantic A, Kerosene, minor marks to right hand side, light scratches, Very Good 8/10



**258. EUROPA BOWSER TIN SIGN**  
250mm x 274mm tin sign for a petrol Bowser, in Red, a simple cut out E for Europa, light scratches, minor paint loss, Very Good 7.5/10



**254. ASSORTED AUTOMOTIVE TINS**  
Largest 265mm tall, Europa 5 Litres Europa Oil (NZ) Limited Wellington, light surface rust, light wear and scratches Good 7/10 plus Europa Multi Purpose Grease, 500g, Europa Oil (NZ) Limited Wellington, small dint to base, light surface rust, light wear and scratches Good 7.5/10 plus Early Shell tin with the logo to the lid, light surface rust, light wear and scratches Good 7/10 plus Shell specialised Lubricants Compound 3, light surface rust, light wear and scratches Good 7.5/10 (4)



**259. MOTORING RELATED SUNDRIES**  
Assorted car badges, hubcap nuts, hood emblems, includes Ford, British Anglia, Triumph, light pitting, minor marks, minor light surface rust, wear, Good 7/10 (35)



**255. POWELL AND HANMER MOTORCYCLE LAMP AND GENERATOR**  
195mm tall to top of stand, Motor Cycle Lamp and Generator, on a grey painted stand, Powell & Hanmer B'ham to top of generator, has been restored but not tested, and repainted, minor marks and dints, Very Good 8.5/10



**260. ROTAX CAR TAIL LIGHT**  
240mm tall, Car Tail Light, c1912, Rotax Motor Co, London, No. 303 Made In England, brass name badge to front, with red glass, has been restored and repainted, no wick, minor marks and dints, Very Good 8.5/10



**261. ACE MOTORING PRODUCTS**

Tallest 188mm, left to right in plastic containers, Chrome and Stainless Steel Cleaner, Polish and Cleaner, Cardboard with tin top, Super Fine French Chalk, Tin Tube Repair Outfit, Cold Patching, Tube Repair Outfit, Cutting Compound No. 2, Tyre Sidewall paint, White, all light surface rust, minor paint loss, light wear and scratches, Good 7/10 (7)



**265. LUCAS KING OF THE ROAD CAR LAMP**

353mm tall Side Car lamp, brass, Lucas King of the road copper name plate to side, has been restored but not tested, minor paint loss to black painted base, minor marks and dints, Very Good 8.5/10



**262. CASTROL MOTOR OIL AND GARGOYLE GREASE TINS**

Wakefield Castrol Motor Oil 1 Imp Quart tin, 216mm tall, light surface rust, marks and scratches, Good 7/10 plus 112mm tall Gargoyle Grease tin, Contents 1Lb, Vacuum Oil Coy (NZ) Ltd, minor paint loss and marks, light surface rust, Very Good 8/10 (2)



**266. ACE MOTORING PRODUCTS**

Tallest 222mm, left to right in tin Radiator Cleaner and Flush, Glitter Wax Car Polish, plastic Polish and Cleaner, Extra Heavy Duty Brake Fluid, cardboard with tin top, Superfine French Chalk, Road Bitumen and Tar Remover, Cutting Compound No. 2, light surface rust, minor paint loss, light wear and scratches, Good 6.5/10 (7)



**263. EUROPA BOWSER TIN SIGN**

250mm x 274mm tin sign for a petrol Bowser, in Red, a simple cut out E for Europa, light scratches, minor paint loss, Very Good 7.5/10

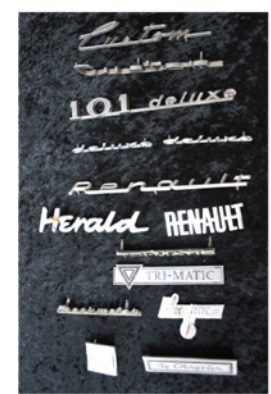


**264. NO STOPPING ROAD SIGNS**

455mm x 305mm Road Signs, No Stopping Day or Night, stick on letters, O of Or coming off, fading to outer red band, minor marks, scratches, Very Good 7/10 plus No Stopping at any time, except vehicles queuing for parking building, paint loss, scratches especially top and bottom, Good 7/10 (2)







**KIWI AUCTIONS LTD**

106B Harpers Road, RD 2, Kaiapoi 7692, New Zealand

Telephone (NZ only) 0800 782 584

Telephone: (intl) + 64 27 270 7410

Web [www.kiwiauctions.co.nz](http://www.kiwiauctions.co.nz)

Email: [info@kiwiauctions.co.nz](mailto:info@kiwiauctions.co.nz)